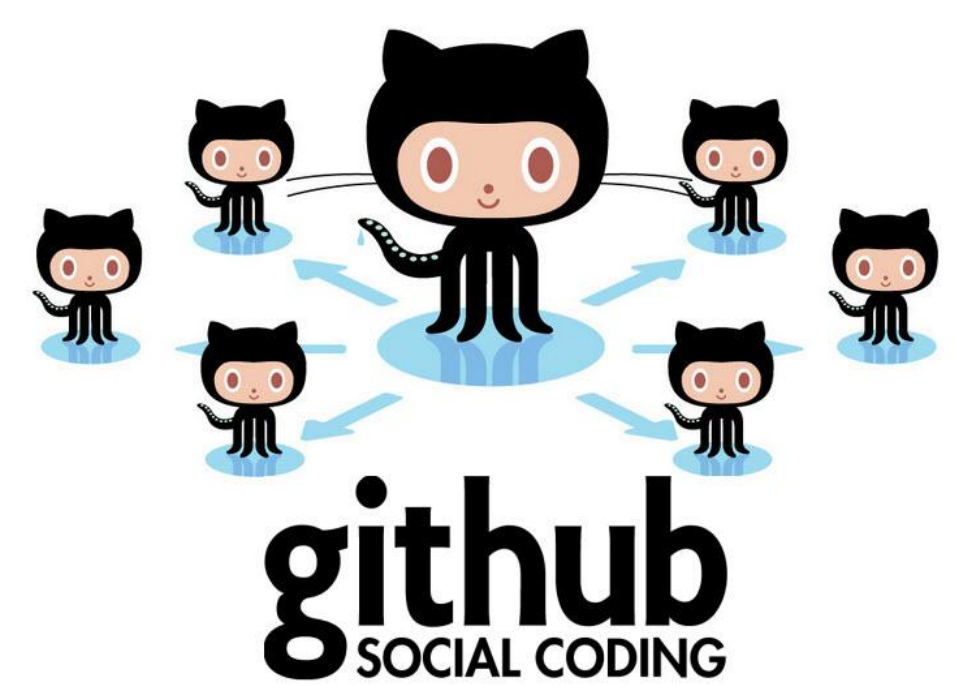


A **successful open source project** builds a **vibrant community** through clearly communicated best practices used in combination with open source tools

An open source platform is the **central location** where the project is managed.

It is where you **interact with the community**, submit changes etc.



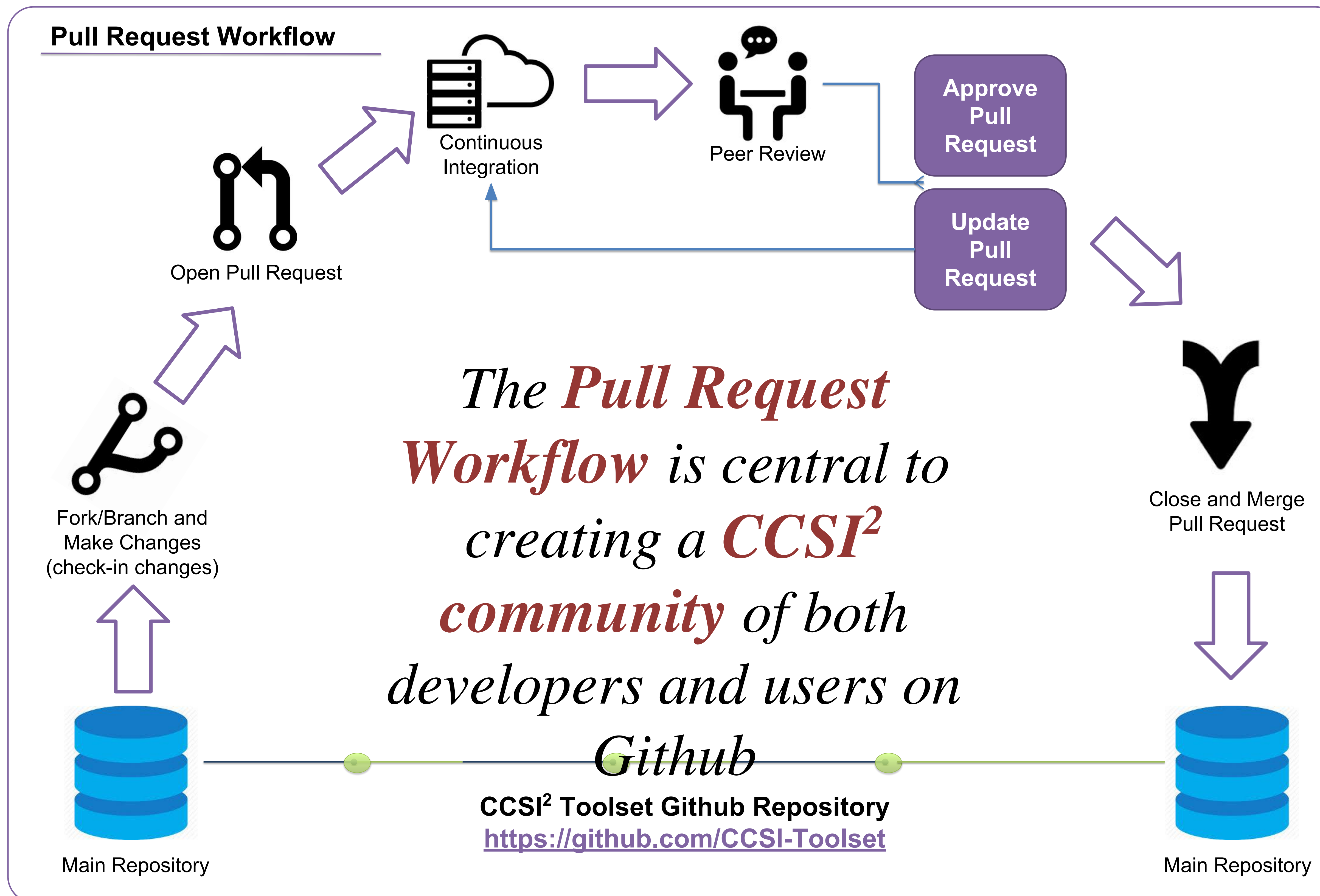
CCSI<sup>2</sup> Toolset is **now fully available** as open source.

- Github **open source platform** for version control, issue tracking, user management & engagement

- Cloud-based testing platforms** such as Circle CI will be integrated with Github



Contact:  
Keith Beattie, LBNL, [ksbeattie@lbl.gov](mailto:ksbeattie@lbl.gov)  
Val Hendrix, LBNL, [vchendrix@lbl.gov](mailto:vchendrix@lbl.gov)



**Open Source** means ..

People are free to run, examine, modify and optionally contribute because internals are publicly available

Facilitates the exchange of ideas, collaboration, broad usage and community-oriented development.

Users must accept the terms of the open source license

**Four main components** to building a vibrant CCSI<sup>2</sup> open source community

- Active development** that happens in the CCSI Github repositories
- CCSI<sup>2</sup> Product Repository **owners/maintainers**
  - Review/Approve code changes
  - Manage Issues
- Clearly communicate **best practices** for contributions
- Documentation, Testing and User Support

**CCSI<sup>2</sup> Open Source Goal** -- Make sure organizations who are using CCSI products have access and can **continue product development** going forward.