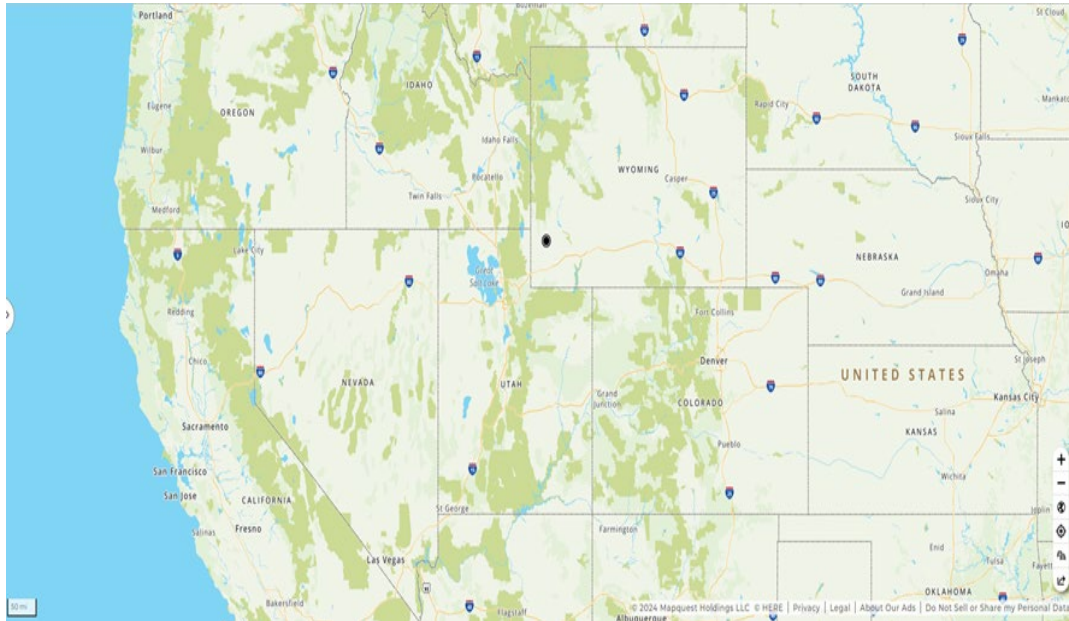




EnergyComm
CONSULTING

Sharon Fain, CEcD
Principal, EnergyComm Consulting

Kemmerer, WY & TerraPower



Navigating Transition

- Justification for Coal Plant Closure and Announcement Timeline
- Assessing Economic, Workforce, and Community Impacts of Closure
- Developing Community Strategy to Alleviate Closure Effects
- Site Selection for TerraPower's Sodium Nuclear Reactor Pilot Project
- Continuous Communications: Project Benefits, Job Creation, Safety and Fuel Storage

Opportunities





Wyoming Takes Initiative

- Private Sector Addresses Grant Writing Resource Gaps in Wyoming
- Grant Writing Workshops Sponsored by Governor and Congressional Delegation
- State Establishes IWG and Launches Grant Assistance Program
- Kemmerer Secures EDA funding for Redevelopment and Revitalization
- Higher Education Identifies New Opportunities & Programs

Navigating Transition

- Justification for Coal Plant Closure and Announced Timeline
- Assessing Economic, Workforce, and Community Impacts of Closure
- Developing Community Plans to Alleviate Closure Effects
- Selection Process for TerraPower's Sodium Nuclear Reactor Pilot Site
- Sustained Communication on Project Benefits, Job Creation, Safety and Fuel Management

Strategic Overview

- Site Selection, Announcement, and Communication Strategy for Project
- Essential Community and Stakeholder Engagement Initiatives
- Commitment to Transparent and Ongoing Communication
- Importance of Federal Permitting Process & Approval Timelines

Key Insights for Strategic Project Advancement

- Preparation, Partnerships & Persistence
- Prioritizing Community and Stakeholder Engagement
- Sustained Commitment to Transparent Communication
- Navigating Federal Permitting Requirements & Approval Timelines

Concluding Insights

- Gain comprehensive understanding of the benefits and impacts new energy projects will bring to the community
- Identify and engage the right individuals to build and sustain relationships with energy partners
- Establish ongoing communication with energy partners AND leverage federal and state resources to support a smooth transition



EnergyComm

CONSULTING

Sharon Fain, CEcD

sfain@energycommconsulting.com