

Geological Characterization of the OASIS Project Area, Southern Appalachians, Alabama

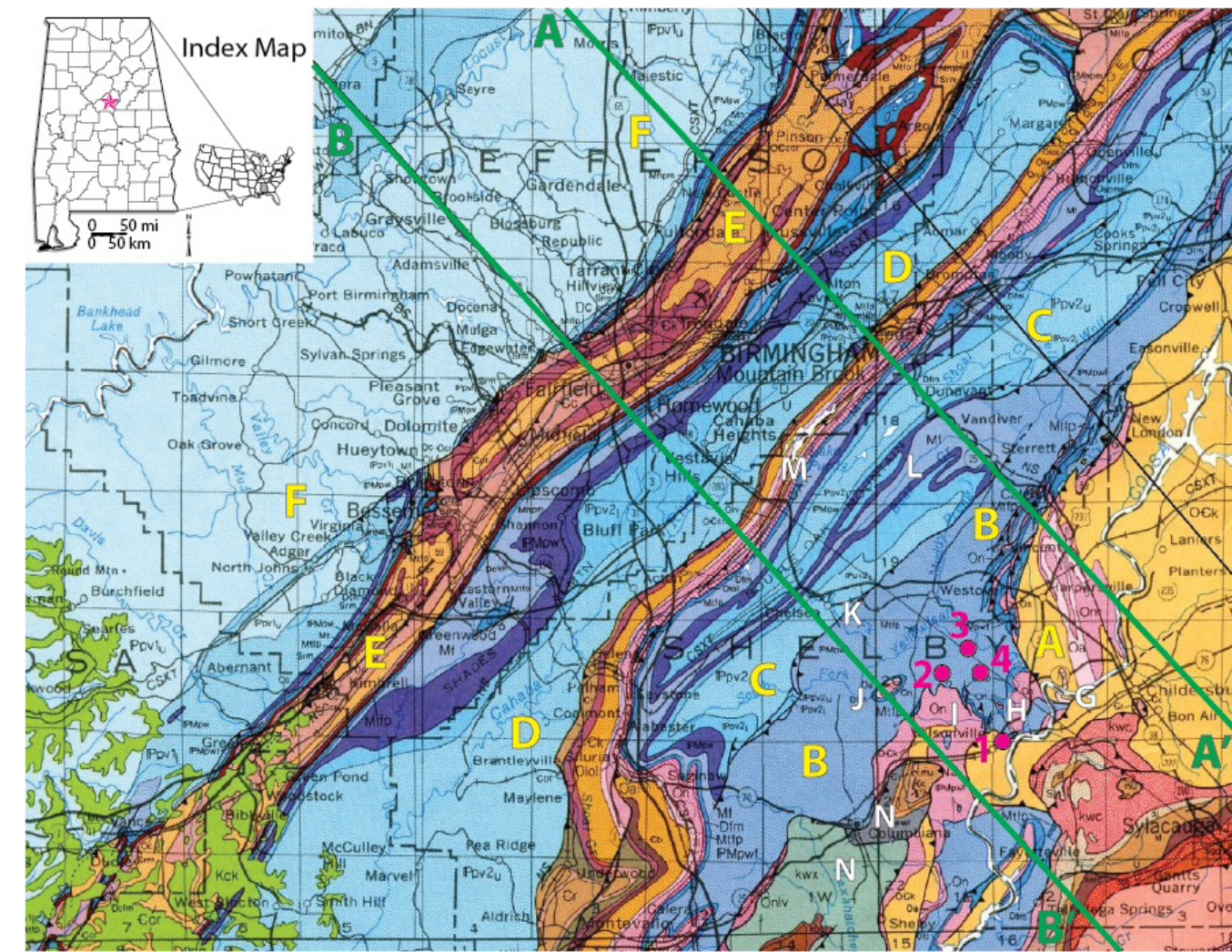


Jack C. Pashin, Boone Pickens School of Geology, Oklahoma State University, Stillwater, OK 74078

DE-FE00332267

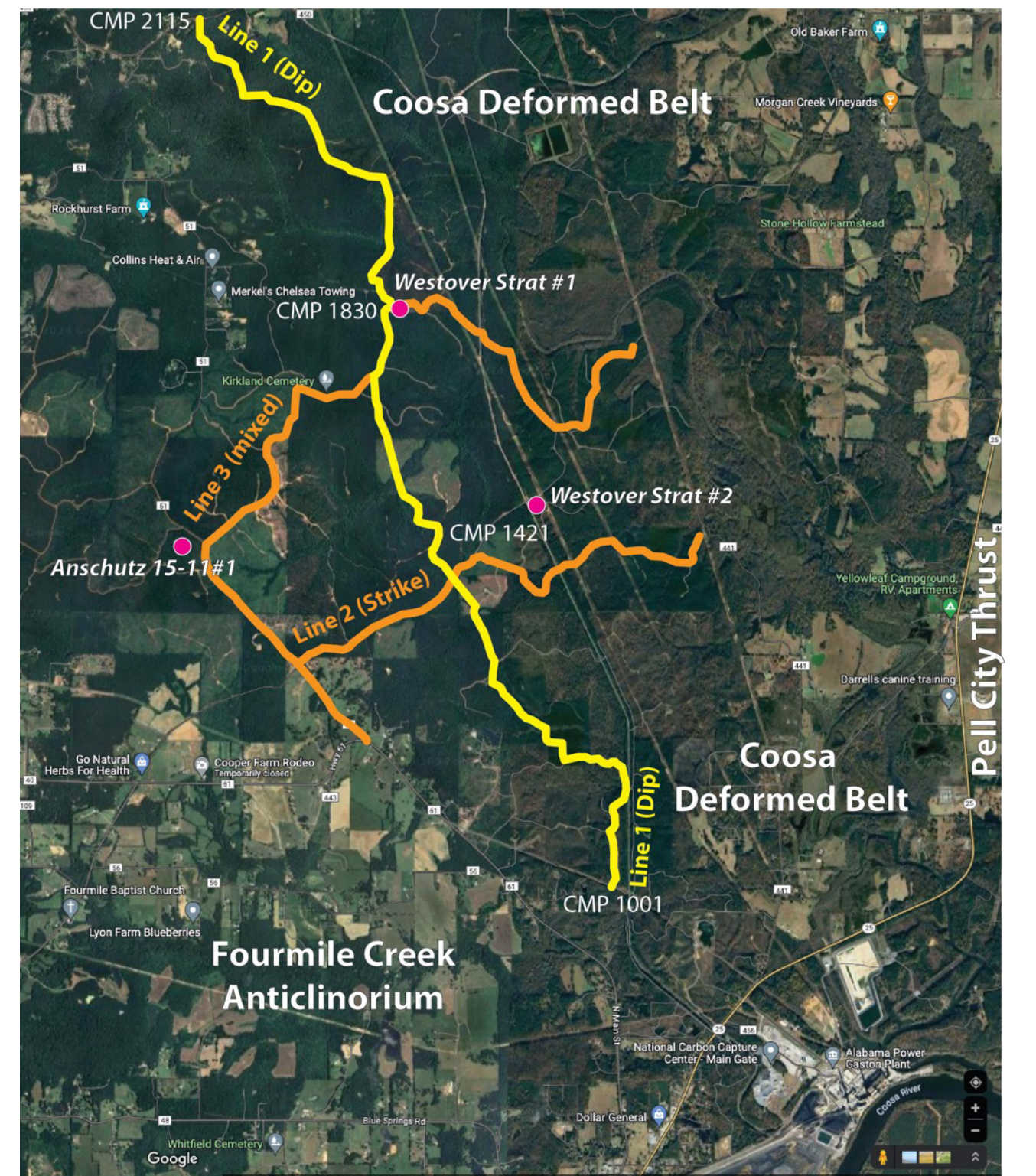
This material is based upon work supported by the U.S. Department of Energy National Energy Technology Laboratory. Cost share and research support are provided by the Project Partners and an Advisory Committee.

Geologic Map

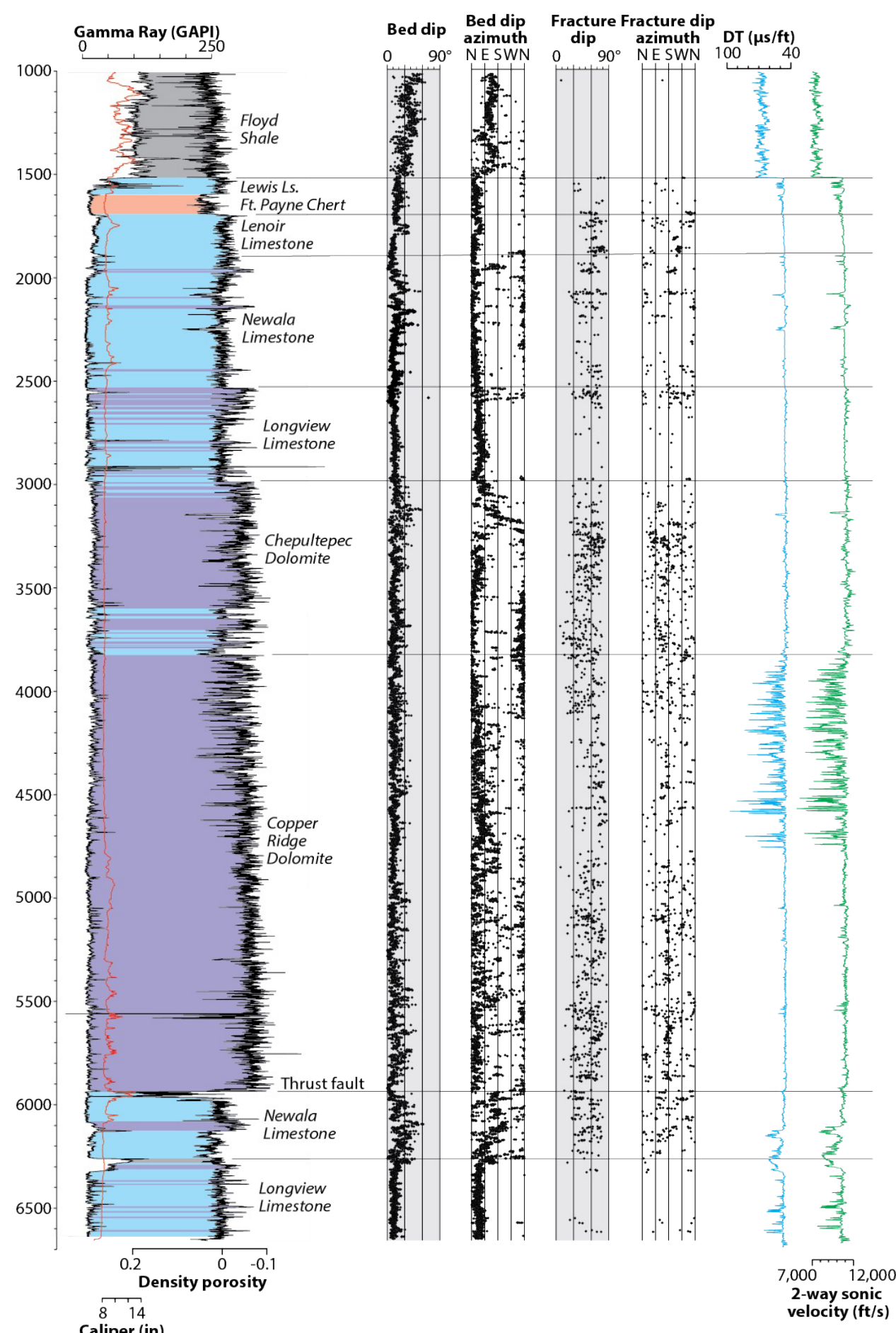


- 1 - National Carbon Capture Center
- 2 - Anschutz 15-11 #1 well
- 3 - Westover Strat #1 well
- 4 - Westover Strat #2 well
- A - Pell City Thrust Sheet
- B - Coosa Deformed Belt
- C - Coosa Synclinorium
- D - Cahaba Synclinorium
- E - Birmingham Anticlinorium
- F - Black Warrior Basin
- G - Wilsonville Thrust
- H - Steam Plant Anticline
- I - Fourmile Creek Anticlinorium
- J - Page Spring Anticline
- K - Yellowleaf Thrust
- L - Vandiver Anticline
- M - Helena Thrust
- N - Talladega Belt

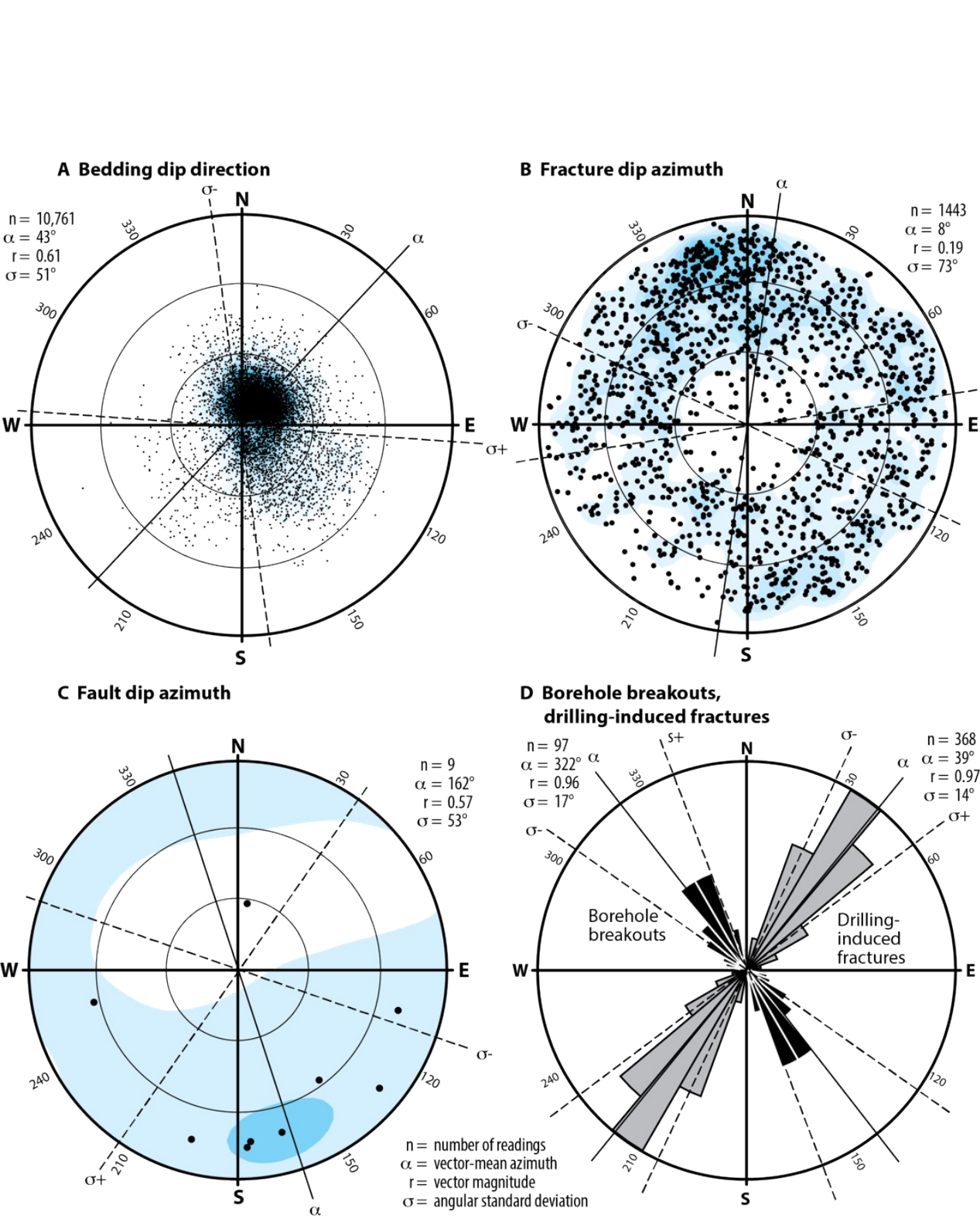
Seismic survey



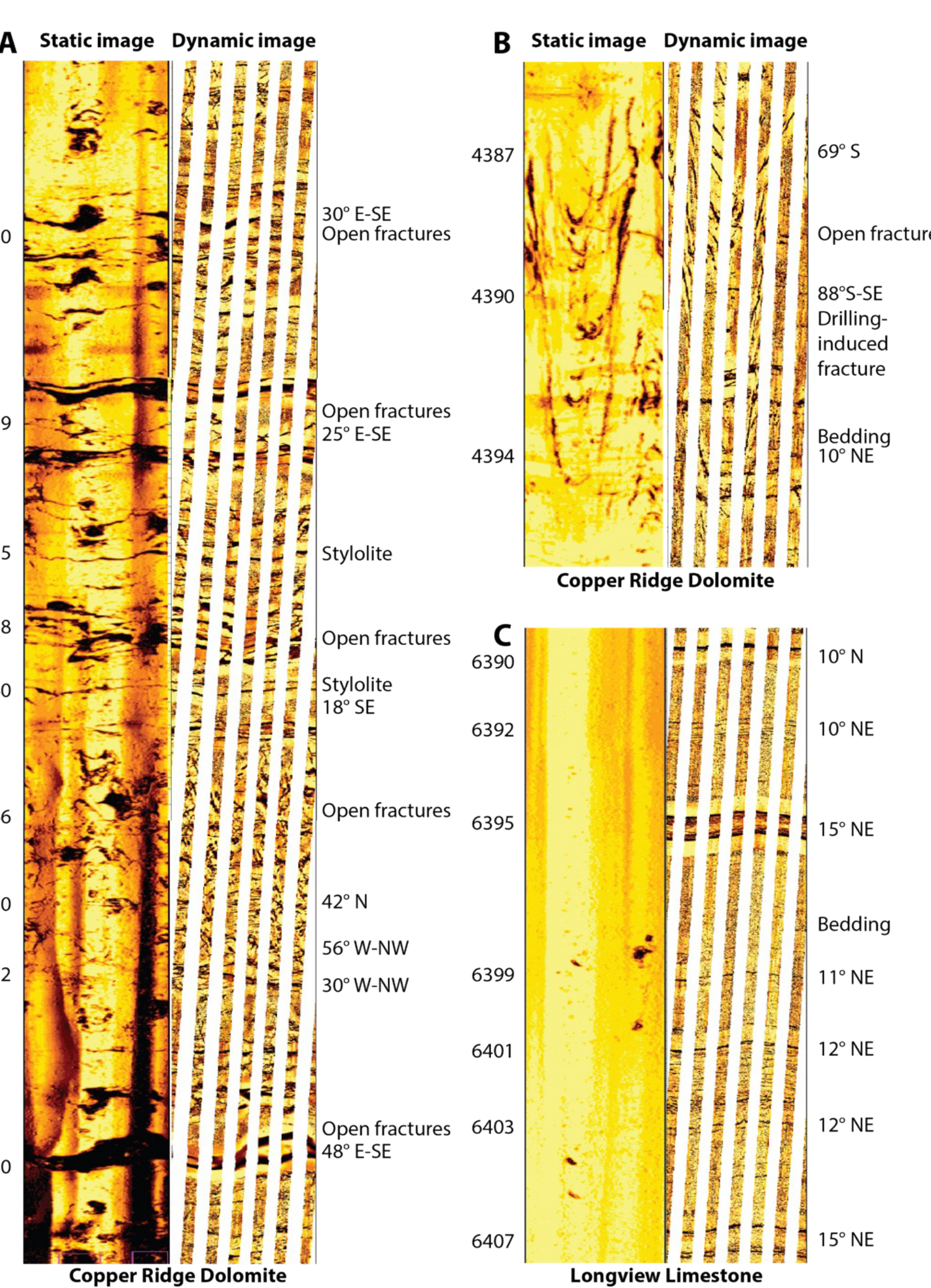
Geophysical logs Westover Strat #2



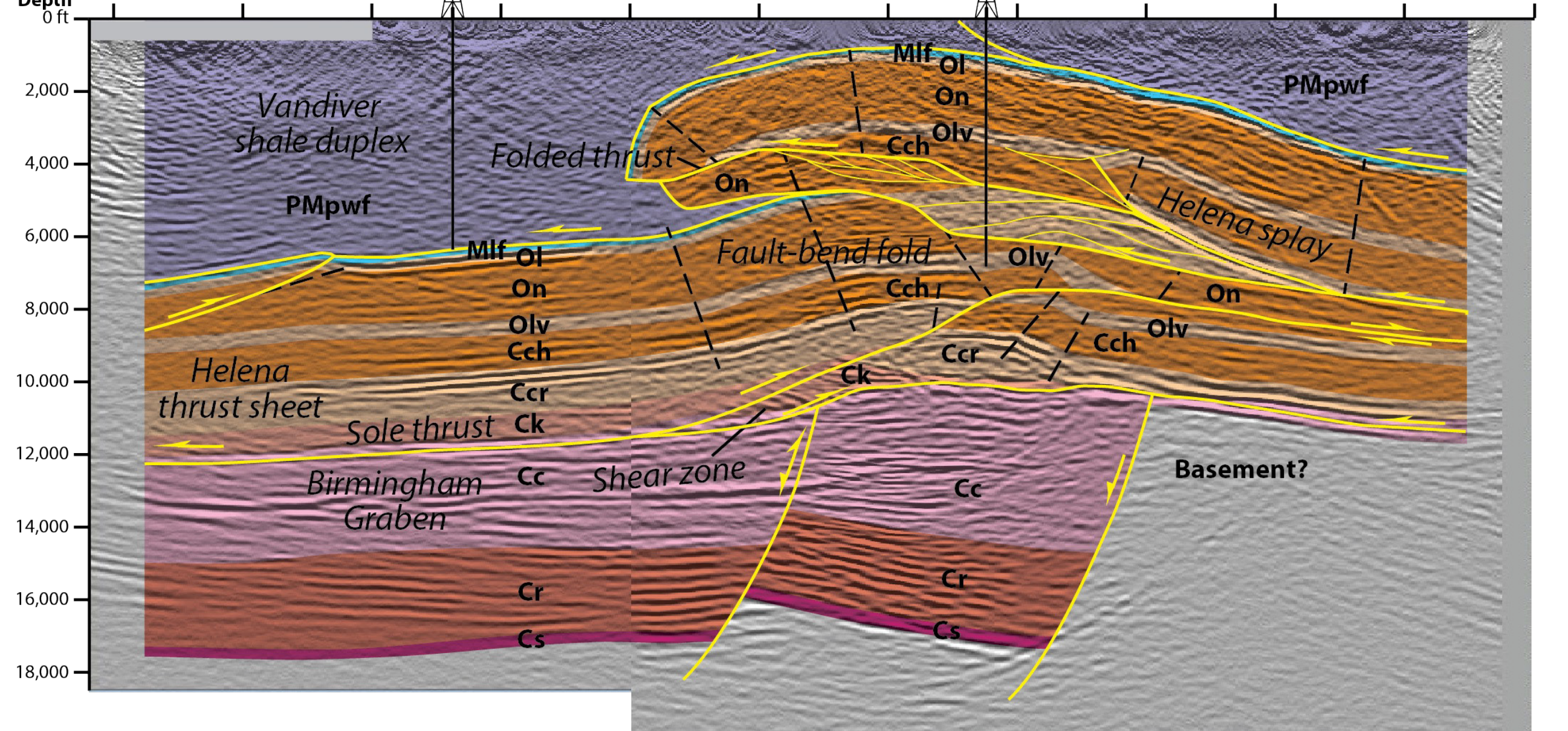
Structural analysis



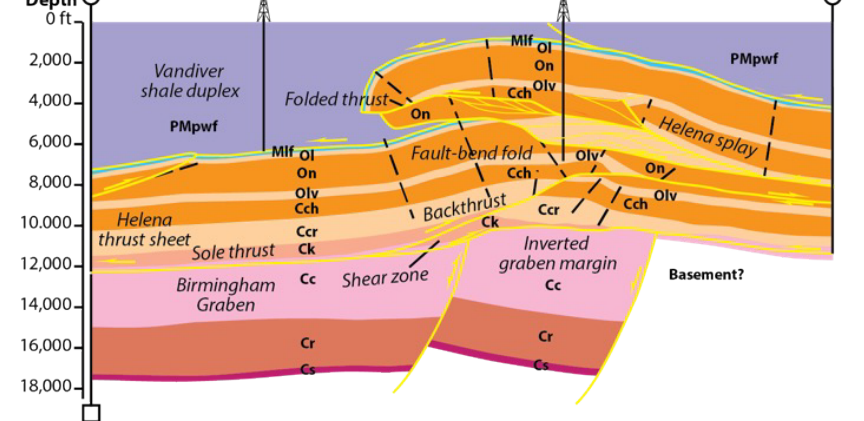
FMI images



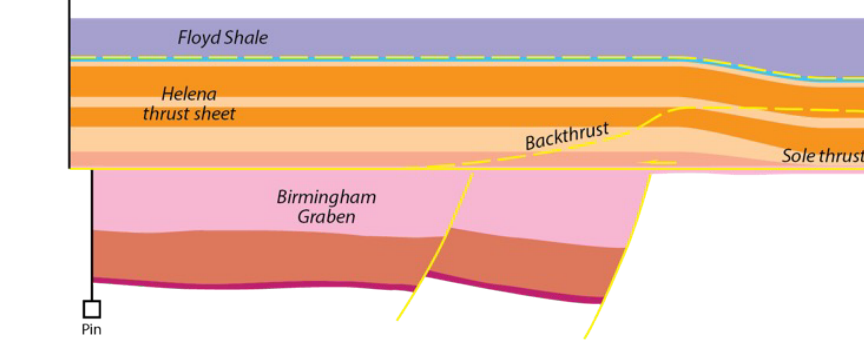
Seismic profile



~303 Ma Graben inversion, triangle zone formation



310 Ma Decollement tectonics



Structural model