

# Trail of the Chiefs

Presented by Tracey Ziev, Carbon Solutions LLC  
2024 FECM/NETL Carbon Management Conference  
DE-FOA-0002730



# Acknowledgement & Disclaimer

Acknowledgment: "This material is based upon work supported by the Department of Energy under Award Number DEFE0032511."

Disclaimer: "This report was prepared as an account of work sponsored by an agency of the United States Government. Neither the United States Government nor any agency thereof, nor any of their employees, makes any warranty, express or implied, or assumes any legal liability or responsibility for the accuracy, completeness, or usefulness of any information, apparatus, product, or process disclosed, or represents that its use would not infringe privately owned rights. Reference herein to any specific commercial product, process, or service by trade name, trademark, manufacturer, or otherwise does not necessarily constitute or imply its endorsement, recommendation, or favoring by the United States Government or any agency thereof. The views and opinions of authors expressed herein do not necessarily state or reflect those of the United States Government or any agency thereof."

# Project Overview

**Objective:** The Trail of the Chiefs project will drive region-wide decarbonization across **Montana, North Dakota, and Wyoming.**

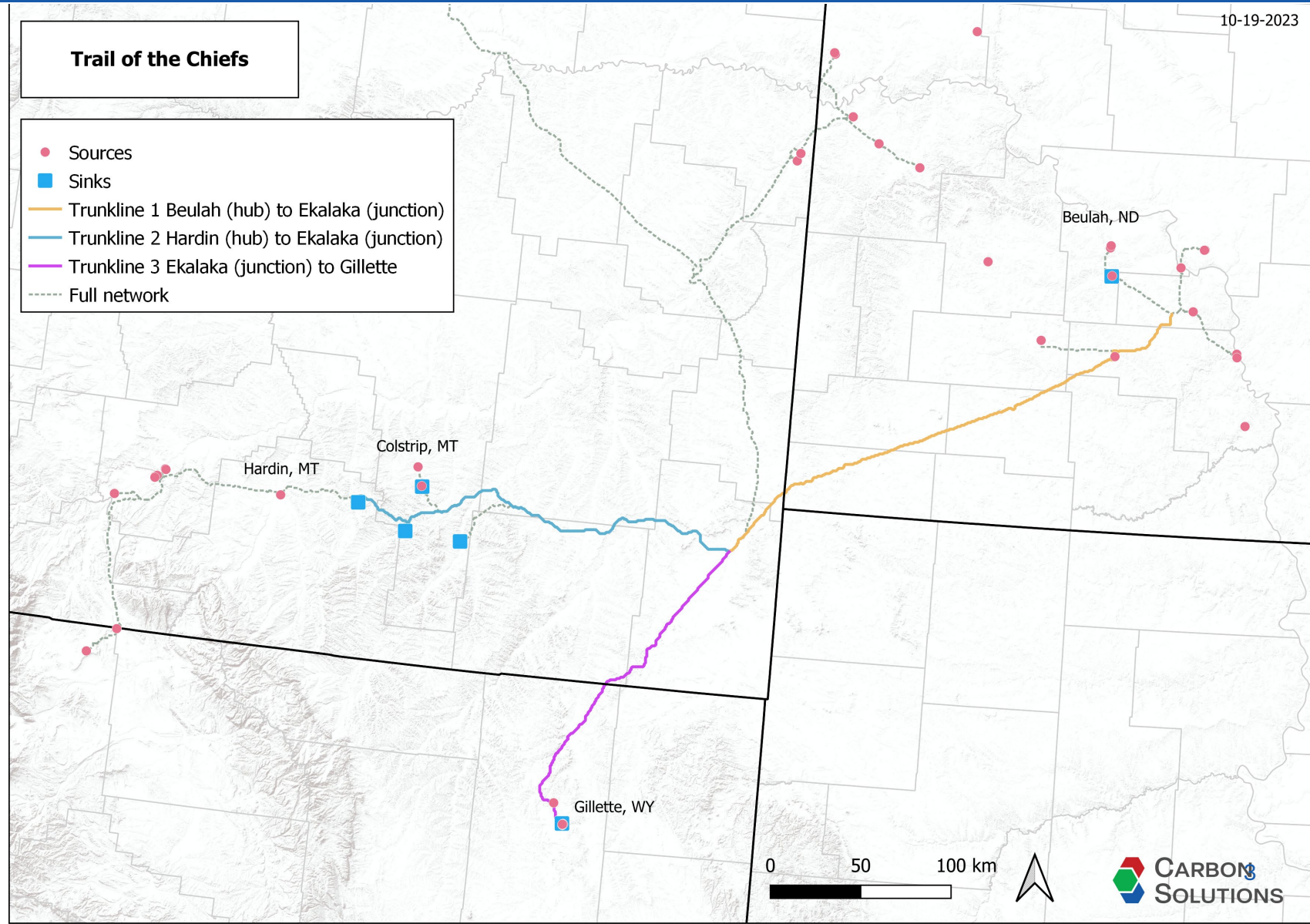
The project is specifically designed to unite and coordinate tribal energy opportunities across these states. The project will develop a FEED study for **488 miles** of open-access CO<sub>2</sub> pipeline trunklines transporting up to **38 MtCO<sub>2</sub>/yr.**

**Performance Dates:** TBD

**Funding:** Total: \$4,000,000

DOE - \$3,000,000

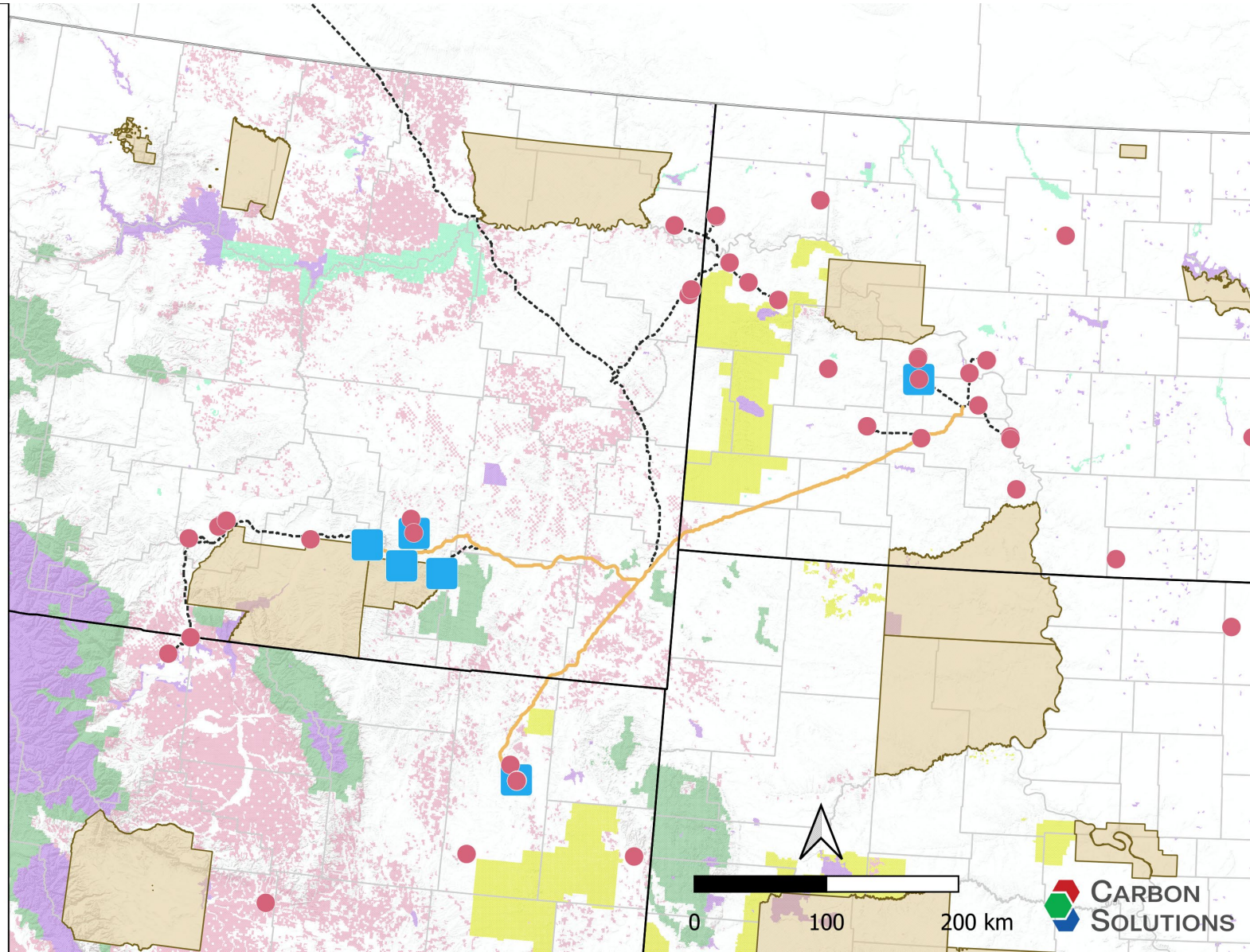
Cost share - \$1,000,000





# Project Background

- **Tribal Focus**
  - Project idea developed by two 100% owned by tribal companies and members: Kanata America and CarbonEx.
  - 2 of 3 project team members tribal or tribal member owned
  - Designed to connect tribal energy resources
- **Carbon Management Optionality**
  - Connects existing and potential future carbon management projects



# Project Scope & Schedule

	2024						2025						2026											
	3 <sup>rd</sup> Quarter			4 <sup>th</sup> Quarter			1 <sup>st</sup> Quarter			2 <sup>nd</sup> Quarter			3 <sup>rd</sup> Quarter			4 <sup>th</sup> Quarter			1 <sup>st</sup> Quarter			2 <sup>nd</sup> Quarter		
	J	A	S	O	N	D	J	F	M	A	M	J	J	A	S	O	N	D	J	F	M	J	A	A
<b>Task 1.0 - Project Management</b>																								
1.1 Project Management Plan			X																					
1.2 Data Management Plan			X																					
<b>Task 2.0 - Engineering Design</b>																								
2.2 Engineering Design Package																								
2.3 Project Cost Estimate																								
<b>Task 3.0 Regulatory Plan</b>																								
3.1 Prepare Regulatory Plan			X						X													X		
<b>Task 4.0 - Community Benefits Plan</b>																								
4.1 Community & Labor Engagement									X													X		
4.2 Investing in Job Quality and a Skilled Workforce			X																			X		
4.3 Diversity, Equity, Inclusion, and Accessibility			X						X													X		
4.4 Justice40 Initiative									X													X		
<b>Task 5.0 - Business Case</b>																								
5.1 Business Case Analysis																								
5.3 Market Analysis																								
<b>Task 6.0 - Environmental Safety &amp; Health</b>																								
6.0 Environmental Safety & Health Analysis			X																X					

# Project Success Criteria

- **Final pipeline route** that minimizes project execution risks including land access, natural hazards, and impacted communities.
- **FEED study** for the pipeline with costs, materials, and logistics to satisfy capital-raising requirements and begin pipeline construction at the earliest possible date.
- **Regulatory Plan** that develops material to submit regulatory documents to the State and Federal governments at the earliest possible date after project completion.
- **Outreach and engagement plan** that develops trust/social license with impacted communities and stakeholders, and highlights the social, economic, and environmental opportunities and challenges of the pipeline.
- **Business case** that supports business development including attracting near- and long-term capital investors—for the first-stage pipeline and the greater Trail of the Chiefs—as well as support/buy-in from the State governments.
- **ES&H Plan** that addresses all major environmental safety and health issues for the project, including addressing NEPA requirements, hazardous materials, and emergency preparedness.
- **CO<sub>2</sub> source commitments**, potentially including offtake agreements, that commit to up to 38 MtCO<sub>2</sub>/yr of supply.
- **CO<sub>2</sub> sink commitment** letters that commit to storing all CO<sub>2</sub> provided by source commitment and beyond (i.e., up to 38 MtCO<sub>2</sub>/yr).

# Community Benefits Scope

## Community Engagement

- Create a regional stakeholder map.
- Complete at least four engagement activities.

## Investing in Quality Jobs

- Identify partners for workforce development opportunities associated with CCUS and develop an engagement and communication strategy.
- Conduct at least two engagement activities related to workforce development
- Develop recommendations on apprenticeship programs, competitive wage rates, construction health and safety requirements, and worksite training to ensure that future project phases will have quality jobs and ensure a skilled workforce.



# Community Benefits Scope

## **Diversity, Equity, Inclusion, and Accessibility**

- Create a list of diverse subcontractors and vendors and recommendations for expanding supplier diversity.
- Develop hiring goals for local and underrepresented worker in future project phases and recommendations to increase those workers.

## **Justice 40**

- Create a web-based map integrating regulatory, safety, environmental, and stakeholder engagement feedback (data) for pipeline routing.
- Create publicly accessible potential benefits and risk analysis tool.
- Create Community Needs Assessments for each Tribe and State.
- Initiate and plan for development of a CCUS/Energy Business Incubator.
- Develop an equity and ownership models for Tribal and Disadvantaged Communities.



# Questions?