

# Solid State Energy Conversion Alliance Core Technology Program

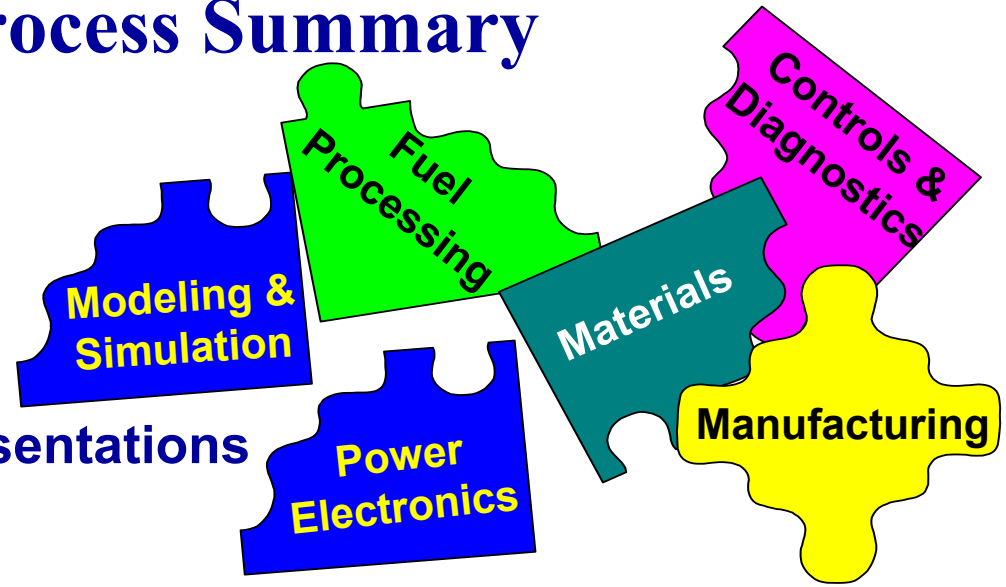


**June 18-19, 2002  
Workshop  
Peer Review Rating  
Results Summary**





# Review Process Summary



- **Core Technology Project Presentations**
  - Project Objectives & Results
  - Non-proprietary Information
  - Industry, National Lab & University Participation
- **Verbal & Written Constructive Comments**
  - Written Comments on Peer Review Forms
  - Industry Verbal Feedback at Workshop
- **Core Participant Review & Reply to Comments**
  - Reply to Comment Issues
- **DOE NETL Redirect Projects as Needed**





# Peer Review Questions

## Science & Technology Issues

1. How relevant are the technical issues being addressed in this project?

## Objectives & Approach

2.a. If the objectives are fully met, how significant will be the results of this project?

2.b. How effective is the approach in addressing the technical issues of this project?

## Results

3.a. How well do the results/progress relate to the project objectives?

3.b. How important are the results of this work in the advancement of the Core Technology area?

## Applicability

4. How beneficial are the results of this work in the development efforts of the Industry Teams?





# Peer Review Rating Scale & Definitions

■ Not at All   ■ Marginal   ■ Significant   ■ Superior   ■ Outstanding

**Not at all** – is viewed to be inferior in quality and amount, possibly duplication of existing work

**Marginal** – provides/likely to provide little useful knowledge or technology advancement

**Significant** – has/will have an influential impact on the core science and technology

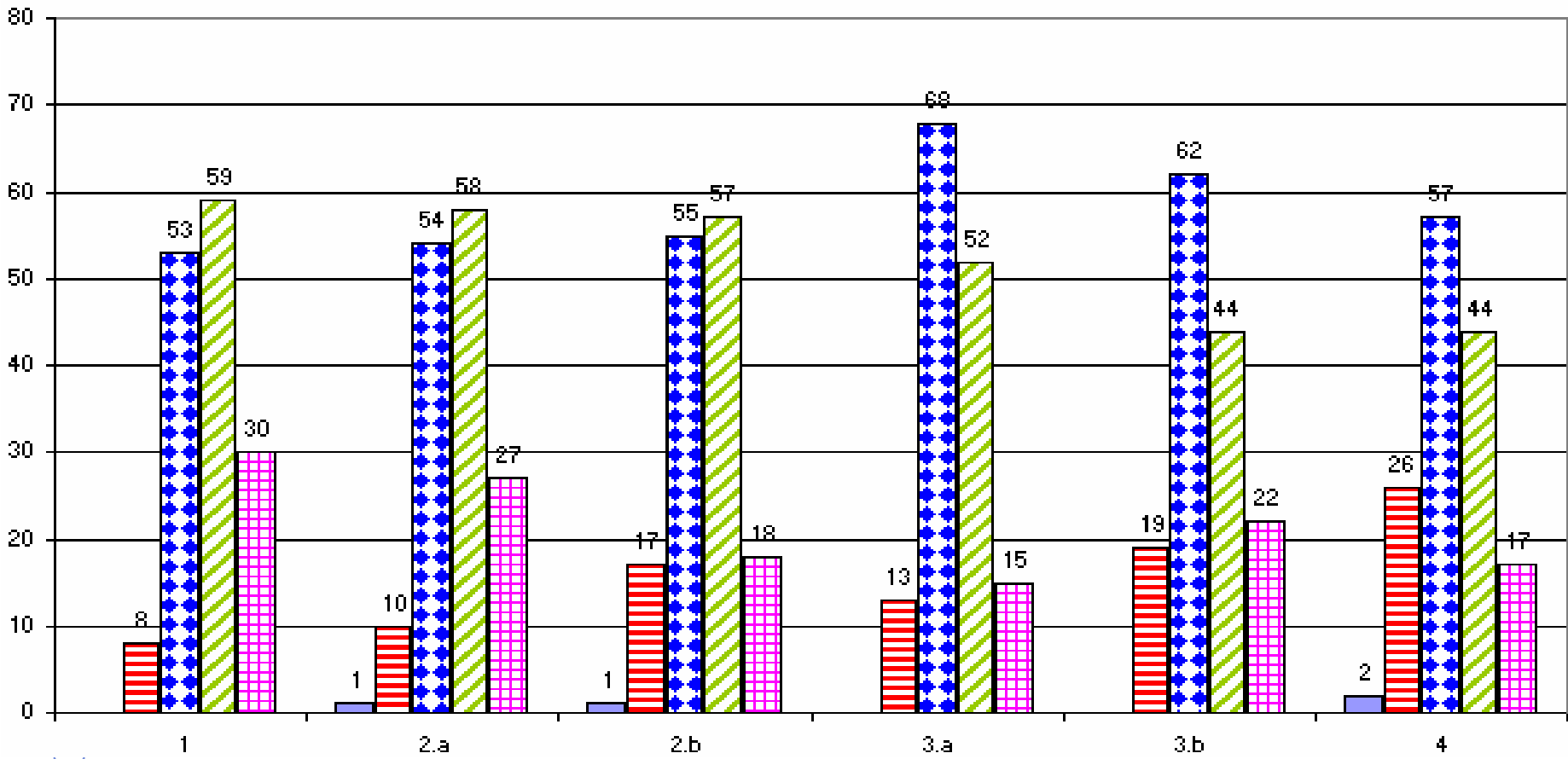
**Superior** – is considerable in quantity, quality of advancement of core science and technology

**Outstanding** – marked by eminence and distinction in advancing the state-of-the-art and/or knowledge in the fields of science and engineering





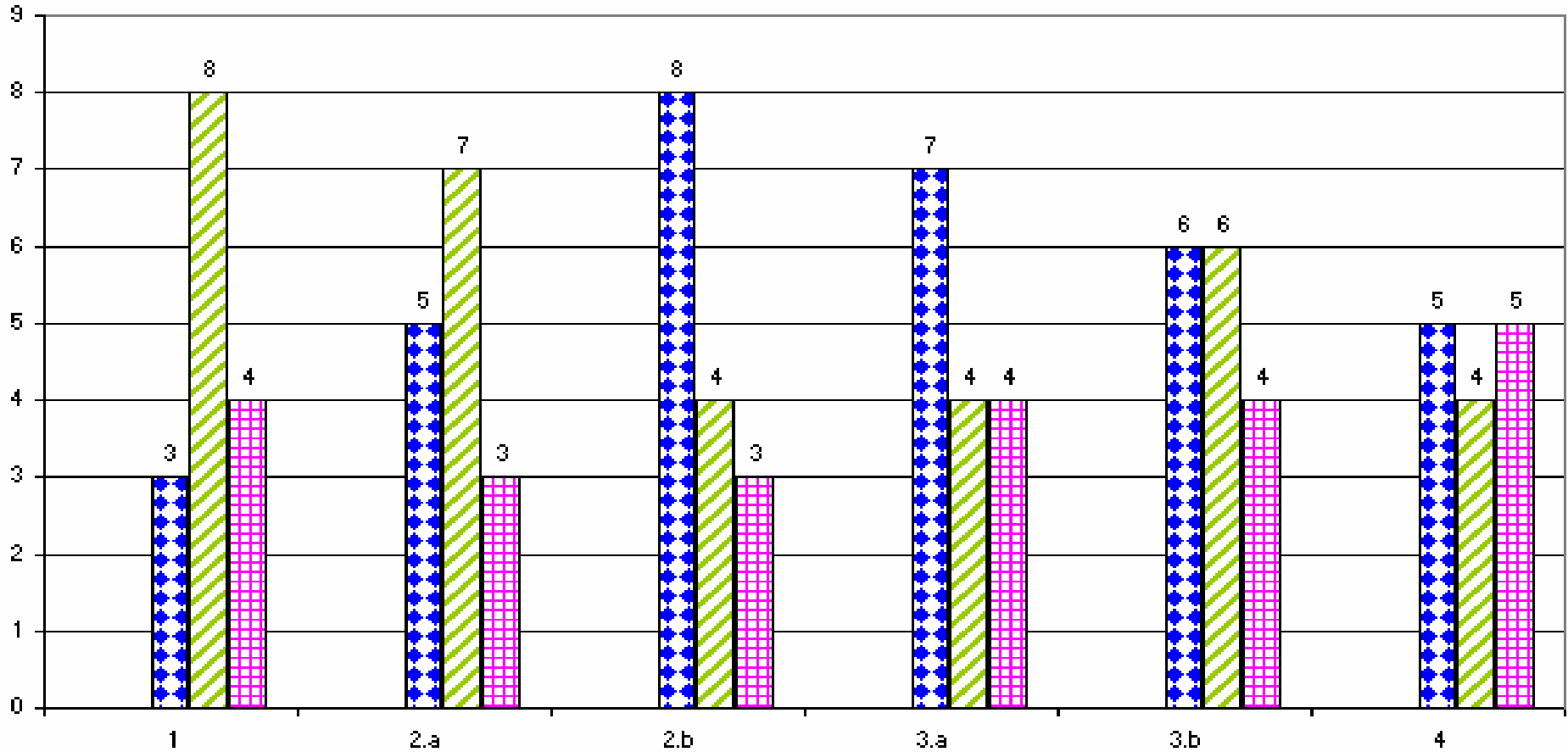
# Materials & Manufacturing





# Fuel Processing

Legend: Not at All (Blue), Marginal (Red), Significant (Blue with stars), Superior (Green with diagonal lines), Outstanding (Pink with grid)





# Modeling & Simulation

Not at All   Marginal   Significant   Superior   Outstanding

