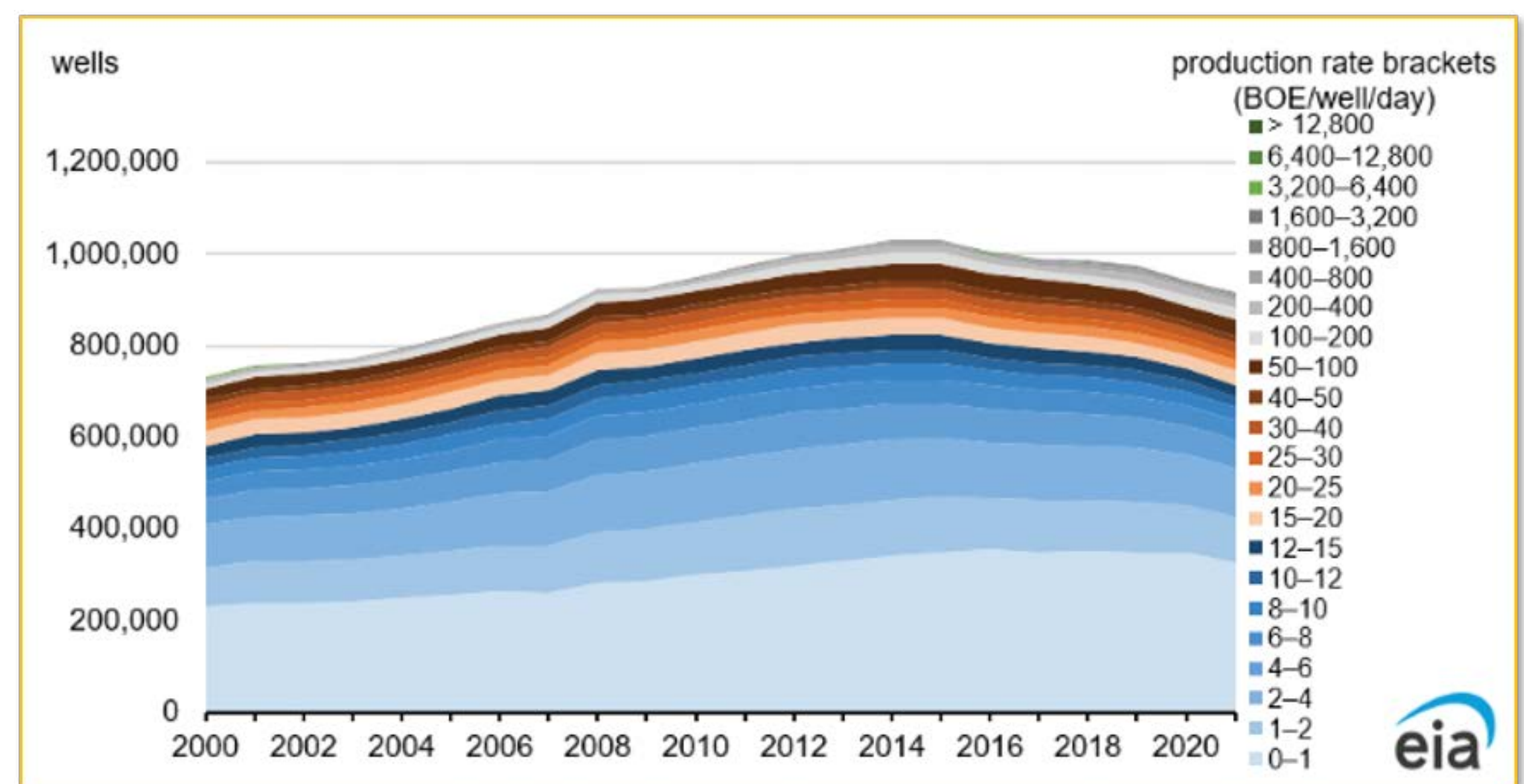
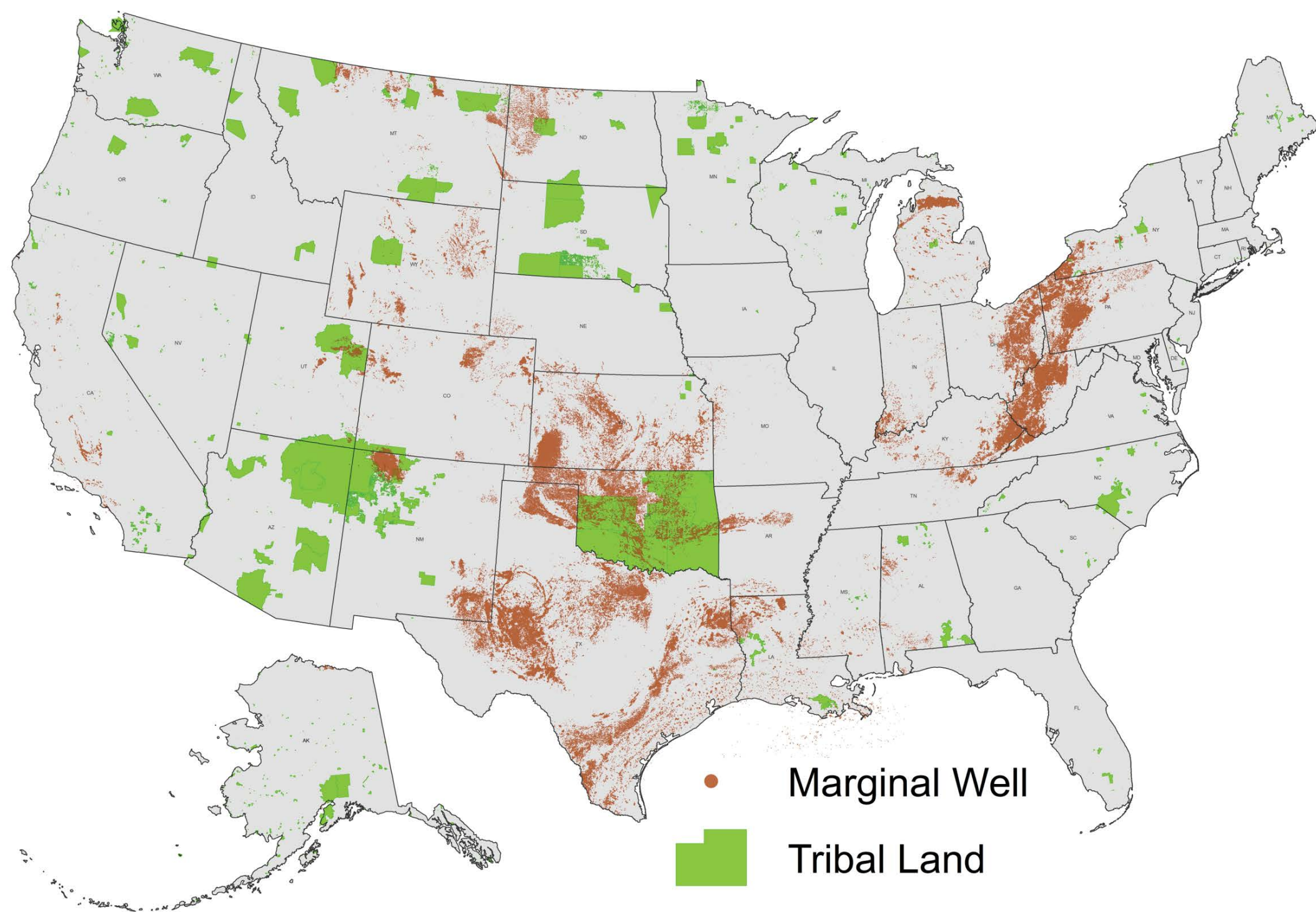


# NETL Leverages Cross-Functional Team for Implementation and Management of Methane Emissions Reduction Program

NETL's Technology Development Center (TDC) is the premier organization to support work-for-others programs and initiatives within DOE and other agencies.



SMALL OPERATORS		
CATEGORY	Production Brackets	
Oil Production Max (BBLs/day)	15	40
NG Production Max (MCFD)	90	240
Well Count	578,906	601,362
Oil Production (BBLs/day)	392,064	623,297
Natural Gas Production (MCFD)	3,239,866	5,395,109

SMALL OPERATORS ON TRIBAL LANDS		
CATEGORY	Production Brackets	
Oil Production Max (BBLs/day)	15	40
NG Production Max (MCFD)	90	240
Well Count	36,899	49,079
Oil Production (BBLs/day)	60,749	82,499
Natural Gas Production (MCFD)	49,528	766,270

Location of marginal conventional wells (MCWs) on public and tribal lands (top left), well production data for MCWs (top right), small operator well count and production data on public (bottom left) and tribal lands (bottom right).

TDC's decades of project management experience allows NETL to leverage crosscutting capabilities throughout NETL and FECM's Methane Mitigation Technologies Program to meet the administration's priorities on climate change, methane emissions reduction, and support for disadvantaged communities through both Research & Innovation Center (RIC) technical assistance and TDC management of financial assistance awards.

## Realized Benefits:

- NETL-RIC developed MCW methane measurement guidelines to optimize well plugging and abandonment operations.
- "First of its kind" open-source prioritization and mitigation optimization decision-support framework.
- Advanced modeling and analysis through NETL's National Methane Emissions Reduction Initiative.
- Compendium of monitoring and mitigation technologies and vendors to support state-based grant organizations.



NETL Methane Emissions Reduction Program Wins Outstanding Large Team Gold Award from Pittsburgh's Federal Executive Board

## NETL PARTNERS

