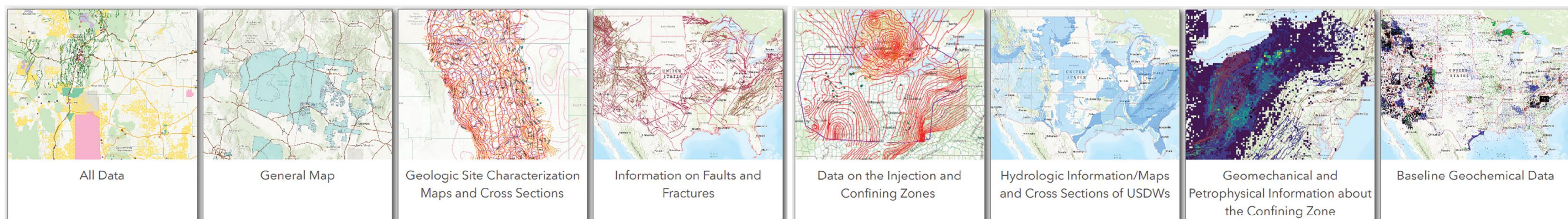
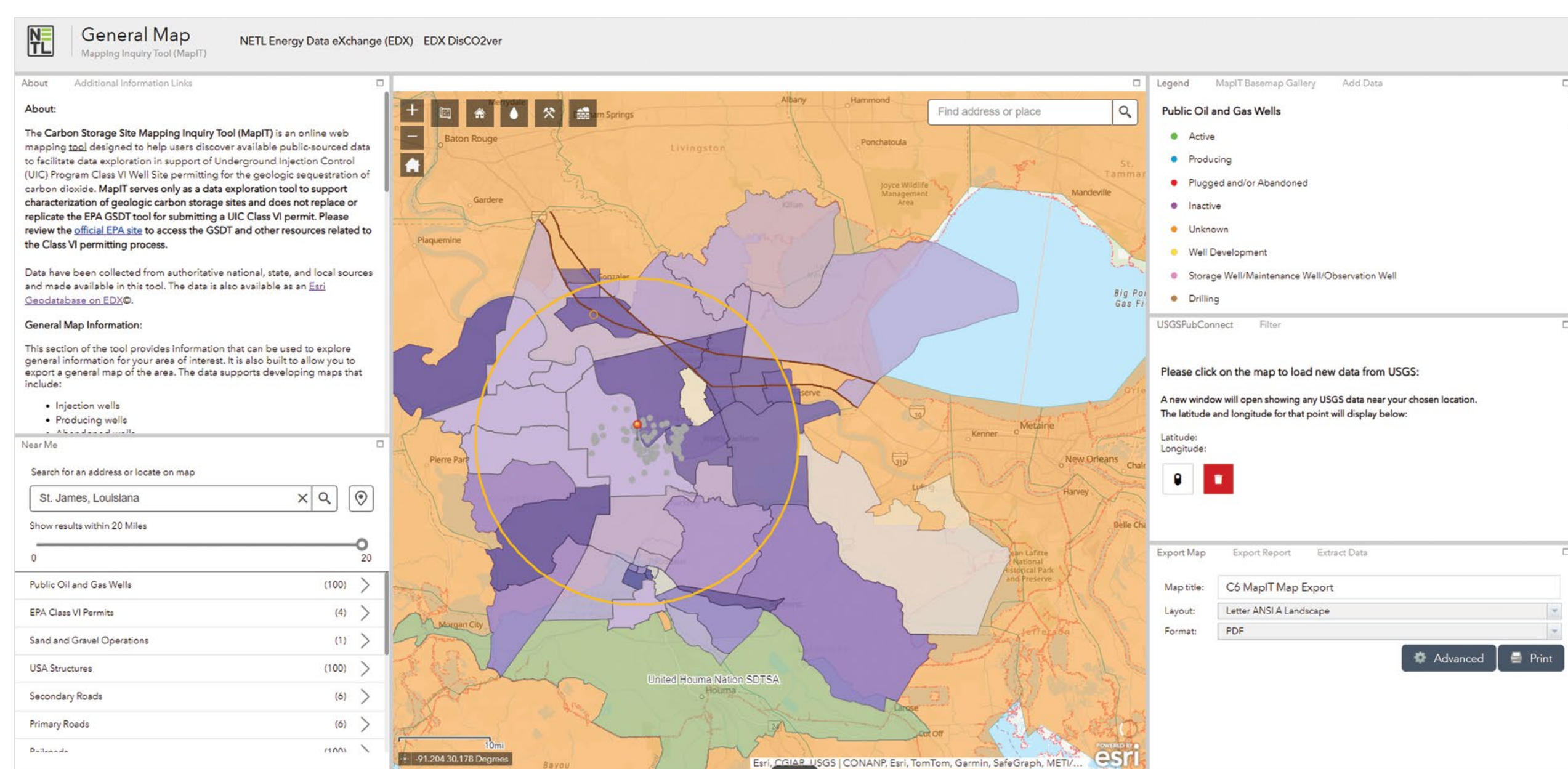
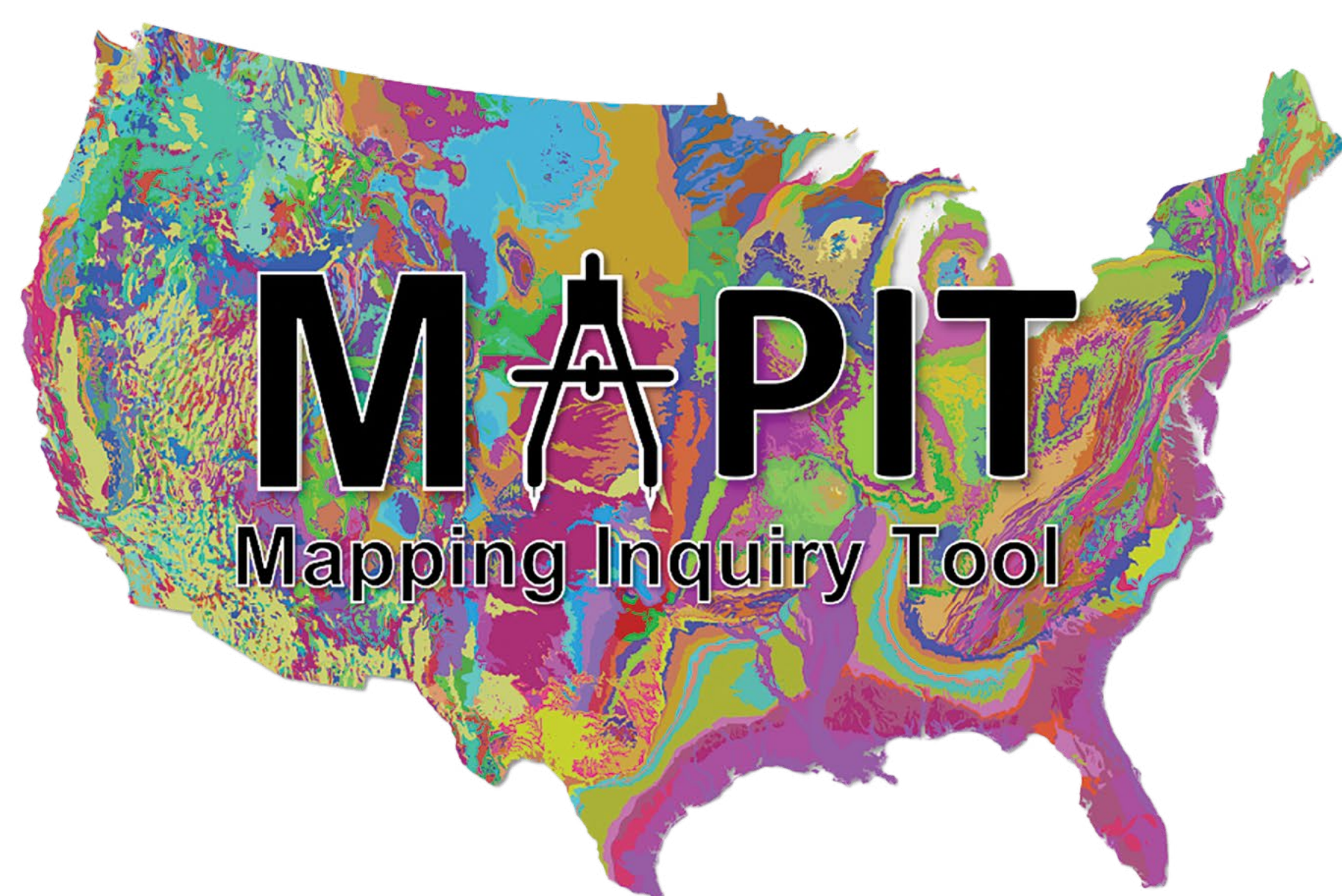


# MapIT Focuses Public Data on Potential Geologic CO<sub>2</sub> Storage Sites

*The Mapping Inquiry Tool and accompanying Data Support Tool Geodatabase provide access to datasets for the entire United States used in preparing applications for Class VI injection permits.*



Visualize, query and interact with collections of carbon storage data specific to an area of interest.

The MapIT tool and database are publicly available and hosted on the Energy Data eXchange (EDX) – NETL’s virtual data collaboration and curation platform for data-driven technology development.

- Compiles publicly available data across the USA from resources such as the U.S. Geologic Survey, state geologic surveys, EPA and the U.S. DOE Carbon Storage Program.
- Visualizes subsurface, surface, regional and local data from the prospective CO<sub>2</sub> reservoir to the surface including geologic, geophysical, hydrologic and contextual data.
- Allows users to query, explore and download spatial data across the United States using geographic information systems (GIS) products (Esri, QGIS).
- Serves as a foundational data tool to help drive future AI-optimized carbon storage deployment.

The MapIT database has been downloaded 240+ times to date; 22 of those downloads stated the intended use was to support the development of a Class VI permit application.

DOE PROGRAM

**Carbon Transport and Storage**

NETL PARTNER

