

SPATIO-TEMPORAL TOOLS AND GEOSTATISTICAL APPROACHES

FOR ENGINEERED-NATURAL SYSTEMS RISK REDUCTION

*Supporting Environmental Risk Reduction and Mitigating
Geologic Uncertainty for Carbon Storage*

BACKGROUND

As new technologies are developed and we explore more remote and extreme environments for energy resources, we are working diligently to ensure safe development and production of those resources. To support risk reduction efforts, spatio-temporal tools and geostatistical approaches can be utilized to detect data trends, reduce geologic uncertainty, identify knowledge gaps, and evaluate environmental risks for systems such as geologic carbon storage and conventional and unconventional hydrocarbons.

NETL has created and continues to further develop spatio-temporal and geostatistical tools and approaches in support of DOE's mission to produce science-based evaluations of engineered and natural systems to ensure sustainable, environmentally responsible access to domestic resources. These tools and approaches include Subsurface Trend Analysis, Cumulative Spatial Impact Layers, Spatially Weighted Impact Model, Spatially Integrated Multivariate Probability Assessment tool, and the Variable Grid Method. Used together or separately, these powerful, data-driven tools and approaches can be applied to various regions and at multiple scales to support risk assessment, risk prevention, and a range of scientific analytical or regulatory decision-making needs. While originally developed in association with projects spanning multiple NETL portfolios, many of these approaches are flexible and adaptable for a wider range of uses and needs.

NETL

NATIONAL ENERGY TECHNOLOGY LABORATORY

DESCRIPTIONS

SUBSURFACE DATABOOK

All tools, models, and methods require a foundation of solid data in order to output meaningful results. The Subsurface Databook (Databook) is a compilation of geologic and subsurface information and data developed as a result of NETL's research efforts to support reducing subsurface uncertainty about domestic regions of interest. The original databook was started by NETL's Geo-Analysis & Monitoring team for the U.S. Gulf of Mexico (GOM).

Each region that has a Databook, provides information ranging from general overviews of a basin's geology to point data, maps, and interpretations of specific formation parameters. The Geo-Analysis & Monitoring team maintains and augments the Databooks for NETL's research needs. NETL's Energy Data eXchange (EDX) team is working to build a "wiki-style" platform to house future versions of the Databook tool. The Databook tool will be a resource for NETL researchers to search, and add to, preserving information, knowledge, and data for future research needs.

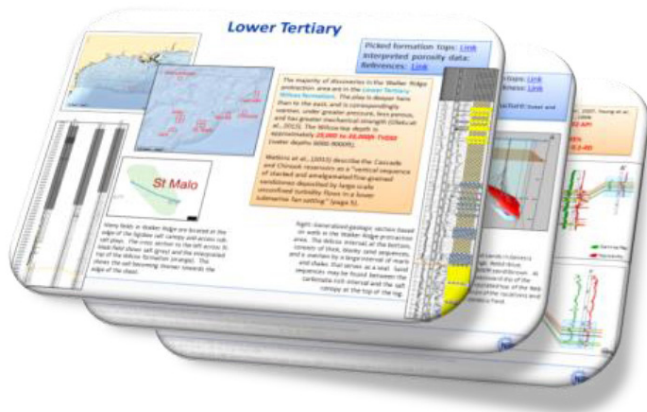


Figure 1. A graphic illustration of data included within the Subsurface Databook for the Offshore GOM.

SUBSURFACE TREND ANALYSIS

Identifying the need to span the data gaps in the subsurface GOM inspired a novel solution—the Subsurface Trend Analysis (STA). This unique approach combines geostatistical analyses with a prior geologic knowledge of the subsurface to provide an understanding of subsurface characteristics where little or no data exist. STA evaluates the variability of subsurface attributes (e.g., pressure, temperature, porosity, permeability) within a desired depth range and region, accompanied by descriptions of the geology and petroleum system of that region. This approach can assist a wide-range of users, from researchers to industry to policy makers, who seek to reduce the geologic uncertainty of the subsurface GOM.

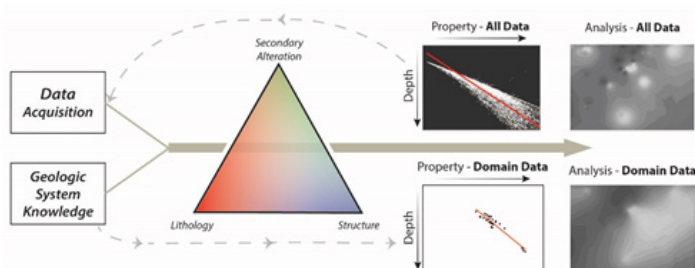


Figure 2. STA workflow.

CUMULATIVE SPATIAL IMPACT LAYERS AND SPATIALLY WEIGHTED IMPACT MODEL

To analyze broad risks associated with various forms of energy production and exploration, NETL developed the Cumulative Spatial Impact Layer (CSIL) tool. Utilizing a spatio-temporal approach, the CSIL tool integrates datasets related to various social, economic, and environmental information for a region (e.g., oil and gas infrastructure, tourism, local parks, etc.) to rapidly assess potential impacts and inform environmental risk reduction efforts.

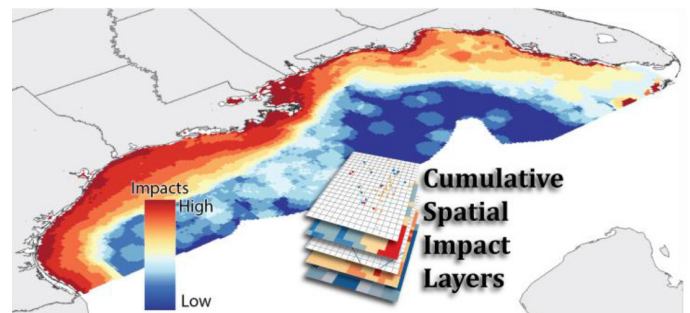


Figure 3. Graphic illustration of an example output of the CSIL tool at a 4.8 km resolution, based off estimated economic value of dominant Offshore activities in the GOM.

Building on the CSIL approach, the Spatially Weighted Impact Model (SWIM) integrates the CSIL with user-defined weights related to potential impacts to support research and regulatory decision needs. Originally designed to evaluate simulated offshore hydrocarbon spills, both CSIL and SWIM tools can be utilized with NETL's Blowout and Spill Occurrence Model (BLOSUM) to evaluate different scenarios. These results can then be used to identify knowledge gaps, support spill prevention efforts, and inform regulatory decisions. A Python-based ArcGIS toolbox is under construction for both CSILs and SWIM to help facilitate their use in evaluating potential impacts for other forms of energy production and exploration.

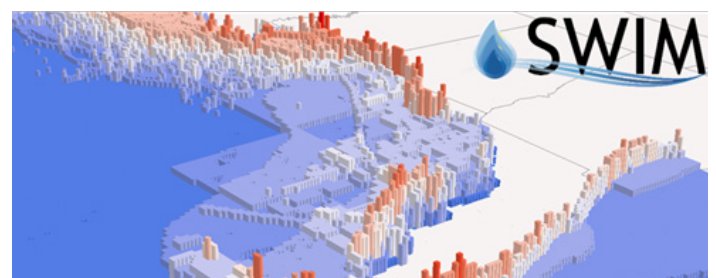


Figure 4. Example output from SWIM representing the predicted severity of impacts to different social, economic, and ecological sectors in the GOM. This example is based on a modeled oil spill scenario, where the taller red tones represent areas with the potential for more impacts. The shorter blue tones represent areas with the potential for little or no impacts.

SPATIO-TEMPORAL TOOLS AND GEOSTATISTICAL APPROACHES

SPATIALLY INTEGRATED MULTIVARIATE PROBABILITY ASSESSMENT TOOL

Increasingly, there is a need to develop and use science-based approaches to assess the probability of interactions between surface based activities and subsurface systems (e.g., induced seismicity, groundwater impact risks associated with underground injection, fugitive methane emissions, etc.). NETL's Spatially Integrated Multivariate Probability Assessment (SIMPA) tool was designed to evaluate trends and knowledge gaps associated with engineered-natural systems in support of risk, resource, and impact assessments. SIMPA considers the spatial and temporal interactions between different natural and anthropogenic factors to identify risks, such as those related to risk from subsurface gas and fluid migration. SIMPA combines spatio-temporal data and statistics to predict risks and measure uncertainty associated with the estimated risk using a custom built Fuzzy Logic approach. SIMPA fuzzy logic tool offers a flexible, robust approach that is easy for users to utilize for their own data and evaluate risks associated with other systems related to carbon storage and other forms of energy production and exploration

VARIABLE GRID METHOD

NETL's Variable Grid Method (VGM) is a novel approach that leverages geographic information system (GIS) capabilities to simultaneously visualize and quantify spatial data trends and underlying data uncertainty. The flexible VGM approach utilizes a range of spatial datasets and uncertainty quantifications that can be calculated using data related to sample density, sample variance, interpolation error, multiple simulations, etc., to create an integrated visualization of data and uncertainty. The intuitive manner of the VGM helps communicate the relationship between uncertainty and spatial data to effectively guide research, support advanced computation analyses, and help inform research, management, and policy decisions. The VGM approach is

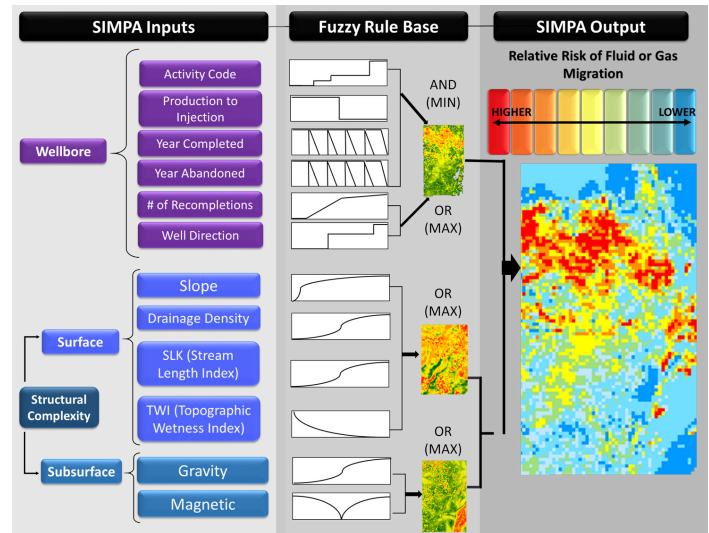


Figure 5. Fuzzy logic framework (left) and example output (right) from the SIMPA tool.

being developed into a Python Add-in extension and toolbar for ArcGIS, providing users the capabilities to utilize the VGM for their datasets, analysis, and models in support of their decision making needs.

BENEFITS

NETL's Geo-Analysis & Monitoring team continues to advance these and other spatio-temporal and geostatistical tools and approaches to support DOE's mission and goals for safe, reliable, and enduring access to domestic energy resources. In addition, these approaches complement NETL's existing capabilities such as NETL's [BLOSSOM](#), to provide robust analyses, enhance applications of NETL's Energy Data eXchange (EDX) and web mapping application, Geocube, and provide efficient, flexible, data-driven methods to assess and reduce risks related to various forms of energy exploration and production.

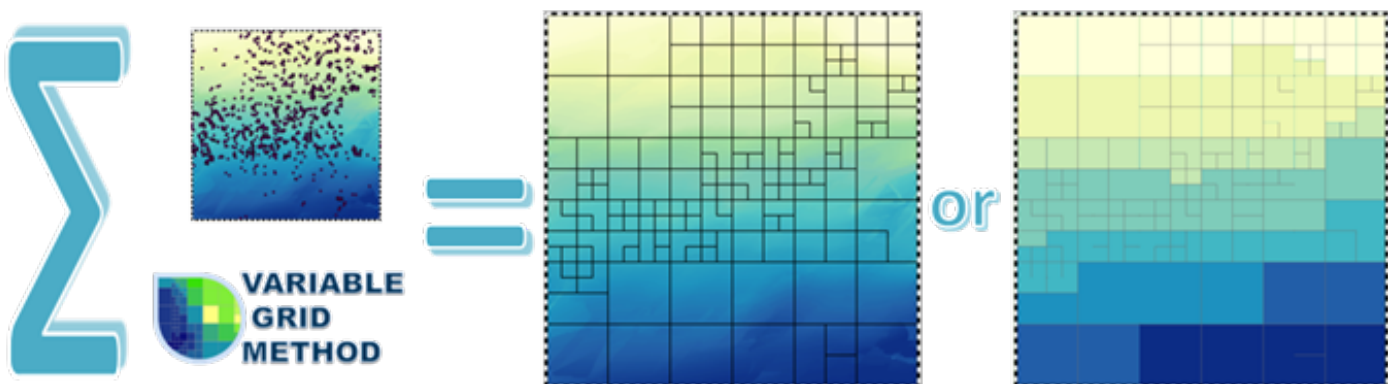


Figure 6. The workflow above summarizes how the VGM can be applied to spatial data (left) to produce an output that communicates both the data and any uncertainty information. By representing data trend (using colors) and uncertainty (using grid cell sizes) simultaneously, either as an overlay on top of a more traditional continuous raster interpolation (middle) or by associating the data values with the grid cells (right).



NETL is a U.S. Department of Energy national laboratory that drives innovation and delivers technological solutions for an environmentally sustainable and prosperous energy future. By leveraging its world-class talent and research facilities, NETL is ensuring affordable, abundant and reliable energy that drives a robust economy and national security, while developing technologies to manage carbon across the full life cycle, enabling environmental sustainability for all Americans.

Research Partners

Leidos Research Support Team (LRST) | Oak Ridge Institute for Science and Education (ORISE) | Oregon State University | Pacific Northwest National Laboratory

Contacts

Jennifer Bauer

Principal Contact

Geological & Environmental Systems Directorate

Jennifer.Bauer@netl.doe.gov

Dirk Link

Supervisor

Geological & Environmental Systems Directorate

Dirk.Link@netl.doe.gov