

Project/Performance Site Location(s)

Project/Performance Site Primary Location

☐ I am submitting an application as an individual, and not on behalf of a company, state, local or tribal government, academia, or other type of organization.

Organization Name: American Electric Power Service Corporation

UEI: FSLMSCJT6TW9

* Street1: 1 Riverside Plaza

Street2:

* City: Columbus

County:

* State: OH: Ohio

Province:

* Country: USA: UNITED STATES

* ZIP / Postal Code: 43215-2373

* Project/ Performance Site Congressional District: OH-015

Project/Performance Site Location 1

☐ I am submitting an application as an individual, and not on behalf of a company, state, local or tribal government, academia, or other type of organization.

Organization Name:

UEI:

* Street1:

Street2:

* City:

County:

* State:

Province:

* Country: USA: UNITED STATES

* ZIP / Postal Code:

* Project/ Performance Site Congressional District:

Delete Entry

Next Site

Additional Location(s)

Add Attachment

Delete Attachment

View Attachment

See attached for additional information regarding the Project site, and its impact on AEP's service territory and customer base.

American Electric Power Service Corporation

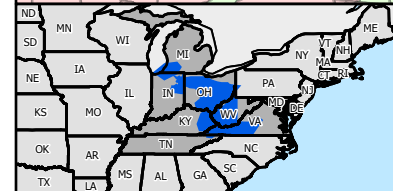
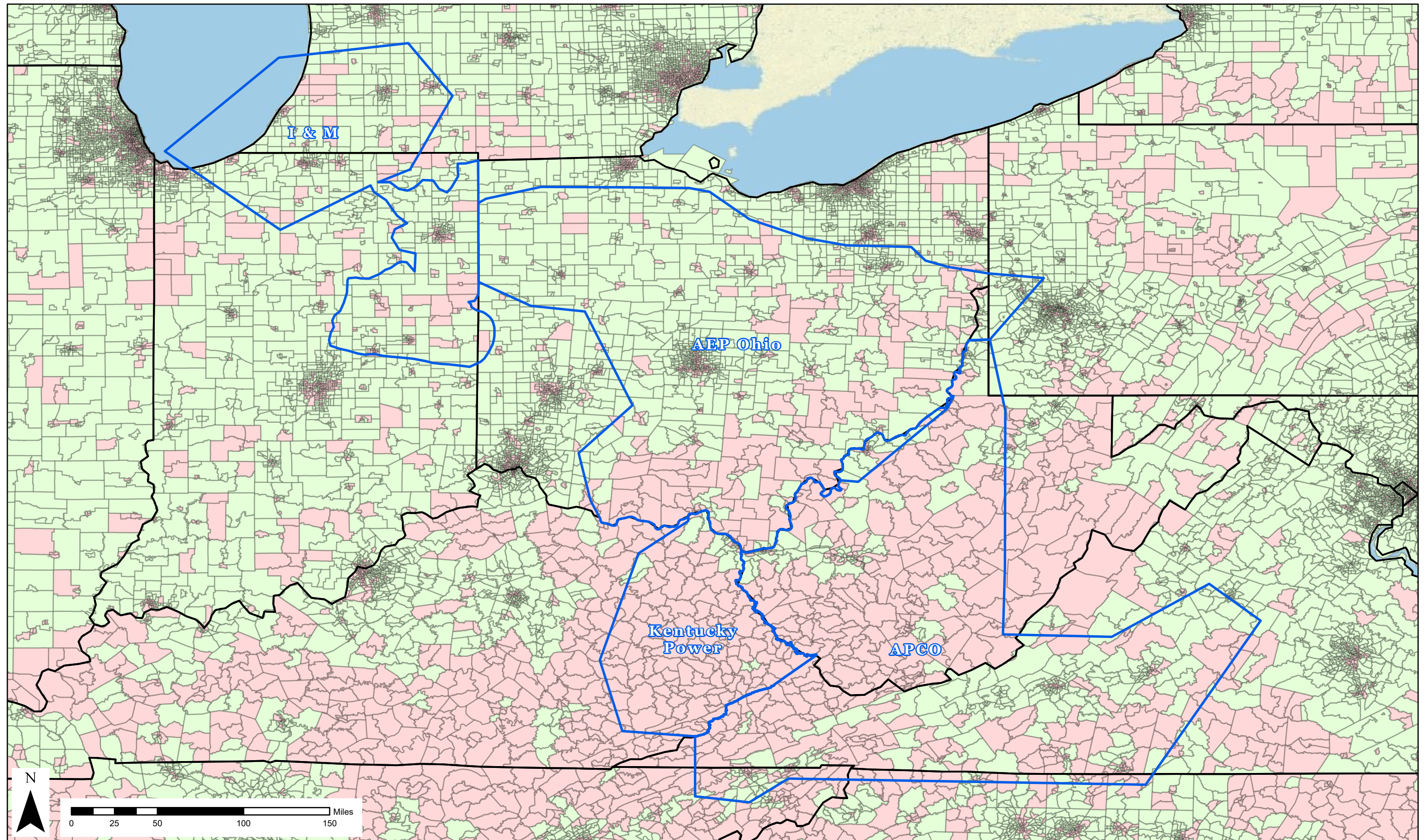
AEP Advanced Distribution Management System (“ADMS”) and Distributed Energy Resource Management System (“DERMS”)

1. Project Performance Site Locations Attachment

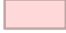
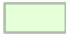
AEP’s ADMS/DERMS primary network assets would be implemented at two undisclosed AEP Transmission Control Centers (exact locations are not provided due to grid security concerns), with technology to be used by each operating company at their Distribution Dispatch Centers. Please see the enclosed map of AEP’s service territory¹. The Project would impact AEP’s entire service territory and customer base, 54% of which are in disadvantaged communities².

¹AEP has signed an amended agreement on the sale of its Kentucky operations to Liberty Utilities and expects to close on the sale in 2023 following approval of the transaction from the Federal Energy Regulatory Commission.

²Excluding Kentucky per pending sale.



Disadvantaged Communities AEP East

-  Disadvantaged Community
-  Non-Disadvantaged Community

-  AEP Region
-  State



