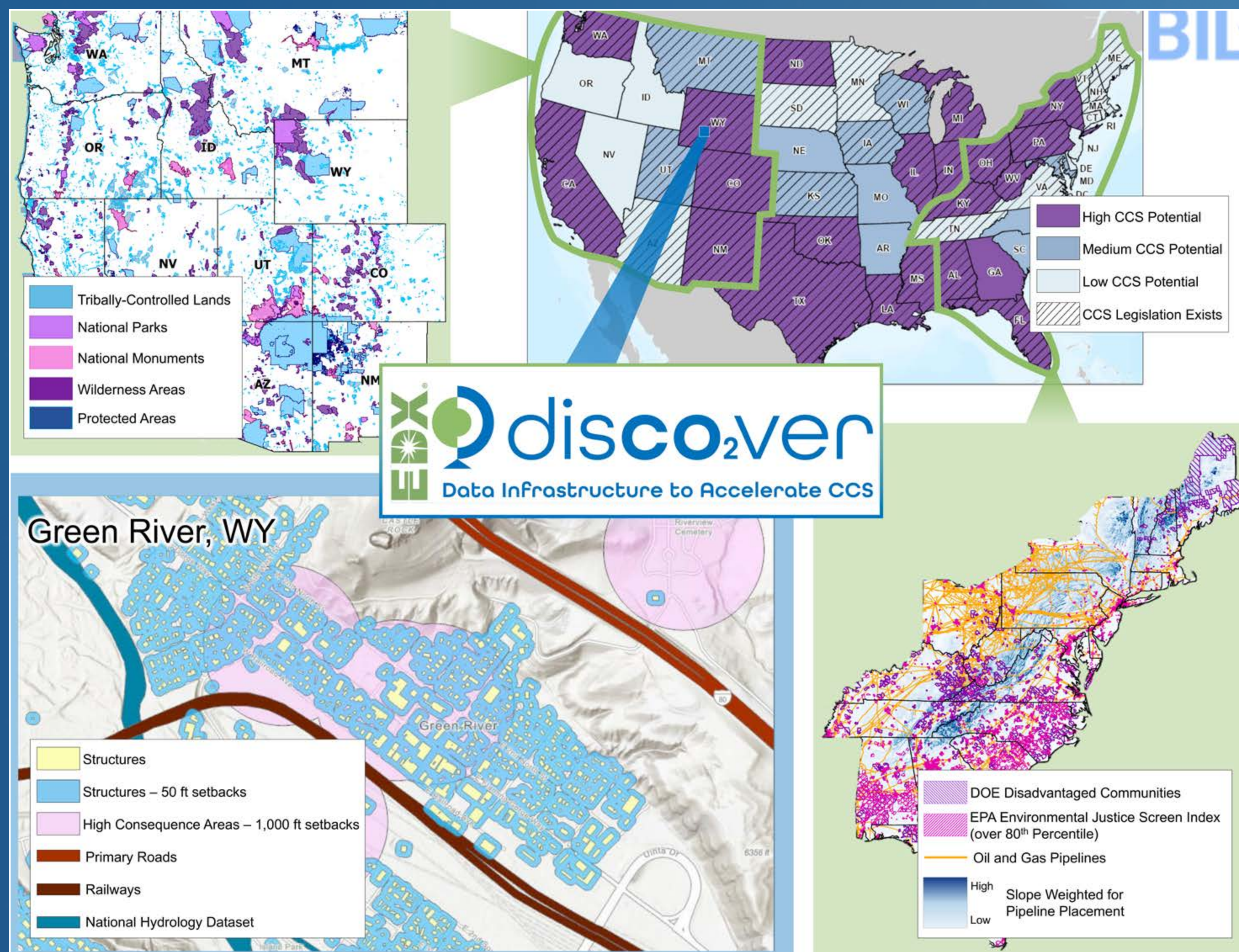


# NETL DEVELOPS PIPELINE ROUTE PLANNING DATABASE TO GUIDE CARBON DIOXIDE TRANSPORT DECISIONS

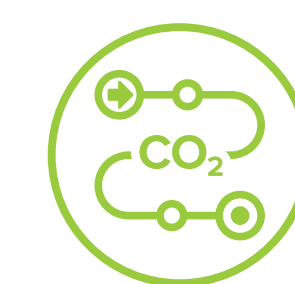
*The Pipeline Route Planning Database guides decisions on safely transporting carbon dioxide (CO<sub>2</sub>) from capture sources to underground storage sites and conversion facilities.*



Strategically planning safe and sustainable routes for transporting CO<sub>2</sub> is a critical priority in achieving a greenhouse gas-neutral economy by 2050.

- Planning infrastructure for CO<sub>2</sub> transport depends on evaluating a variety of regulatory, topographic, and potential risk variables.
- NETL has developed tools to facilitate and optimize a robust, national-scale CO<sub>2</sub> transportation infrastructure.
- The new database provides a curated compilation of critical decision factors, such as slope, public and energy infrastructure that provide planners with information about areas that are favorable for transportation routes.

## RESEARCH PRIORITY



**CARBON STORAGE AND TRANSPORT**

## PERFORMER



**NATIONAL ENERGY TECHNOLOGY LABORATORY**

NETL ANNUAL  
**ACCOMPLISHMENTS**  
2023



U.S. DEPARTMENT OF  
**ENERGY**

Fossil Energy and  
Carbon Management



**NATIONAL ENERGY TECHNOLOGY LABORATORY**