

August 2020

The Hazelwood Green Quarterly

– Forging New Ideas –

Construction is again in full swing at Hazelwood Green after an eight-week delay earlier this year due to COVID-19 restrictions. Read on for the latest news, including progress at the Plaza, renovations to the historic Roundhouse building, and the remarkable solar installations that are making Hazelwood Green a national model for sustainable design. Be sure to follow us on Twitter and Instagram @HazelwoodGreen for additional photos and updates.

Plaza Construction

Work at the Plaza, the community heart of Hazelwood Green, is almost complete, with plans for the two-acre space to open to the public in November. With earth moving complete and utility ties wrapping up, the lush lawns on the north end of the site will be ready to open this fall. Approximately 16,000 square feet of granite will be installed over the next few months, with the slabs forming a series of slanted sheets and levels over which a gentle skim of water will flow, culminating in a basin within the Central Plaza. At the Plaza's lower lawn, next to Mill 19, the ground will be transformed from construction-churned soil to refreshing green with the addition of sod later this summer.



Solar Installation

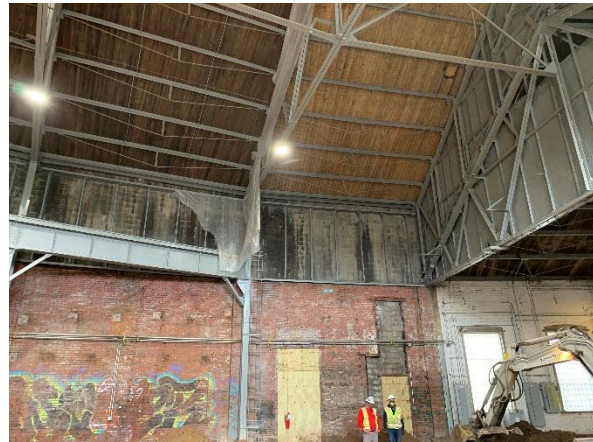
The soaring roof span at Mill 19 officially became the largest single sloped solar array in the United States with Scalo Solar's placement of the last of 4,784 silicon solar panels in July 2020. Solar work continues with the installation of 6,800 square feet of solar canopies in Parking Lot 1 and 16,800 square feet of canopy in Parking Lot 2. Together these will generate 412,512 kWh of power over one year, the equivalent of 312,372 pounds of burned coal or 3.9 tanker trucks worth

of gasoline.

Roundhouse Renovation

The Roundhouse, one of the original structures remaining at Hazelwood Green is being renovated by Pittsburgh-based GBBN Architects and will incorporate many original structural elements, including the turntable and operator cab, fume hood room, and track rails. Stabilization of the Roundhouse is complete, new steel foundations have been spliced onto the bottom of old columns within the structure, and in June the original roof deck was cleaned. During the rest of the summer and early fall, foundations and interior columns for the second floor will be poured, brick walls will be restored, and the building's interior bridge crane will be reinstalled and hung from the ceiling. Open exterior space and gardens for community use are also being designed to accommodate a variety of programs and events.

When the Roundhouse renovation is completed in the second quarter of 2021, GSVlabs (Global Silicon Valley Labs) will occupy the space, making it the site of their newest Innovation Hub. GSVlabs connects entrepreneurs, startups, investors and corporations through an online platform and will offer coworking space for entrepreneurs, collaborative working and event space, and training rooms for members.



City Theatre Drive-In Performances

Hazelwood Green will be the host site for City Theatre's innovative fall 2020 season, beginning with a Drive-in Community Arts Festival featuring artists curated by eight local arts organizations September 10-27. This will be followed by drive-in live performances

of *Frankenstein* by Manual Cinema September 30-October 18, which will incorporate a live score played against an original silent film and using light and shadows to tell the classic tale. Both series will feature live performers on stage and projected onto a big screen located in the parking lot at Mill 19, allowing audiences to enjoy the show from the safety of their vehicles. More information and ticket details are available [here](#).

Plants, Trees, and Flowers

The plants, trees, and flowers planned for Hazelwood Green are inspired by the region's natural beauty, with an emphasis on the selection of plant species that reflect Western Pennsylvania's vibrant woodlands – Redbuds, Magnolias, Beeches, Tulip Poplars, and Maples, to name a few. When completed, visitors will see a range of native understory shrubs including rhododendrons, dogwoods, viburnums, azaleas, and other woodland staples that offer visual interest year-round. Species in the stormwater beds that run the length of the west and northeast edges of the site will be installed over the next few months and were chosen for their ability to attract bees, hummingbirds, and other pollinators as well as to provide shifts in color and texture throughout the seasons. Finally, as part of an effort to test how vegetation can mitigate air pollution, the canopy trees that will frame the Plaza, such as the Lindens and Catalpas, were chosen for their ability to trap particulate matter. Installation of the canopy trees will begin late summer, marking a pivotal moment in the environmental revitalization of this site.



If others in your community or circle would like to receive this newsletter, please direct them to sign-up with their email at the Hazelwood Green website: www.hazelwoodgreen.com

Copyright © 2020 Almono LLC, all rights reserved.

Address
Almono LLC
4734 Second Avenue
Pittsburgh, PA 15207