



NanoSonic, Inc.

Wireless Networked Sensors in Water for Heavy Metal Detection

2019 Crosscutting Research Project Review

Contract #: DE-SC0013811

Dr. Hang Ruan, Principal Investigator, VP of Sensors and Systems

NanoSonic, Inc.

Adjunct Professor, Department of Mechanical Engineering,
Virginia Tech

TPOC

Dr. Jessica Mullen

National Energy Technology Laboratory

April 10, 2019



 *NanoSonic, Inc.*

Program Objective

Objective: Develop wireless networked sensors using conformal nanomembrane based chemical field effect transistors (ChemFET) for heavy metal detection in water for energy sector.

Electrostatic self-assembly (ESA) + conformal nanomembrane ChemFET + wireless sensor network
→ *in situ* environmental monitoring

Key Expectations:

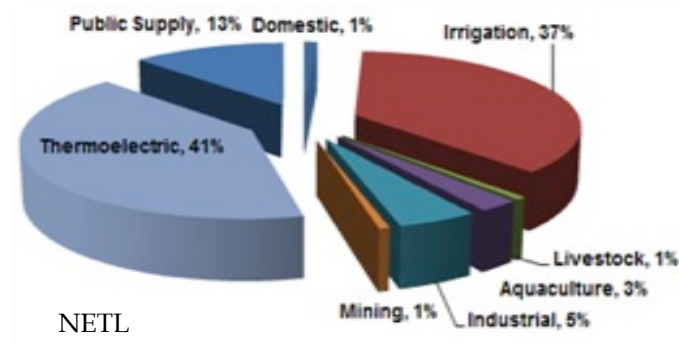
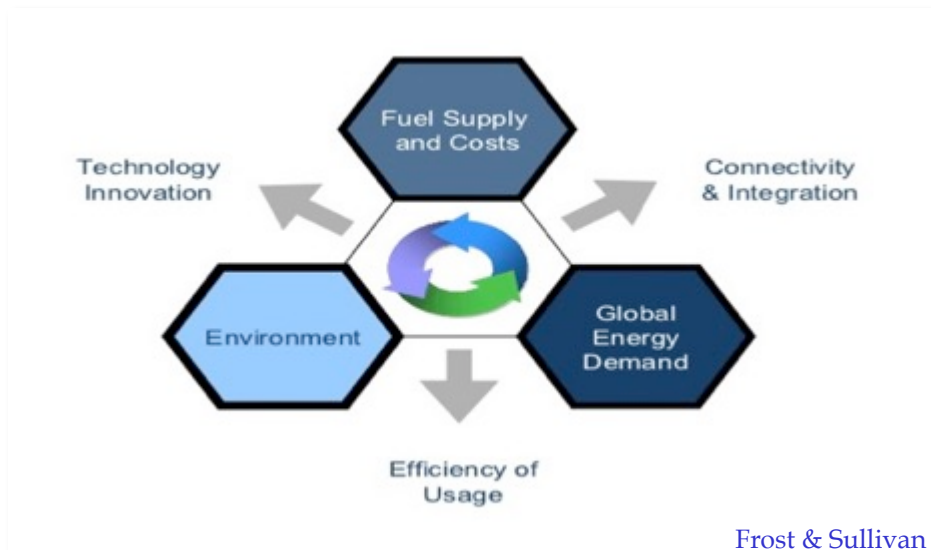
- Heavy metal selectivity: RCRA 8s (arsenic, barium, cadmium, chromium, lead, mercury, selenium and silver)
- Heavy metal ion sensitivity: <0.01 ppm, with minimal cross-sensitivities
- Sensor element size: <(100 micron)²
- Dynamic range: >40dB
- Frequency response: DC to >10kHz
- Operating temperature: -40°C to 100°C
- Multiplexing capability: >100 individual sensor elements
- Power supply: Battery or integrated energy harvesting device
- Transmission band: 2.4 GHz, IEEE 802.15.4 protocol; BLE protocol
- Packaging options: Patch, Conformal, Portable, and Flowable
- Operation mode: wake-up, measurement, data transfer, and low-power stand-by



**Nano-CS Integrated
RCRA 8 Sensor Probe**

Heavy Metal Detection in Water for Energy Sector

Heavy metals such as lead, arsenic, chromium, mercury, and cadmium in water have attracted a great deal of attention for their impact on human health.



Thermoelectric power generation accounts for over 40 percent of freshwater withdrawals (143 billion gallons of water per day) and over 3 percent of freshwater consumption (4 billion gallons per day) in the United States.

The Challenge: balance of three issues involving: flexibility, efficiency, reliability, and environmental quality

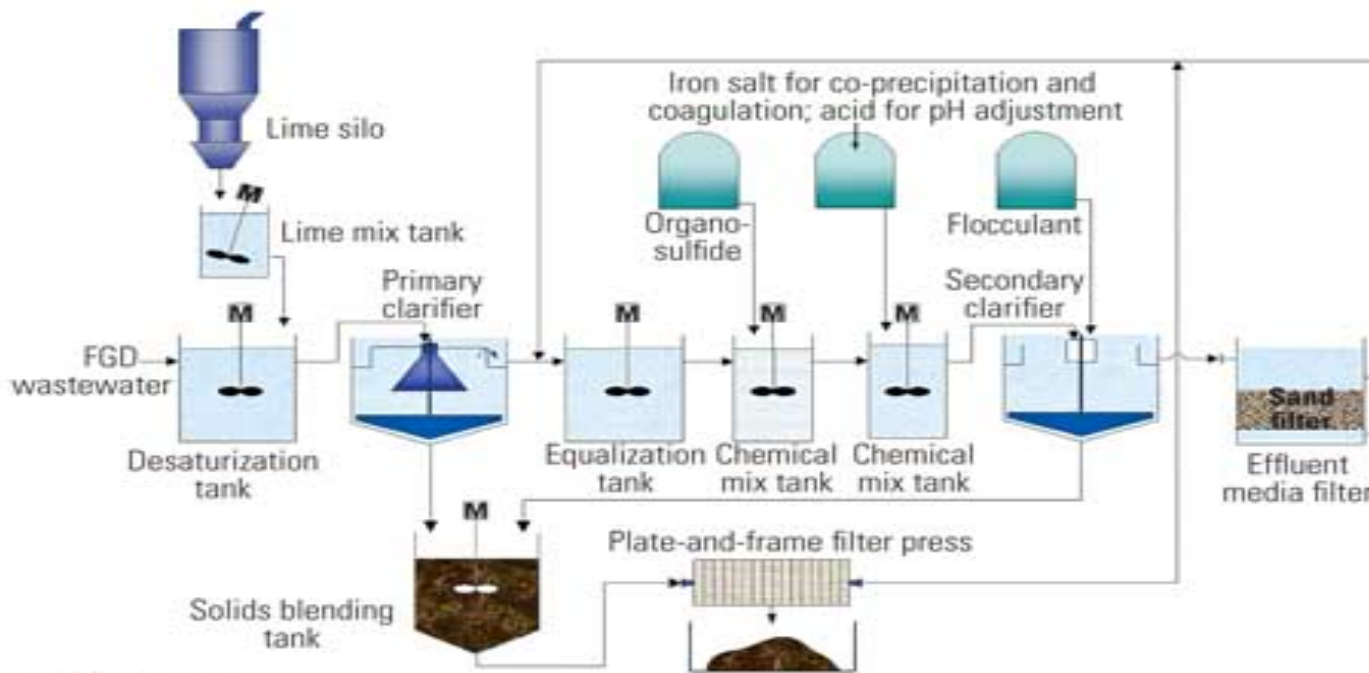
Opportunity for Wireless Sensors for Heavy Metal Detection

To allow efficient monitoring of heavy metal levels for environmental surveillance in water for fossil energy sector, a precise, mobile and highly sensitive/selective/re-usable measuring instrument is required.

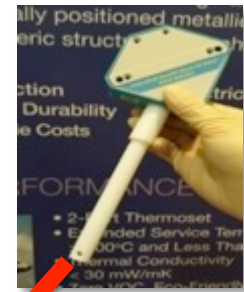
- ❑ Conventional chemical concentration sensing is typically done by taking soil or water samples on-site and transporting them back to a laboratory for analysis, or hand-carrying a sensor unit around an area and making, recording and mapping data.
- ❑ Multiple sensor devices can be configured in a small, lightweight and low cost array to analyze multiple sensor targets simultaneously. It can be used as an in-situ sensor attachable for permanent installation or portable inspection in a field.
- ❑ Such systems can be used to
 - detect and map multiple environmentally-hazardous chemical concentrations,
 - locate sources of pollution from analysis of concentration gradients, and
 - identify chemical concentrations potentially harmful to people and/or destructive to industry/agriculture.



Example of Potential Use - Flue Gas Desulfurization (FGD) Wastewater Treatment



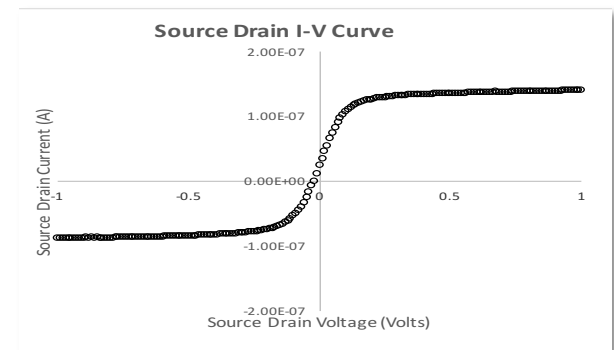
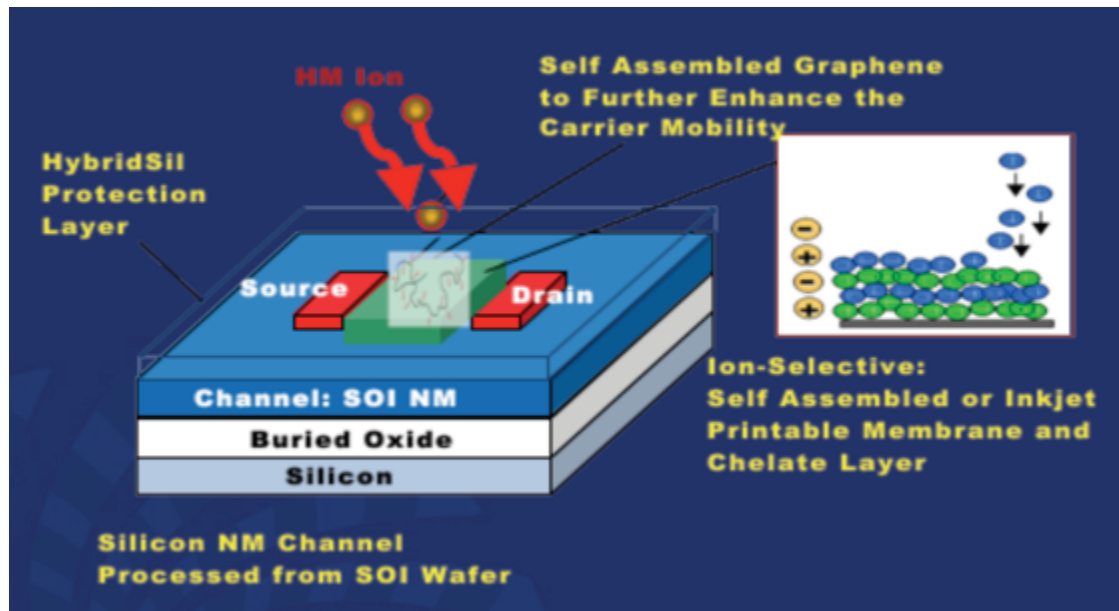
Note: M = mixer



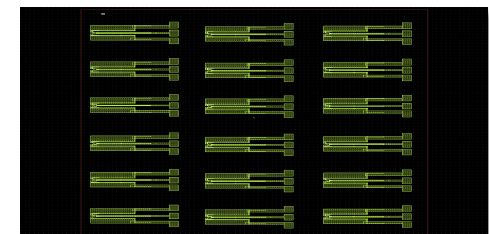
Potential use of RCRA 8 sensor to monitor the heavy metals of treated effluent for real-time close loop control

<http://www.powermag.com/flue-gas-desulfurization-wastewater-treatment-primer/>

Initial Nanomembrane ChemFET Sensor Configuration



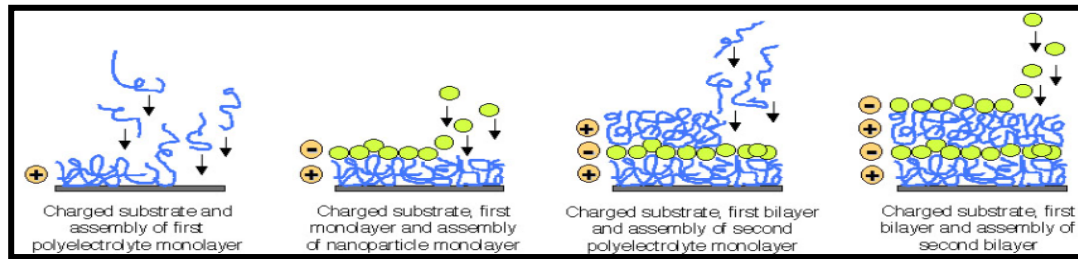
I-V characteristics of ChemFET



Mask Design

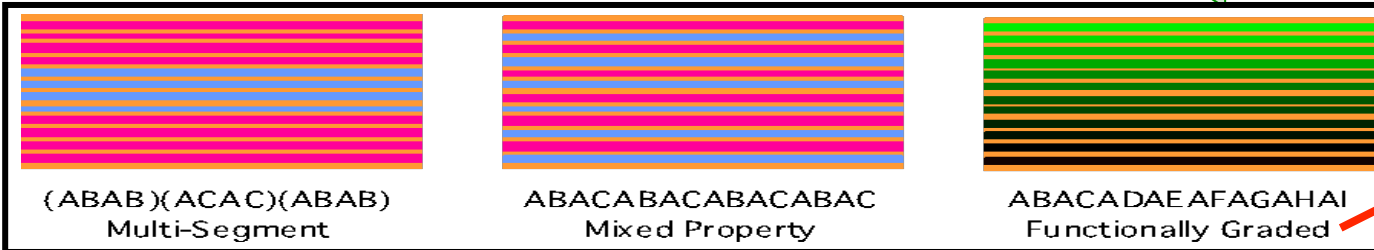
- High Carrier Mobility
- High Sensitivity
- High Selectivity
- Ultralightweight
- Ultraflexibility
- Array Configuration

Electrostatic Self-Assembly (ESA)

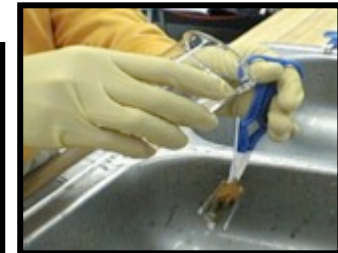


Self Assembly Process:

- polymer/polymer
- polymer/particle
- particle/particle



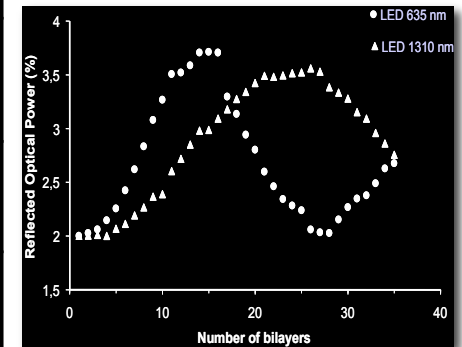
- Conformal, homogeneous molecular layer by layer process
- Precise nanoscale control over thickness
- Excellent long-term environmental robustness
- Environmentally-friendly process
- Multifunction – conductors, polymers, semiconductors, ceramics



Partial Library of Demonstrated ESA Material Functions

| Material Properties | Precursors | Measured Properties | Comments |
|-------------------------|--|---|--|
| Chemical Detection | Semiconductor nanocrystals | Chemical Sensitivity and Selectivity | Surface modification on nanocrystals |
| Electrical Conductivity | Noble metal nanoclusters (Ag, Cu, Au, Pt) | 0.1 – 1.0 $\Omega \cdot m$ $10^{-4} \Omega \cdot cm$ | Mechanically flexible, optically transparent |
| Refractive Index | Polymers and polymer / nanocluster combinations | $n = 1.2$ to 1.8 | Tailored Transparent stacks |
| Young's Modulus | Noble metal nanoclusters (Ag, Cu, Au, Pt), Carbon nanotubes | 0.1 MPa – 1.0 Gpa | Mechanically flexible |
| Thermal conductivity | Polymers and nanoclusters | 2 W/mK | 20 W/mK feasible based on current work |
| Mechanical Robustness | Oxide nanoclusters (TiO_2 , ZrO_2 , Al_2O_3 , SiO_2) | Good Taber abrasion and haze results | Nanohardness 1 GPa |

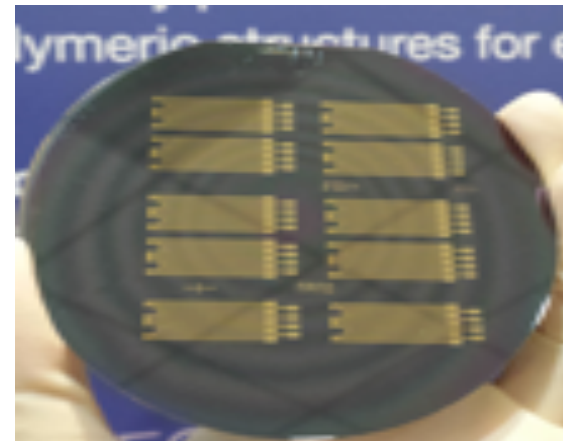
Monitoring Fabry-Perot Cavity Growth Buildup of $([ZrO_2^+ / PSS^-]_{10})$ by ESA



Silicon Nanomembrane



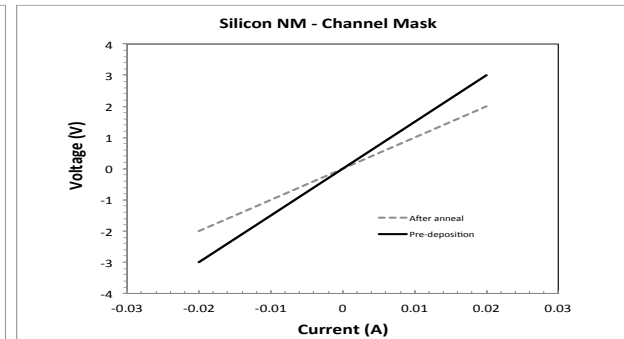
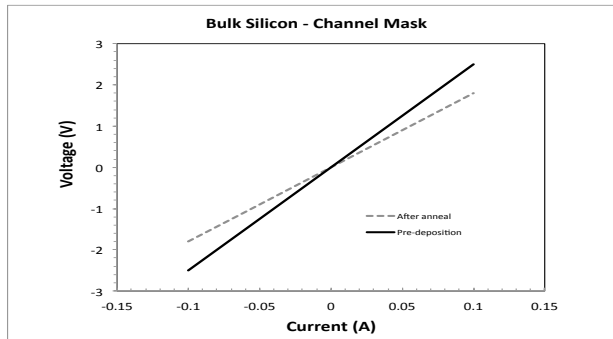
- Thin
- Flexible
- Can be strain engineered
- Transparent
- Transferable
- Bondable
- Stackable
- Conformable
- Patternable (wires, ribbons, tubes)



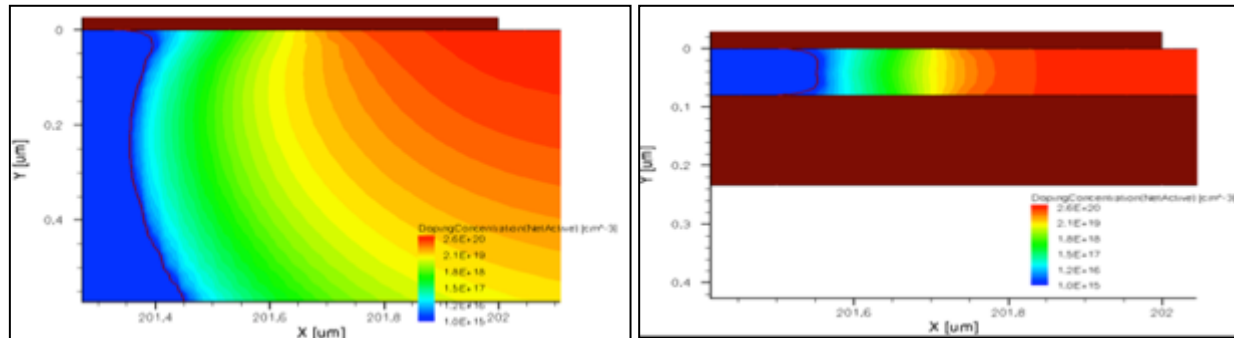
Nanomembrane-based ChemFET sensors

- 1974: Epitaxial $\text{Ga}_{1-x}\text{Al}_x\text{As}$ ($X>0.6$) sacrificial layer for separating a $\text{GaAs}/\text{Ga}_{1-x}\text{Al}_x\text{As}$ ($x=0.3$) from GaAs with HCl etchant
- 1987: Yablonoitch: spin on wax to strain film for efficient release, enable removal of high quality GaAs films as large as $0.8 \times 2 \text{ mm}^2$ and as thin as 80 nm
- 2004: Rogers: transferred membranes of Si from silicon-on-insulator (SOI) to fabricate Si flexible thin-film electronics
- 2012: NanoSonic: Si nanomembrane based flexible solar cells
- 2015: NanoSonic: Nanomembraned based ChemFET sensors

Process Monitoring During Fabrication



I-V characteristics of bulk and nanostructures with oxide mask and channel length of $5\ \mu\text{m}$, the sensor operates in the linear region



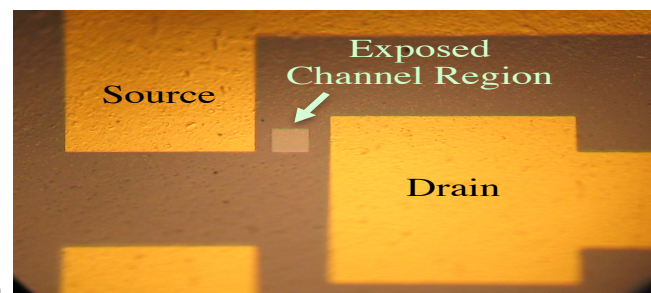
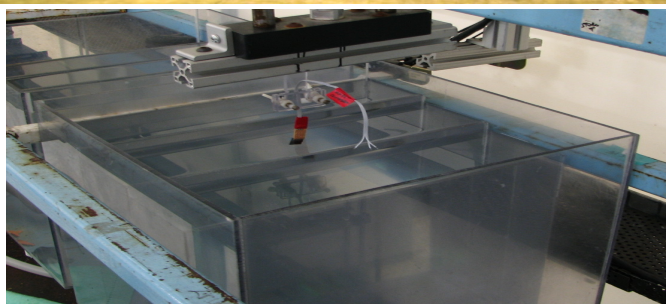
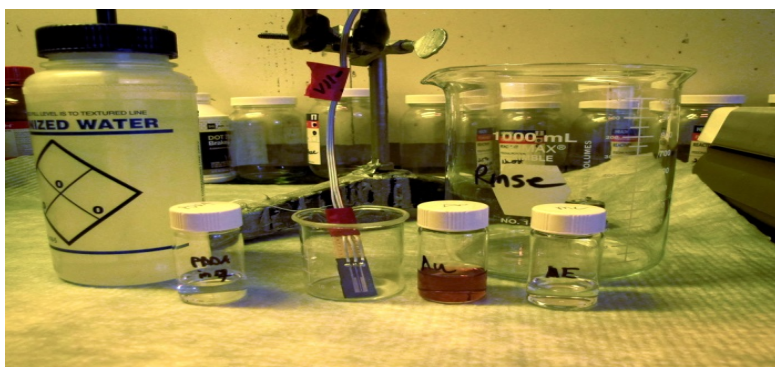
Phosphorus doping profile at the channel-drain side for bulk Si (left) and SOI nanomembranes (right) after source and drain doping. Oxide mask shown in dark red and buried oxide in SOI in dark red

Standard Sensor Packages



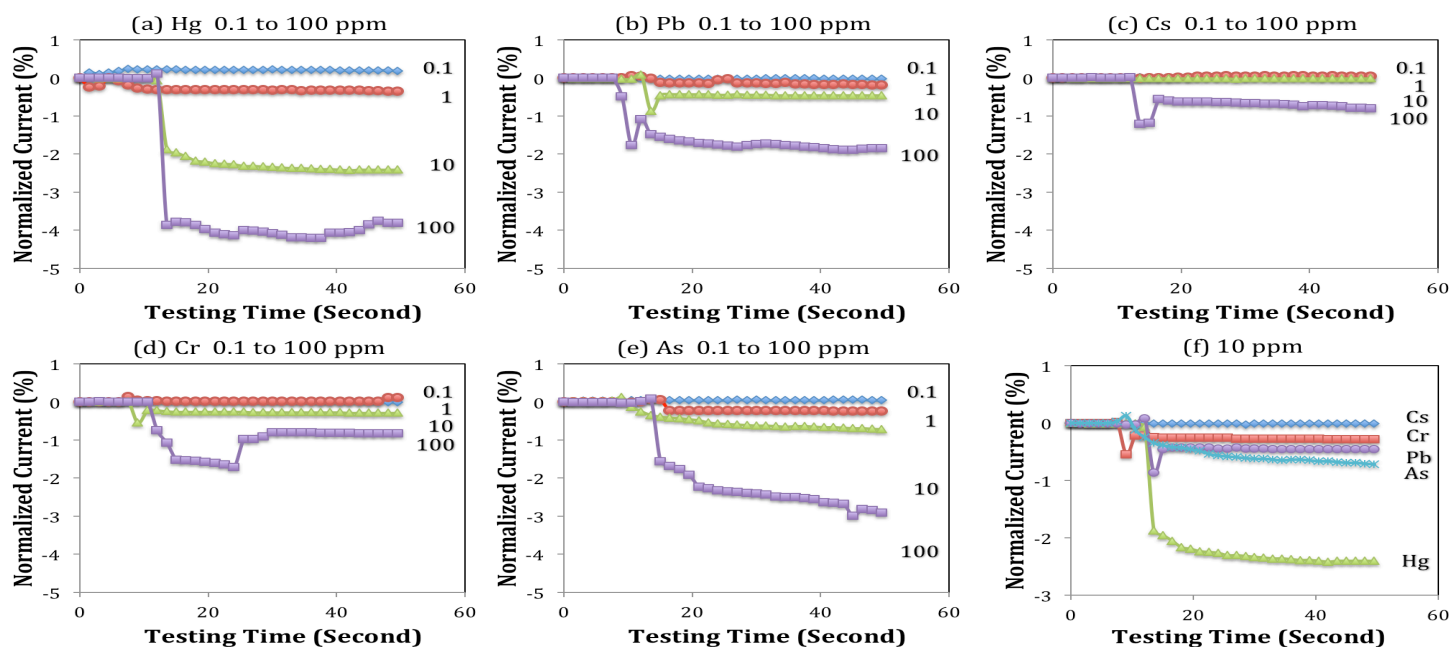
Standard Sensor Package Can be “Flowable” (Left), “Portable” (Center) and “Attachable” (Right) for Sensor Applications

Self-Assembly of Gold/Thiol Functionalization Layers



Hand dipping (a, b) and Robot (c) Set Up Used to Self-Assemble the Gold/Thiol Functionalization Layers. (d) Micrograph of a Completed Device with 9 Bilayers of Gold Nanoparticles in the 100 μm by 100 μm Channel Region.

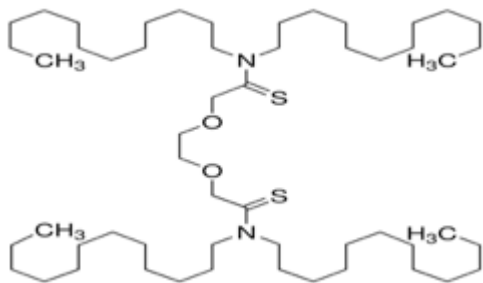
Initial Modification Example #1: Self-Assembled Au and Thioglycolic Acid-Functionalized ChemFET Sensor



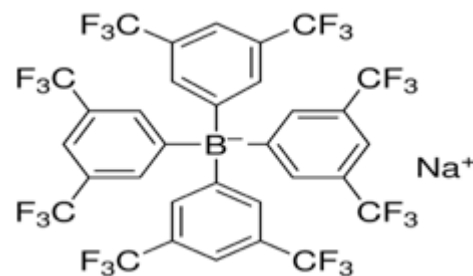
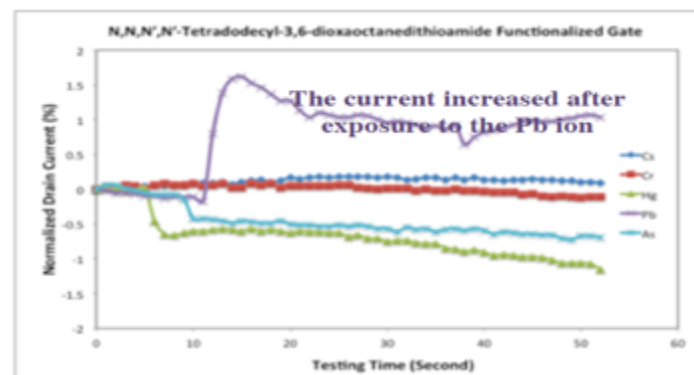
Testing results of the self assembled Au and thioglycolic acid functionalized ChemFET sensor after exposure to different concentrations of (a) Hg, (b) Pb, (c) Cs, (d) Cr, and (e) As ion solutions, as well as (f) different targets with the same concentration of 10ppm. The response for the Hg ion is significantly higher than for other ions.

Initial Modification Example #2: : Sensor Modification for Lead Ion Selectivity

| Chemical Name | Abbreviation | Wt% |
|--|--------------|------|
| tetrahydrofuran | THF | |
| polyvinylchloride | PVC | 42.1 |
| bis(2-ethylhexyl)sebacate | DOS | 54.9 |
| Sodium tetrakis(4-fluorophenyl)borate dihydrate | NaTFPB | 0.44 |
| N,N,N',N'-Tetradodecyl-3,6-dioxaoctanedithioamide | ETH 5435 | 1.39 |
| Tetrakis(4-chlorophenyl)borate tetradodecylammonium salt | ETH 500 | 1.15 |

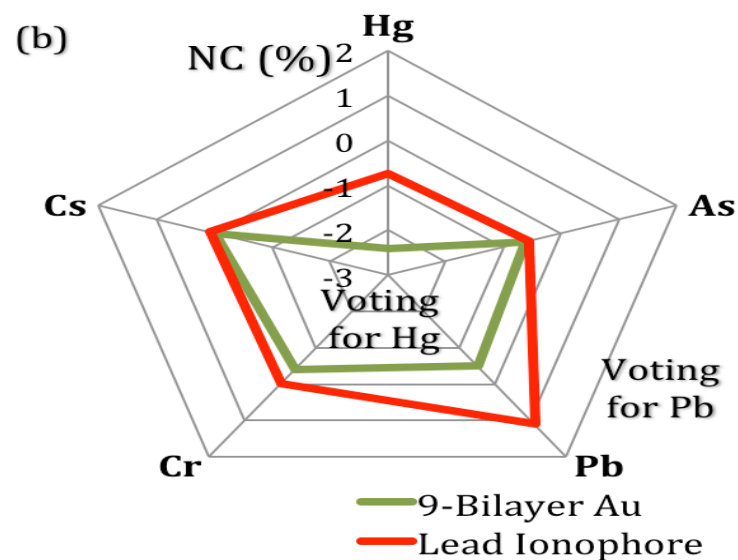
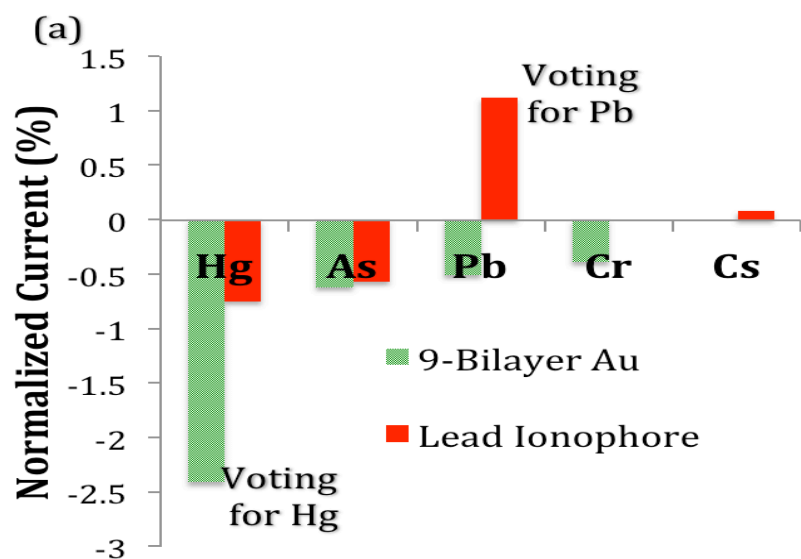


N,N,N',N'-Tetradodecyl-3,6-dioxaoctanedithioamide



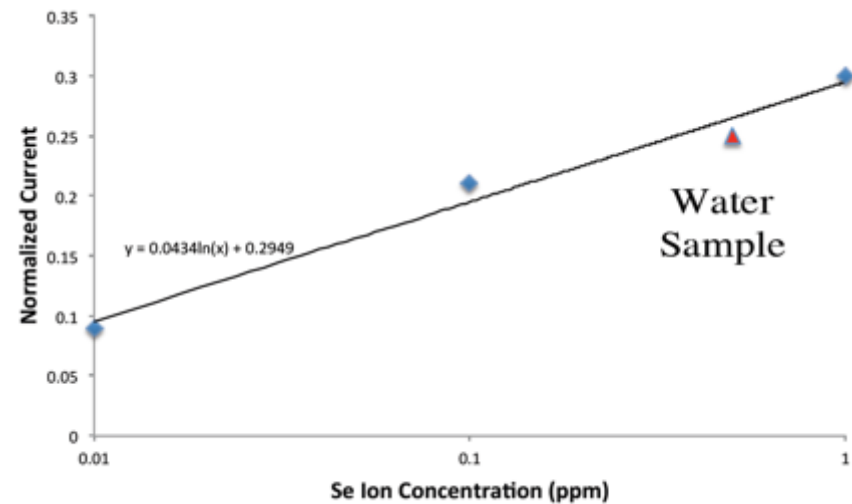
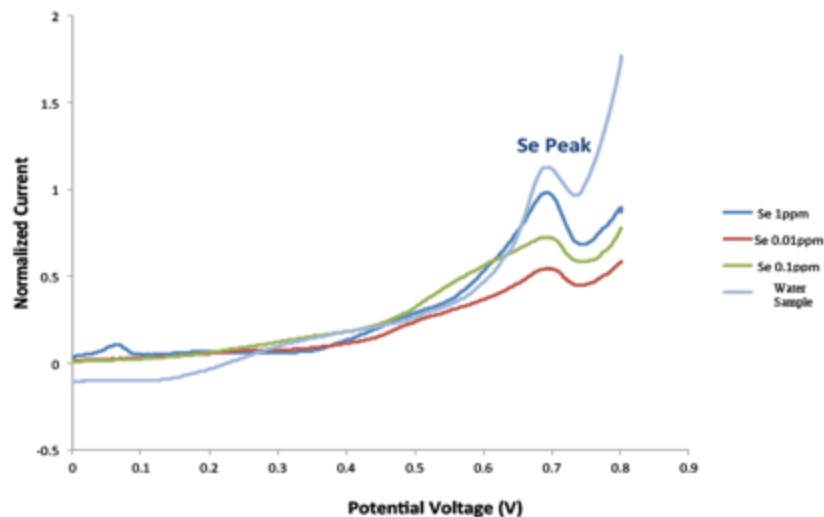
Sodium tetrakis(4-fluorophenyl)borate dihydrate

Multi-Target Selectivity Results for Self Assembled Au Sensor and Lead Ionophore Sensor



Cross sensitivity results with Bar Plot (a) and Radar Plot (b) for self assembled Au sensor and Lead ionophore sensor.

Stripping Voltammetry Enhanced ChemFET Sensor - Selenium Detection

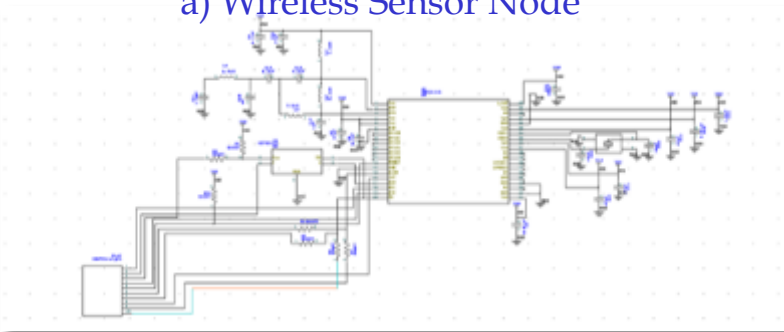


Testing results of a self assembled gold nanoparticles and selenium ionophore (in-house) functionalized chemical sensor in response to Se solutions. The selenium concentration from the sample is measured as 0.78ppm, which is in good agreement with the concentration level of 0.86ppm obtained from a third party laboratory

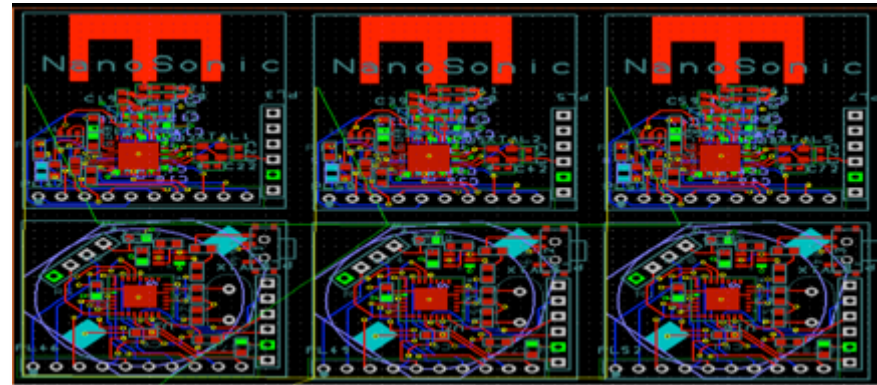
Development of Wireless Sensor Electronics



a) Wireless Sensor Node



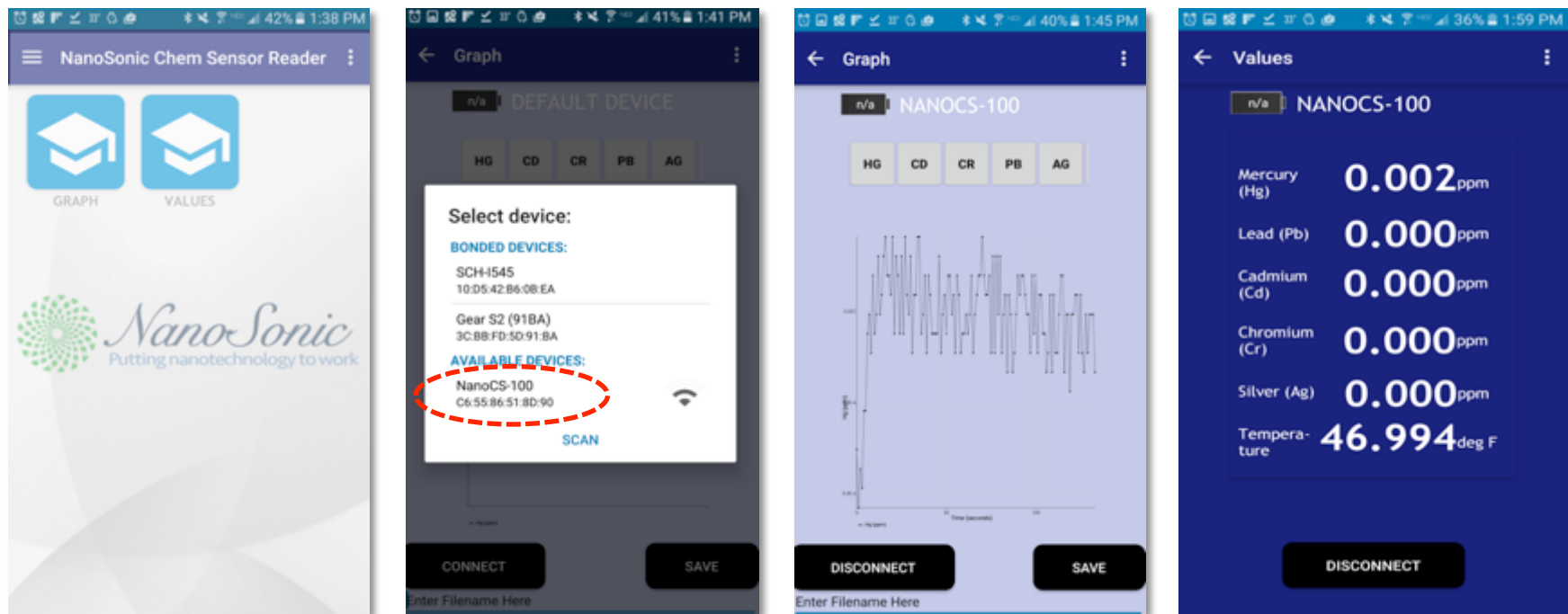
b) Schematic



c) Modular Hardware

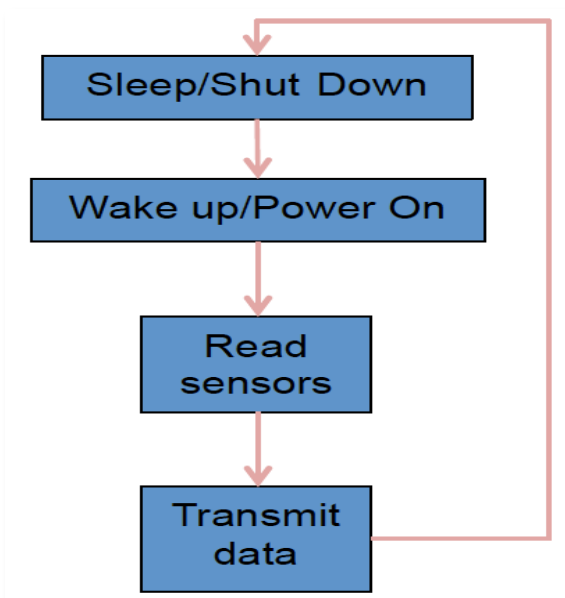
Multiplexing capability: >100 individual sensor elements; Transmission band: 2.4 GHz, IEEE 802.15.4 protocol; Operation mode: wake-up, measurement, data transfer, and stand-by

Tablet App to Read and Output Data



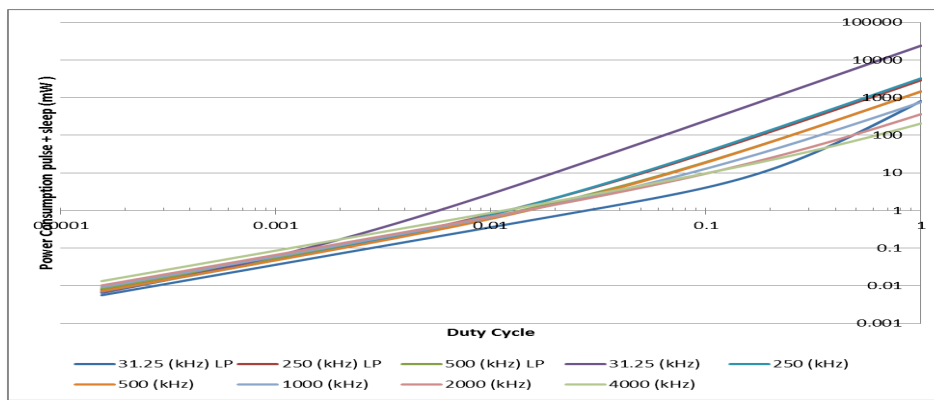
Low power tablet App with code to read, process and output the data wirelessly from the sensor to tablet.

Power Management of Wireless Sensor Network



Power-Availability Duty Cycle Allows for Extremely Low Average Power Consumption for Wireless Sensor Nodes.

| Run time optimization for Power Consumption | | | | | | | | |
|---|---------|---------|-----------------|------------------|--------------------|---------------------|--|--|
| CLOCK | LP-INTO | HP-INTO | Sleep Time (ms) | Active Time (ms) | Current Sleep (mA) | Current Active (mA) | | |
| 31.25 (kHz) | X | | 73000 | 30000 | 1.1 | 24.5 | | |
| 250 (kHz) | X | | 9600 | 3600 | 1.52 | 24.5 | | |
| 500 (kHz) | X | | 4800 | 1800 | 1.62 | 24.5 | | |
| 31.25 (kHz) | | X | 73000 | 30000 | 1.16 | 24.25 | | |
| 250 (kHz) | | X | 9200 | 4000 | 1.36 | 24.6 | | |
| 500 (kHz) | | X | 4800 | 1800 | 1.4 | 24.6 | | |
| 1000 (kHz) | | X | 2400 | 920 | 1.8 | 25 | | |
| 2000 (kHz) | | X | 1200 | 440 | 2 | 25 | | |
| 4000 (kHz) | | X | 560 | 240 | 2.6 | 26 | | |



Acknowledgements

Thank You:

- Dr. Jessica Mullen and Dr. Briggs White
and
- NanoSonic DOE SBIR Team

For Additional Information:

Dr. Hang Ruan
NanoSonic, Inc.
hruan@nanosonic.com