

Energy-Water Crosscut Program Support (LCA)



Timothy J. Skone P.E.

Joseph Chou, Aranya Venkatesh, Derrick Carlson, & Erik Shuster

INTERNAL USE ONLY - NOT APPROVED FOR PUBLIC RELEASE

April 10, 2019



Solutions for Today | Options for Tomorrow



- Thermoelectric power is the largest sector responsible for water withdrawals
- Investigate reliability for power plants in responding to changes in water resource scarcity
- Develop a robust and efficient method of determining water use for power generation sector
- Identify plants that have large water stress footprints (WSF) and thus opportunities for improvements

Dieter, C.A., Maupin, M.A., Caldwell, R.R., Harris, M.A., Ivahnenko, T.I., Lovelace, J.K., Barber, N.L., and Linsey, K.S., 2018, *Estimated use of water in the United States in 2015*. U.S. Geological Survey Circular 1441, 65 p., <https://doi.org/10.3133/cir1441>.

Thermoelectric Water Consumption

Agenda



- Characterizing monthly thermoelectric water consumption at the plant level – data sources and representativeness
- Ranking of water consumption by thermoelectric plants regionally
- Water Scarcity Assessment – overview of next steps to integrate monthly plant water consumption characterizations into AWARE-US model (Available Water Remaining US at the county level lower 48 - ANL)

- **EIA-860 and EIA-923**

- EIA-923 provides annual data on power generation and fuel consumption for power plants
- EIA-860 collects information about generators and environmental data at power plants

- **NREL**

- Data on minimum and maximum ranges for a wide range of generator-cooling technology types (Macknick 2011)

- **USGS**

- Estimated use of water in the United States in 2015

EIA Data Filtering and Aggregation

- **Retired and canceled generators were removed**
 - cancelled prior to completion & operation
 - retired generators at existing plants
- **Unique pairing codes created**
 - E.g., generator and cooling codes were paired
- **Recirculating water-cooling technologies were combined**
 - Similar in technology and consumption
 - Recirculating – Induced Draft, Forced Draft, and Natural Draft

| Code | Cooling System Description |
|---------|--------------------------------------|
| OC | Once through with cooling pond |
| ON | Once through, with no cooling pond |
| RC | Recirculate: Cooling Pond |
| Rt | Recirculate: Forced Draft |
| Rt | Recirculate: Induced Draft |
| Rt | Recirculate: Natural Draft |
| DC | Dry Cooling |
| HRI/HRF | Hybrid: Dry and Induced/Forced Draft |
| OT | Other |

| Code | Generation System Description |
|------|---|
| CGCC | Coal Integrated Gasification Combined Cycle |
| CSC | Conventional Steam Coal |
| OG | Landfill Gas |
| MSW | Municipal Solid Waste |
| NGCC | Natural Gas Fired Combined Cycle |
| NGSC | Natural Gas Steam Turbine |
| NU | Nuclear |
| OG | Other Gases |
| OWB | Other Waste Biomass |
| PC | Petroleum Coke |
| PL | Petroleum Liquids |
| ST | Solar Thermal with Energy Storage |
| ST | Solar Thermal without Energy Storage |
| WB | Wood/Wood Waste Biomass |

EIA Data Representation & Quality Assessment



- **Empty entries present in EIA data**
 - 33.1% of entries have neither water withdrawal or consumption values
 - 23.7% of net generation entries are blank
- **Blanks populated by**
 - Merging data
 - Calculations
- **Mismatched data**
 - Cooling units listed in EIA-923 but not in EIA-860
 - Cooling units in EIA-860 but no consumption
 - Average consumption used for generator-cooling technology

| Summer Capacity of Steam Turbines (MW) | Gross Generation from Steam Turbines (MWh) | Net Generation from Steam Turbines (MWh) | Water Withdrawal Volume (million gal) | Water Consumption Volume (million gal) | Water Withdrawal Intensity Rate (gal/MWh) | Water Consumption Intensity Rate (gal/MWh) |
|--|--|--|---------------------------------------|--|---|--|
| 249 | | | 4,028 | 0 | | |
| 249 | | | 5,818 | 0 | | |
| 249 | | | 3,677 | 0 | | |
| 249 | | | 3,250 | 0 | | |
| 249 | | | 2,552 | 0 | | |
| 249 | | | 3,927 | 0 | | |
| 249 | | | 4,012 | | | |
| 249 | | | 2,552 | | | |
| 249 | | | 3,514 | 0 | | |
| 249 | | | 1,491 | | | |
| 249 | | | 4,630 | | | |
| 249 | | | 2,685 | 0 | | |
| 55 | 2,181 | 1,760 | 4,028 | 0 | | |
| 55 | 1,608 | 1,176 | 5,818 | 0 | | |
| 55 | 0 | -173 | 3,677 | 0 | | |
| 55 | 0 | -163 | 3,250 | 0 | | |
| 55 | 0 | -269 | 2,552 | 0 | | |
| 55 | 3,019 | 2,326 | 3,927 | 0 | | |
| 55 | 4,660 | 3,749 | 4,012 | | | |
| 55 | 0 | -338 | 2,552 | | | |
| 55 | 0 | -264 | 3,514 | 0 | | |
| 55 | 0 | -179 | 1,491 | | | |
| 55 | 0 | 73 | 4,630 | | | |
| 55 | 0 | -252 | 2,685 | 0 | | |

Duplicate Entry Errors

Barry Plant in Alabama, 2015

- Multiple combinations of generators, boilers, and cooling units
- E.g. Barry Plant in AL
 - Generator 4 & 5 both tied to cooling units 4 & 5
 - Water use reported based on cooling unit
 - Counting the same withdrawal and consumption twice
 - Allocation is necessary

| Plant Name | Year | Month | Generator ID | Boiler ID | Cooling ID | Water Withdrawal (million gal) | Water Consumption (million gal) |
|------------|------|-------|--------------|-----------|------------|--------------------------------|---------------------------------|
| Barry | 2015 | 1 | 4 | 4 | 4-5 | 6,188 | 308 |
| Barry | 2015 | 2 | 4 | 4 | 4-5 | 8,119 | 59 |
| Barry | 2015 | 3 | 4 | 4 | 4-5 | 16,895 | 368 |
| Barry | 2015 | 4 | 4 | 4 | 4-5 | 19,266 | 78 |
| Barry | 2015 | 5 | 4 | 4 | 4-5 | 16,021 | 237 |
| Barry | 2015 | 6 | 4 | 4 | 4-5 | 19,838 | 372 |
| Barry | 2015 | 7 | 4 | 4 | 4-5 | 20,482 | 653 |
| Barry | 2015 | 8 | 4 | 4 | 4-5 | 19,899 | 477 |
| Barry | 2015 | 9 | 4 | 4 | 4-5 | 19,706 | 452 |
| Barry | 2015 | 10 | 4 | 4 | 4-5 | 17,508 | 32 |
| Barry | 2015 | 11 | 4 | 4 | 4-5 | 17,297 | 298 |
| Barry | 2015 | 12 | 4 | 4 | 4-5 | 18,457 | 174 |
| Barry | 2015 | 1 | 5 | 5 | 4-5 | 6,188 | 308 |
| Barry | 2015 | 2 | 5 | 5 | 4-5 | 8,119 | 59 |
| Barry | 2015 | 3 | 5 | 5 | 4-5 | 16,895 | 368 |
| Barry | 2015 | 4 | 5 | 5 | 4-5 | 19,266 | 78 |
| Barry | 2015 | 5 | 5 | 5 | 4-5 | 16,021 | 368 |
| Barry | 2015 | 6 | 5 | 5 | 4-5 | 19,838 | 78 |
| Barry | 2015 | 7 | 5 | 5 | 4-5 | 20,482 | 237 |
| Barry | 2015 | 8 | 5 | 5 | 4-5 | 19,899 | 372 |
| Barry | 2015 | 9 | 5 | 5 | 4-5 | 19,706 | 653 |
| Barry | 2015 | 10 | 5 | 5 | 4-5 | 17,508 | 477 |
| Barry | 2015 | 11 | 5 | 5 | 4-5 | 17,297 | 452 |
| Barry | 2015 | 12 | 5 | 5 | 4-5 | 18,457 | 32 |
| Barry | 2015 | 1 | A1CT | U6C | U6C | | 62 |

Water Use Allocation

Outlier Analysis for Multitype Plants



- Allocated water use among multiple generator-to-cooling types

| Plant Code | Plant Name | Month | Generator ID | Cooling ID | Net generation (MWh) | Generator Count | Ratio split | Total Water Consumption Adjusted (million gal) | Water Consumption Intensity Adjusted (gal/MWh) |
|------------|------------|-------|--------------|------------|----------------------|-----------------|-------------|--|--|
| 3 | Barry | 1 | 4 | 4-5 | 56352 | 2 | 0.35 | 108 | 1908 |
| 3 | Barry | 2 | 4 | 4-5 | 144128 | 2 | 0.35 | 21 | 142 |
| 3 | Barry | 3 | 4 | 4-5 | 153587 | 2 | 0.35 | 128 | 835 |
| 3 | Barry | 4 | 4 | 4-5 | 150186 | 2 | 0.35 | 27 | 182 |
| 3 | Barry | 5 | 4 | 4-5 | 167995 | 2 | 0.35 | 83 | 493 |
| 3 | Barry | 6 | 4 | 4-5 | 142640 | 2 | 0.35 | 130 | 910 |
| 3 | Barry | 7 | 4 | 4-5 | 172826 | 2 | 0.35 | 228 | 1318 |
| 3 | Barry | 8 | 4 | 4-5 | 114060 | 2 | 0.35 | 166 | 1458 |
| 3 | Barry | 9 | 4 | 4-5 | 130105 | 2 | 0.35 | 158 | 1211 |
| 3 | Barry | 10 | 4 | 4-5 | 122865 | 2 | 0.35 | 11 | 91 |
| 3 | Barry | 11 | 4 | 4-5 | 106193 | 2 | 0.35 | 104 | 978 |
| 3 | Barry | 12 | 4 | 4-5 | 116235 | 2 | 0.35 | 61 | 522 |
| 4 | Barry | 1 | 5 | 4-5 | -3371 | 2 | 0.65 | 201 | n/a |
| 5 | Barry | 2 | 5 | 4-5 | -4544 | 2 | 0.65 | 38 | n/a |
| 3 | Barry | 3 | 5 | 4-5 | 249318 | 2 | 0.65 | 239 | 960 |
| 3 | Barry | 4 | 5 | 4-5 | 340151 | 2 | 0.65 | 51 | 150 |
| 3 | Barry | 5 | 5 | 4-5 | 109351 | 2 | 0.65 | 155 | 1414 |
| 3 | Barry | 6 | 5 | 4-5 | 380250 | 2 | 0.65 | 242 | 637 |
| 3 | Barry | 7 | 5 | 4-5 | 420389 | 2 | 0.65 | 425 | 1012 |
| 3 | Barry | 8 | 5 | 4-5 | 413282 | 2 | 0.65 | 310 | 751 |
| 3 | Barry | 9 | 5 | 4-5 | 367997 | 2 | 0.65 | 294 | 799 |
| 3 | Barry | 10 | 5 | 4-5 | 217971 | 2 | 0.65 | 21 | 95 |
| 3 | Barry | 11 | 5 | 4-5 | 206431 | 2 | 0.65 | 194 | 939 |
| 3 | Barry | 12 | 5 | 4-5 | 238501 | 2 | 0.65 | 113 | 475 |

Outlier Analysis

Outlier Analysis for Monotype Plants

- **Interquartile range analysis**
 - Found outlier boundaries
- **Replaced outliers w/ average values based on power plant type**
- **Reassigned extreme generator-cooling types**

| Gen-Cool | Water Consumption Intensity Rate (Gallons / MWh) |
|----------|--|
| CSC-OC | 234 |
| CSC-ON | 92 |
| CSC-RC | 457 |
| CSC-Rt | 416 |
| NGCC-Rt | 226 |
| NGSC-ON | 432 |
| NGSC-RC | 2448 |
| NGSC-Rt | 541 |
| NU-ON | 27 |
| NU-Rt | 594 |
| OG-ON | 25288 |
| OT-Rt | 538 |
| PC-Rt | 120 |
| PL-Rt | 728 |
| WB-Rt | 488 |

Outlier Analysis

Outlier Analysis for Multitype Plants



- Smooth out monthly anomalies
- Final outlier replacement
 - Median values used
 - Updated multi-type allocation factors
- Exported to Excel

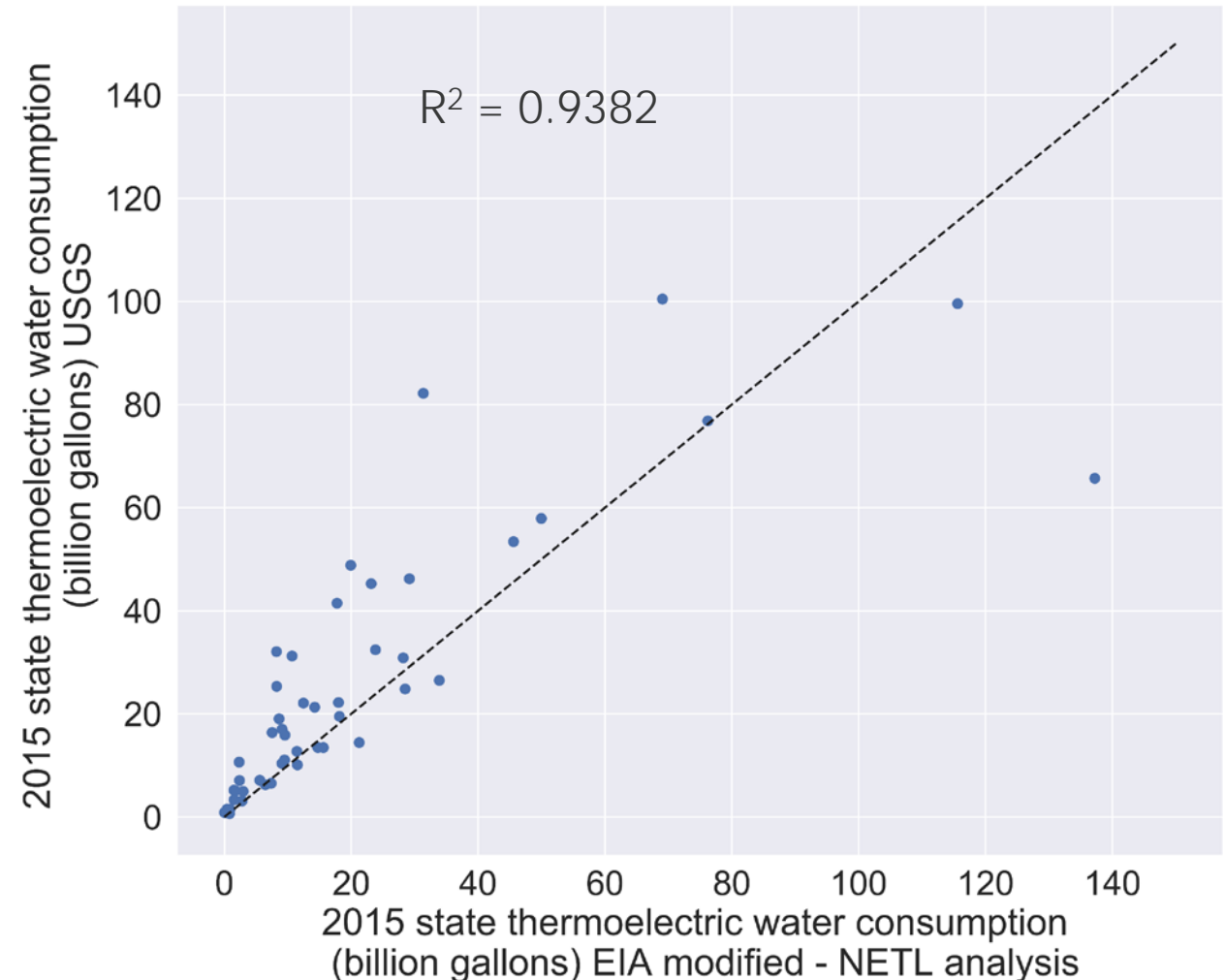
| Plant Code | Plant Name | Year | Month | Generator ID | Cooling ID | Cooling Type | Generator Type | Water Consumption Intensity Rate (gal/MWh) | Water Consumption Intensity Adjusted (gal/MWh) |
|------------|---------------|------|-------|--------------|------------|--------------|----------------|--|--|
| 628 | Crystal River | 2015 | 1 | 5 | 5 | Rt | CSC | 622 | 444 |
| 628 | Crystal River | 2015 | 3 | 5 | 5 | Rt | CSC | 408 | 408 |
| 628 | Crystal River | 2015 | 5 | 5 | 5 | Rt | CSC | 279 | 279 |
| 628 | Crystal River | 2015 | 6 | 5 | 5 | Rt | CSC | 191 | 444 |
| 628 | Crystal River | 2015 | 7 | 5 | 5 | Rt | CSC | 338 | 338 |
| 628 | Crystal River | 2015 | 8 | 5 | 5 | Rt | CSC | 489 | 444 |
| 628 | Crystal River | 2015 | 10 | 5 | 5 | Rt | CSC | 904 | 481 |
| 628 | Crystal River | 2015 | 11 | 5 | 5 | Rt | CSC | 0 | 444 |
| 628 | Crystal River | 2015 | 12 | 5 | 5 | Rt | CSC | 1784 | 481 |

Comparison of NETL/EIA Data to USGS

State-Level, 2015



- Aggregated by state
- USGS tends to show higher values
 - Use of theoretical modeling vs. reported values
 - Any point on the dotted line indicates a perfect match between USGS & NETL's modified EIA data

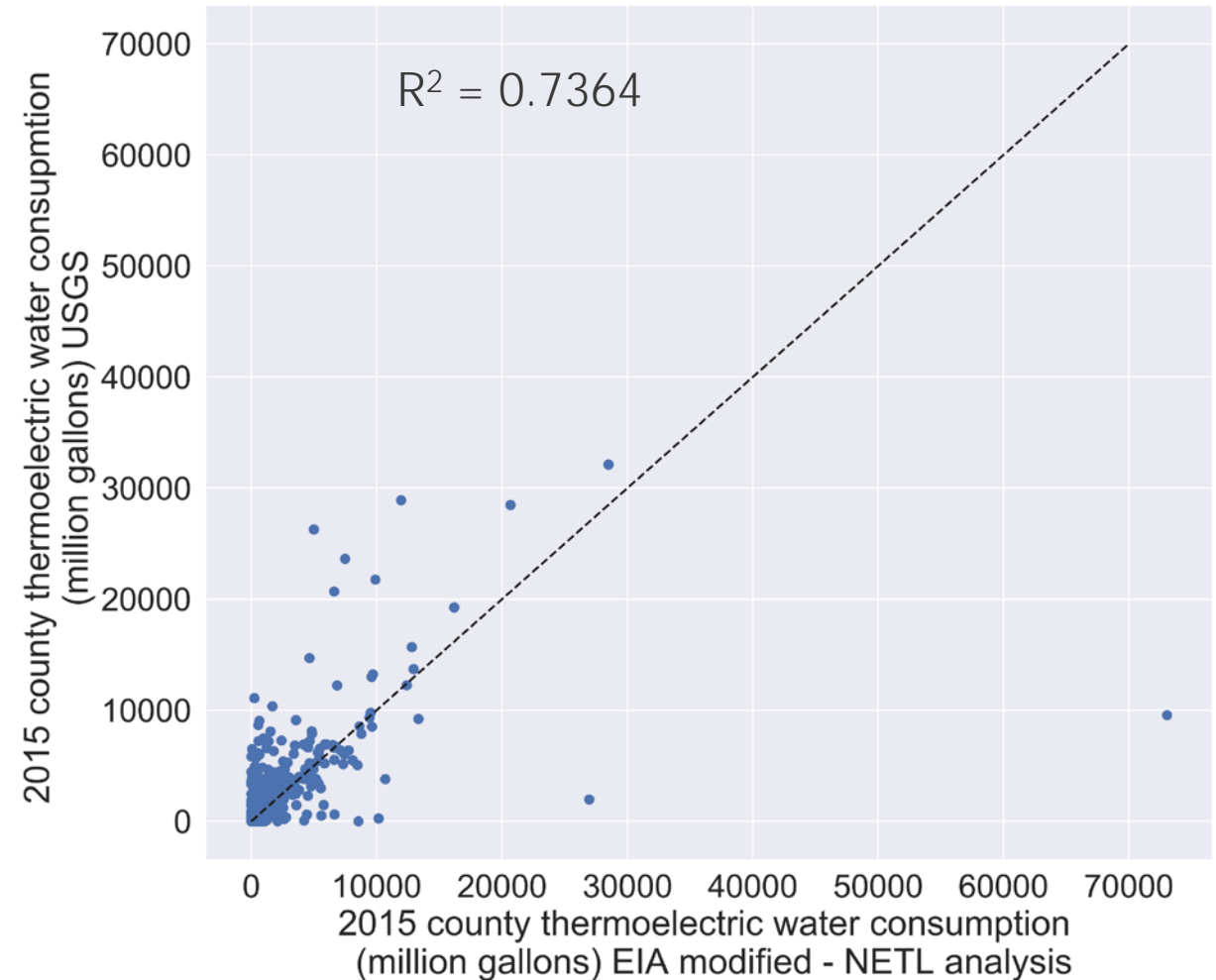


Dieter, C.A., Maupin, M.A., Caldwell, R.R., Harris, M.A., Ivahnenko, T.I., Lovelace, J.K., Barber, N.L., and Linsey, K.S., 2018, *Estimated use of water in the United States in 2015*: U.S. Geological Survey Circular 1441, 65 p., <https://doi.org/10.3133/cir1441>.

Comparison of NETL/EIA Data to USGS

County-Level, 2015

- Aggregated by county
- USGS tends to have higher values again
- NETL outlier from Martin plant in Florida
 - In the process of exploring this plant in more detail



Quality Check

- NREL published a water consumption and withdrawals review in 2011
- Checked against NREL water consumption estimates
 - 75% match in gal/MWh (every units for every month)
 - Additional 12% within +/-100 gal/MWh

| Fuel Type | Cooling Technology | Technology | Median (gal/MWh) | Min (gal/MWh) | Max (gal/MWh) |
|-------------|--------------------|----------------|------------------|---------------|---------------|
| Nuclear | Tower | Generic | 672 | 581 | 845 |
| | Once-through | Generic | 269 | 100 | 400 |
| | Pond | Generic | 610 | 560 | 720 |
| Natural Gas | Tower | Combined Cycle | 198 | 130 | 300 |
| | | Steam | 826 | 662 | 1170 |
| | Once-through | Combined Cycle | 100 | 20 | 100 |
| | | Steam | 240 | 95 | 291 |
| | Pond | Combined Cycle | 240 | 240 | 240 |
| | Dry | Combined Cycle | 2 | 0 | 4 |
| | Inlet | Steam | 340 | 80 | 600 |
| Coal | Tower | Generic | 687 | 480 | 1100 |
| | | IGCC | 372 | 318 | 439 |
| | Once-through | Generic | 250 | 100 | 317 |
| | Pond | Generic | 545 | 300 | 700 |
| CSP | Tower | Trough | 865 | 725 | 1057 |
| | | Power Tower | 786 | 740 | 860 |
| | Dry | Trough | 78 | 43 | 79 |
| | | Power Tower | 26 | 26 | 26 |
| | Hybrid | Trough | 338 | 105 | 345 |
| | | Power Tower | 170 | 90 | 250 |
| Biopower | Tower | Steam | 553 | 480 | 965 |
| | | Biogas | 235 | 235 | 235 |
| | Once-through | Steam | 300 | 300 | 300 |
| | Pond | Steam | 390 | 300 | 480 |

J. Macknick, R. Newmark, G. Heath, K. Hallett, 2011. *A Review of Operational Water Consumption and Withdrawal Factors for Electricity Generating Technologies*, Technical Report NREL/TP-6A20-50900 (Accessed Nov. 13, 2018)

Definitions and Equations

EWR is the amount of water required to sustain a riverine ecosystem.

Availability Minus Demand (AMD)

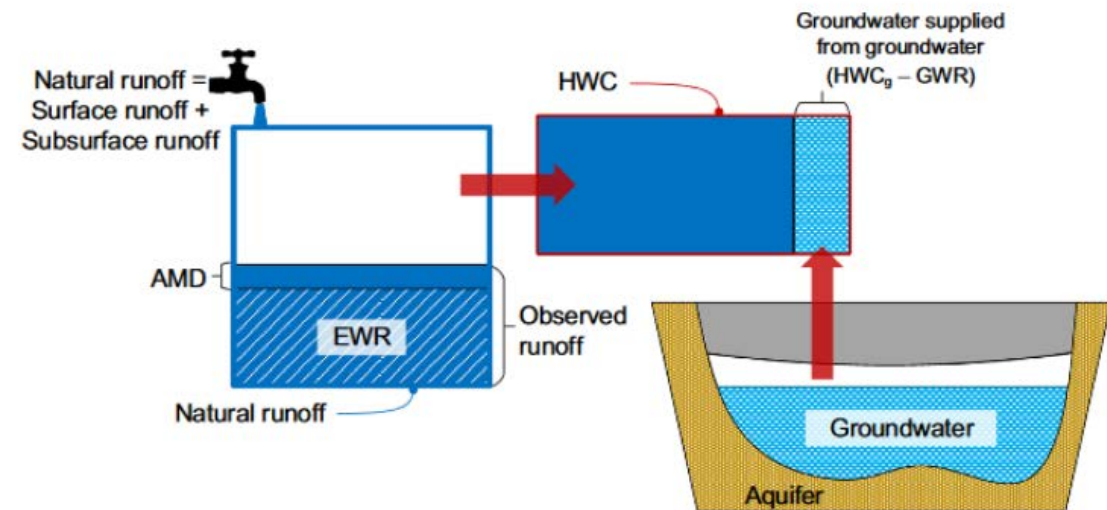
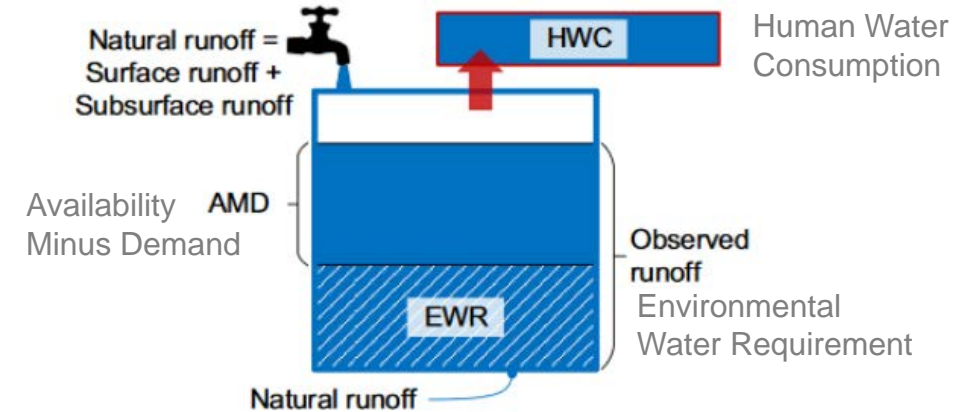
$$AMD_i = [Natural\ runoff - HWC - EWR]_i$$

Available Water Remaining Characterization Factor

$$[AWARE\ CF]_i = \frac{AMD_{ref}}{AMD_i}$$

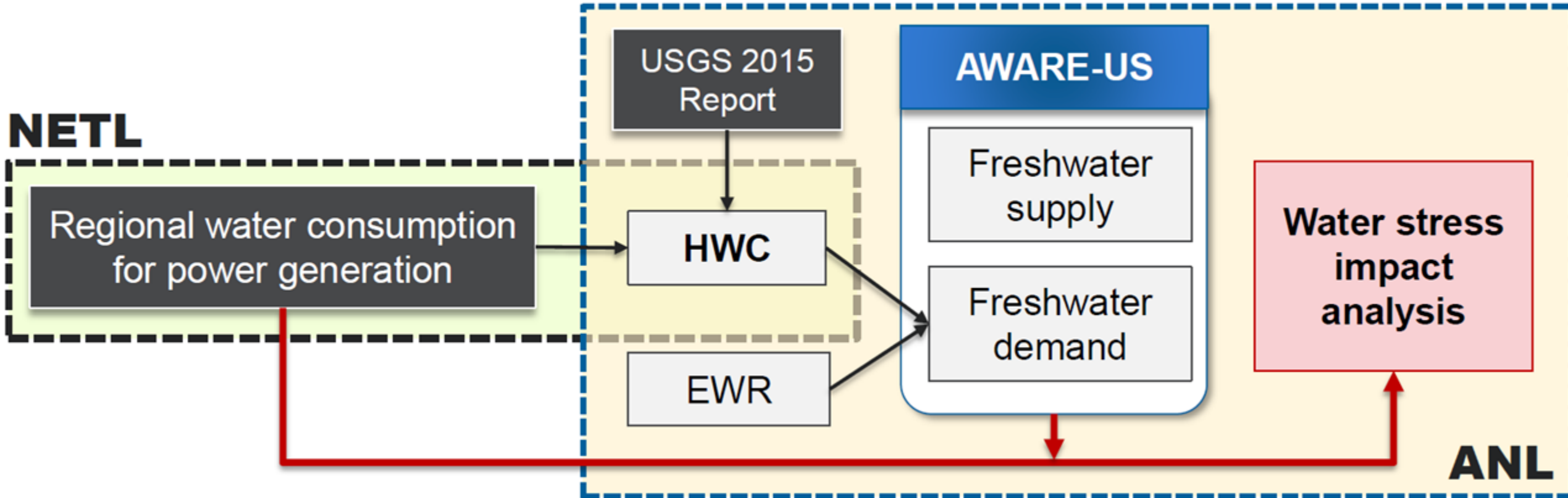
Water Scarcity Footprint

$$[Water\ scarcity\ footprint]_i (m^3 eq.) = [Water\ consumption]_i (m^3) \times [AWARE\ CF]_i$$



Lee, Uisung, et al. "AWARE-US: Quantifying water stress impacts of energy systems in the United States." *Science of the total environment* 648 (2019): 1313-1322.

Collaboration with NETL and ANL



Human Water Consumption (HWC)

Environmental Water Requirement (EWR) is the amount of water required to sustain a riverine ecosystem.

AWARE-US

Water Stressed Counties

- Developed by Argonne National Lab(ANL)

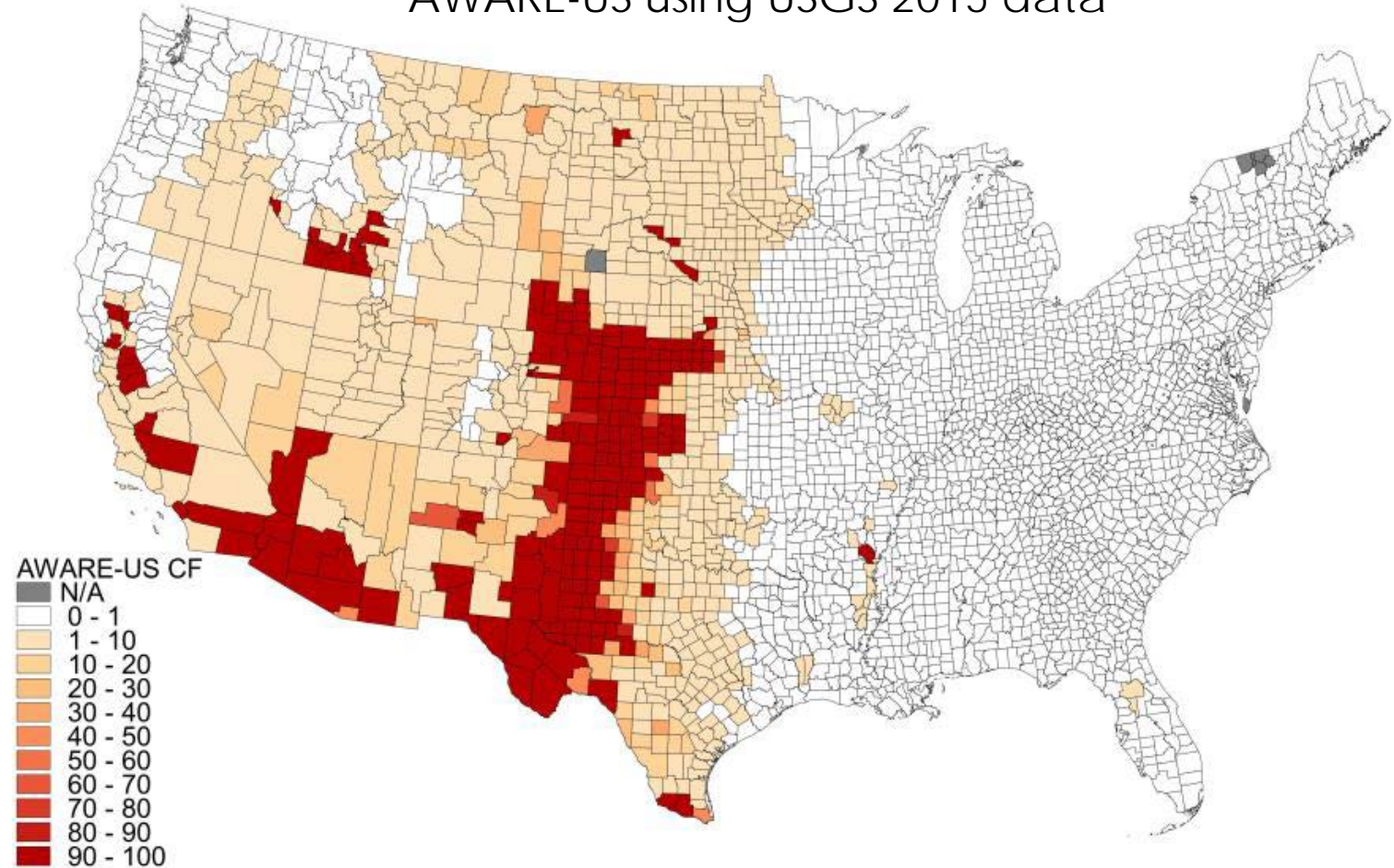
- Builds off Available Water Remaining (AWARE)

- Watershed Level

- AWARE-US

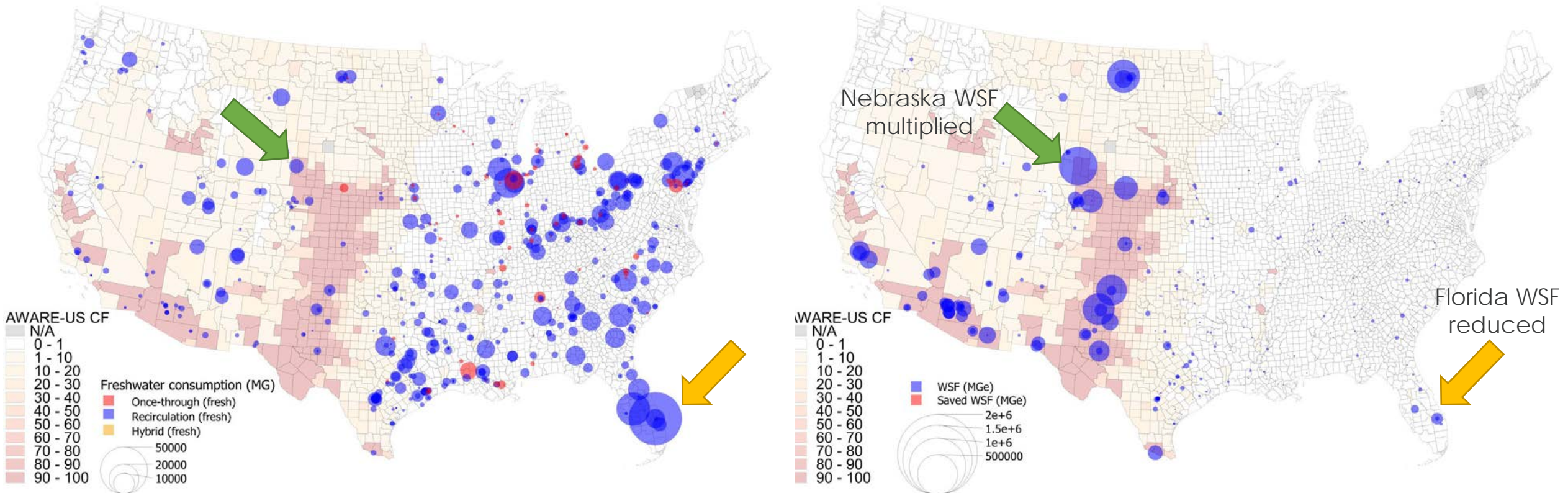
- County level detail in the contiguous US
- Focus on impacts from energy systems

AWARE-US using USGS 2015 data



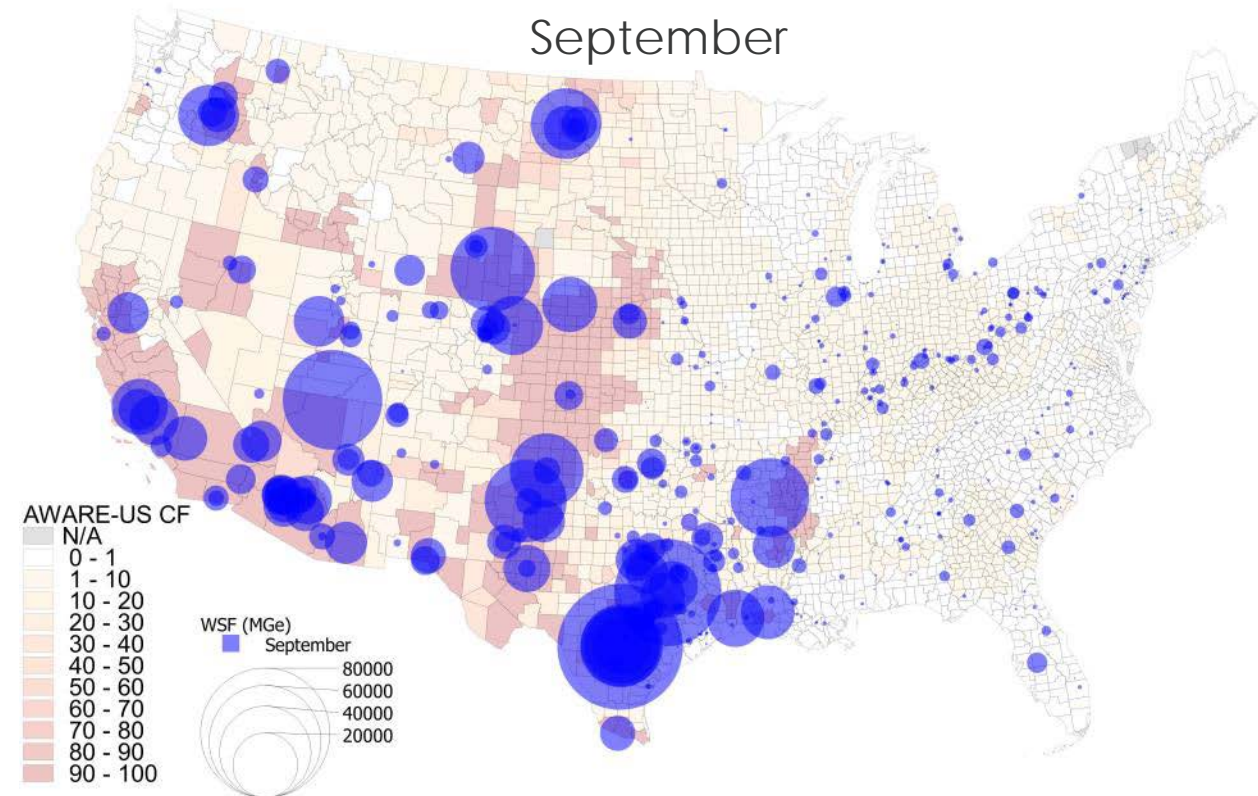
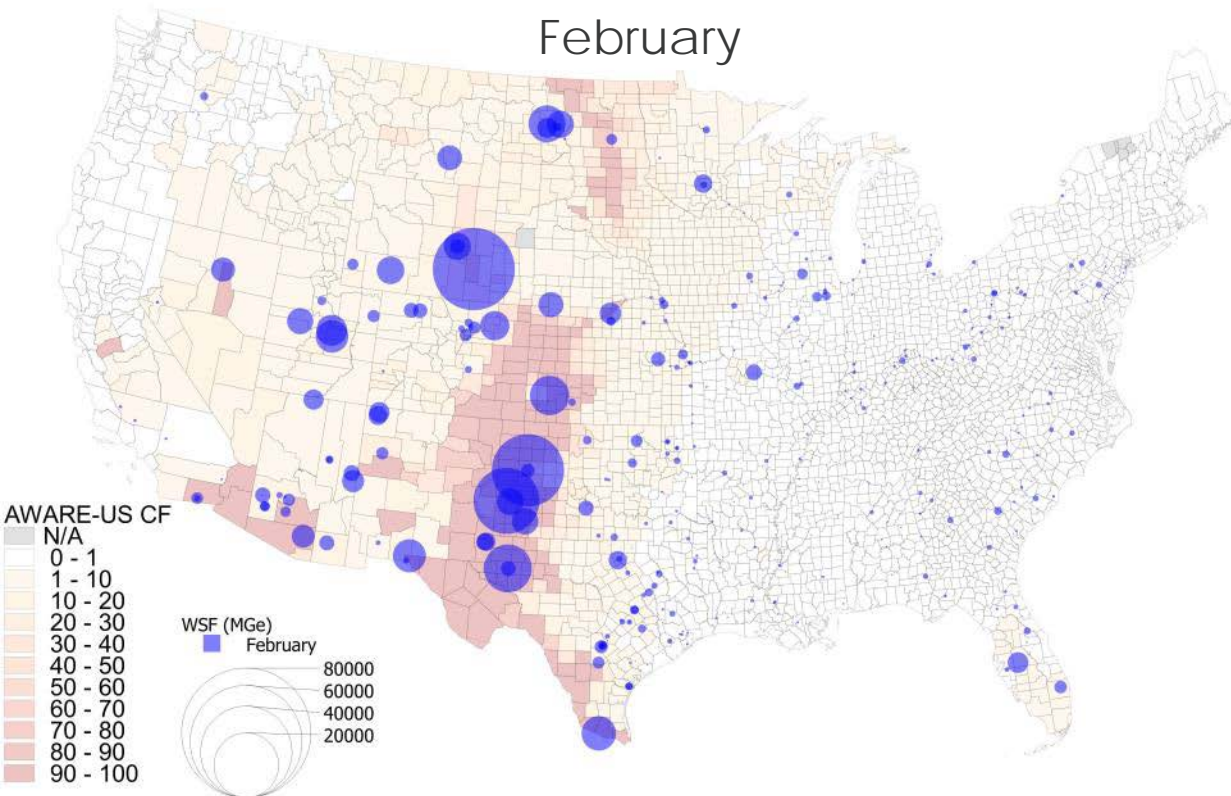
Water Scarcity by AWARE-US

- Thermoelectric Cooling Consumption (Left) vs. Water Scarcity Footprint (WSF) (Right)
- Large WSFs due to thermoelectric demands are located where AWARE-US is high



NETL Data with AWARE-US

- Seasonal variation in Water Scarcity Footprints (WSF) using AWARE-US Characterization Factors (CF)
- Impacts from thermoelectric cooling water use change significantly based on scarcity



Highlights

- **Used python to efficiently process the EIA datasets**
 - Easily evaluate any year
 - Reduces processing error and time
- **Scrubbed monotype plant data used to replace outlier values for multitype plants**
- **Water consumption for NETL data falls within expected ranges**
 - Sorted by cooling technology
 - Normalized per MWh basis

- Continue to analyze data
 - Work in parallel with ANL for feedback on data analysis
 - Explore outliers in NETL and USGS dataset
 - Further refine outlier analysis for EIA/NETL dataset

References

Dieter, C. A., Maupin, M. A., Caldwell, R. R., Harris, M. A., Ivahnenko, T. I., Lovelace, J. K., ... & Linsey, K. S. (2018). Estimated use of water in the United States in 2015 (No. 1441). US Geological Survey.

Lee, U., Xu, H., Daystar, J., Elgowainy, A., & Wang, M. (2019). AWARE-US: Quantifying water stress impacts of energy systems in the United States. *Science of the total environment*, 648, 1313-1322.

Macknick, J., Newmark, R., Heath, G., Hallett, K. 2011. A Review of Operational Water Consumption and Withdrawal Factors for Electricity Generating Technologies, Technical Report NREL/TP-6A20-50900 (Accessed Nov. 13, 2018).

Shuster, Erik (2010). *Coal Cooling Systems EV Link(5)*. [Microsoft Excel spreadsheet]. Pittsburgh: NETL.

United States Energy Information Administration (EIA) (2016). Form EIA-860 detailed data. *Electricity*. <http://www.eia.gov/electricity/data/eia860>.

United States Energy Information Administration (EIA) (2016). Form EIA-923 detailed data. *Electricity*. <http://www.eia.gov/electricity/data/eia923>.