

# Employment Opportunities

at the National Energy Technology Laboratory



NETL offers employment opportunities to people who are eager to develop and implement advanced technologies that use resources more efficiently and provide short- and long-term solutions to energy and environmental problems. All employment opportunities with NETL can be found at this website: <https://www.netl.doe.gov/careers>.

---



# FAQ's



## Federal Employment Opportunities FAQ's:

---

**Q: Is US citizenship required?**

**A: Yes. US citizenship is required for all federal vacancies.**

**Q: Am I eligible to apply for the All Sources, the Government-Wide, or should I apply for both announcements?**

**A: All Sources: These vacancies are open to any US citizen or applicant eligible under the Government-wide area of consideration.**

**Government-Wide: These vacancies are only open to Federal career/career conditional employees in the competitive service and Veterans who have preference eligibility or who have been separated from the Armed Forces under honorable conditions after substantially completing an initial 3-year term.**

**Q: How will I know if I am eligible to apply for the position?**

**A: Read the entire announcement with particular emphasis on all topics up to "HOW YOU WILL BE NOTIFIED ABOUT THE STATUS OF YOUR APPLICATION"**

**Q: How do I find information about this position?**

**A: Check the "DUTIES AND RESPONSIBILITIES" section.**

**Q: Am I qualified for the position?**

**A: Check the "QUALIFICATION REQUIREMENTS" section.**

**Q: Can I submit one application for a position advertised under two "Areas of Consideration"?**

**A: If you are eligible to apply for two areas of consideration, you need to submit an application package for each vacancy announcement number.**

**Q: What are QUALITY RANKING FACTORS?**

**A: Quality ranking factors help subject matter experts determine your level of experience, education and training in areas of importance to the job you are being considered for. Failure to submit responses can result in a lower rating of your application.**

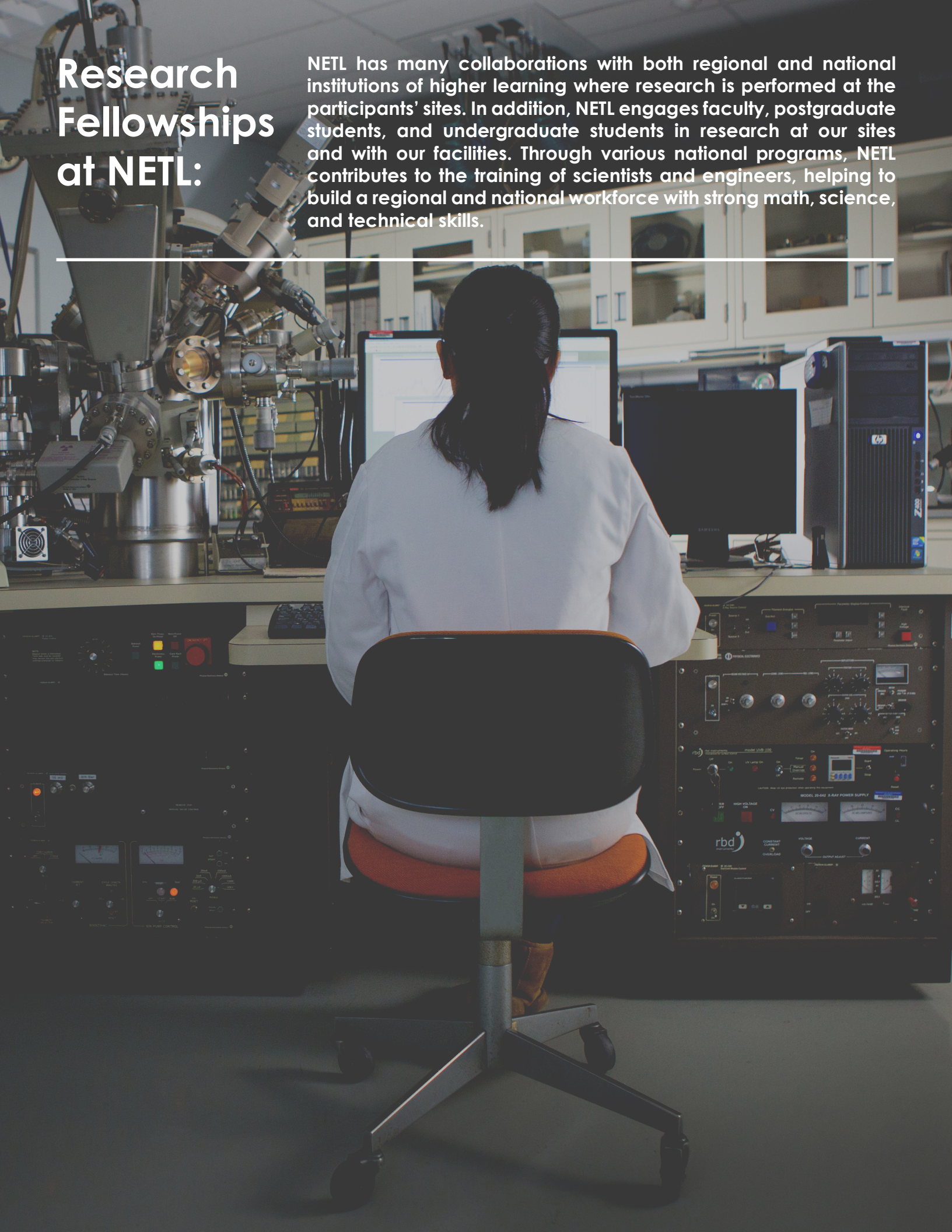
**Q: Is there a person I can contact to answer questions?**

**A: Call or email the point of contact identified under "TO APPLY" section.**

# Research Fellowships at NETL:

---

NETL has many collaborations with both regional and national institutions of higher learning where research is performed at the participants' sites. In addition, NETL engages faculty, postgraduate students, and undergraduate students in research at our sites and with our facilities. Through various national programs, NETL contributes to the training of scientists and engineers, helping to build a regional and national workforce with strong math, science, and technical skills.



## COMPUTATIONAL SCIENCES GRADUATE FELLOWSHIP



NETL is a host site for the Department of Energy, Office of Science, Computational Science Graduate Fellowship program. The CSGF provides outstanding benefits and opportunities to students pursuing doctoral degrees in fields that use high-performance computing to solve complex science and engineering problems. In addition to a yearly stipend, tuition, and a yearly academic allowance, this program also includes a twelve-week practicum experience at a DOE national laboratory. The practicum provides a unique research experience for DOE CSGF fellows to work in a DOE laboratory with some of the most respected scientists in the world. This experience offers the fellows insight into how their scientific interests can translate to research areas important to the nation. *For more information, including eligibility requirements and application deadlines, please visit this website:*

<https://www.krellinst.org/csgf/>.

---

## OFFICE OF SCIENCE GRADUATE STUDENT RESEARCH (SCGSR) PROGRAM



NETL participates in the Office of Science Graduate Student Research (SCGSR) program. SCGSR provides supplemental awards to outstanding U.S. graduate students to conduct part of their graduate thesis research at a DOE national laboratory in collaboration with a DOE laboratory scientist for a period of 3 to 12 consecutive months. The supplemental award covers additional, incremental costs for living and travel expenses directly associated with conducting the SCGSR research project at the DOE host laboratory during the award period. *For more information, please visit this website:*

<https://science.energy.gov/wdts/scgsr/>.

---

## ORISE



The National Energy Technology Laboratory's (NETL) ORISE program is administered by Oak Ridge Associated Universities and provides opportunities for undergraduate students, recent graduates, graduate students, postdoctoral researchers, and faculty researchers to perform energy-related research at NETL. Positions are located at one of NETL's three research locations in Albany, OR; Morgantown, WV; and Pittsburgh, PA. To complement NETL's mission, the ORISE program helps to ensure that NETL has a robust supply of scientists and engineers to meet our future science and technology needs. *For more information, including eligibility requirements and application deadlines, please visit this website: <http://www.ornl.gov/netl/>.*

---

## MICKEY LELAND FELLOWSHIP (MLEF) Program



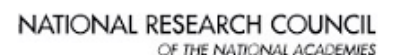
The Mickey Leland Energy Fellowship (MLEF) Program provides college students who are pursuing science, technology, engineering and math (STEM) degrees the opportunity to gain real-world experience with the Department of Energy (DOE) Office of Fossil Energy. The 10 week summer program helps participants develop research skills and increase awareness of the DOE mission to help our nation meet the energy challenges of the future. The goal of the program is to provide opportunities for underrepresented students in the STEM fields, however, all eligible candidates are encouraged to apply. Selected applicants will train under the mentorship of scientists, engineers and program officials while working on focused research projects. Since the program's inception, the MLEF has provided valuable research opportunities and experience to over 650 students.

*For more information, including eligibility requirements and application deadlines, please visit this website:*

[www.energy.gov/fe/mickey-leland-energy-fellowship](http://www.energy.gov/fe/mickey-leland-energy-fellowship).

---

## NRC RESEARCH ASSOCIATE



The NRC Research Associateship Program (RAP) offers graduate level and post-doctoral opportunities. In this program, prospective applicants select a research project or projects from among a group of opportunities listed on the RAP website. Prior to completing an application, prospective applicants are advised to contact the proposed Research Adviser to assure that funding will be available if their application is recommended by NRC panels. Once mutual interest is established between a prospective applicant and a Research Adviser, an application is submitted through the NRC WebRap system. *For more information, including eligibility requirements and application deadlines, please visit the NRC WebRap system at this website: <http://nrc58.nas.edu/raplalab10/opportunity/program.aspx?labCode=49>.*

---

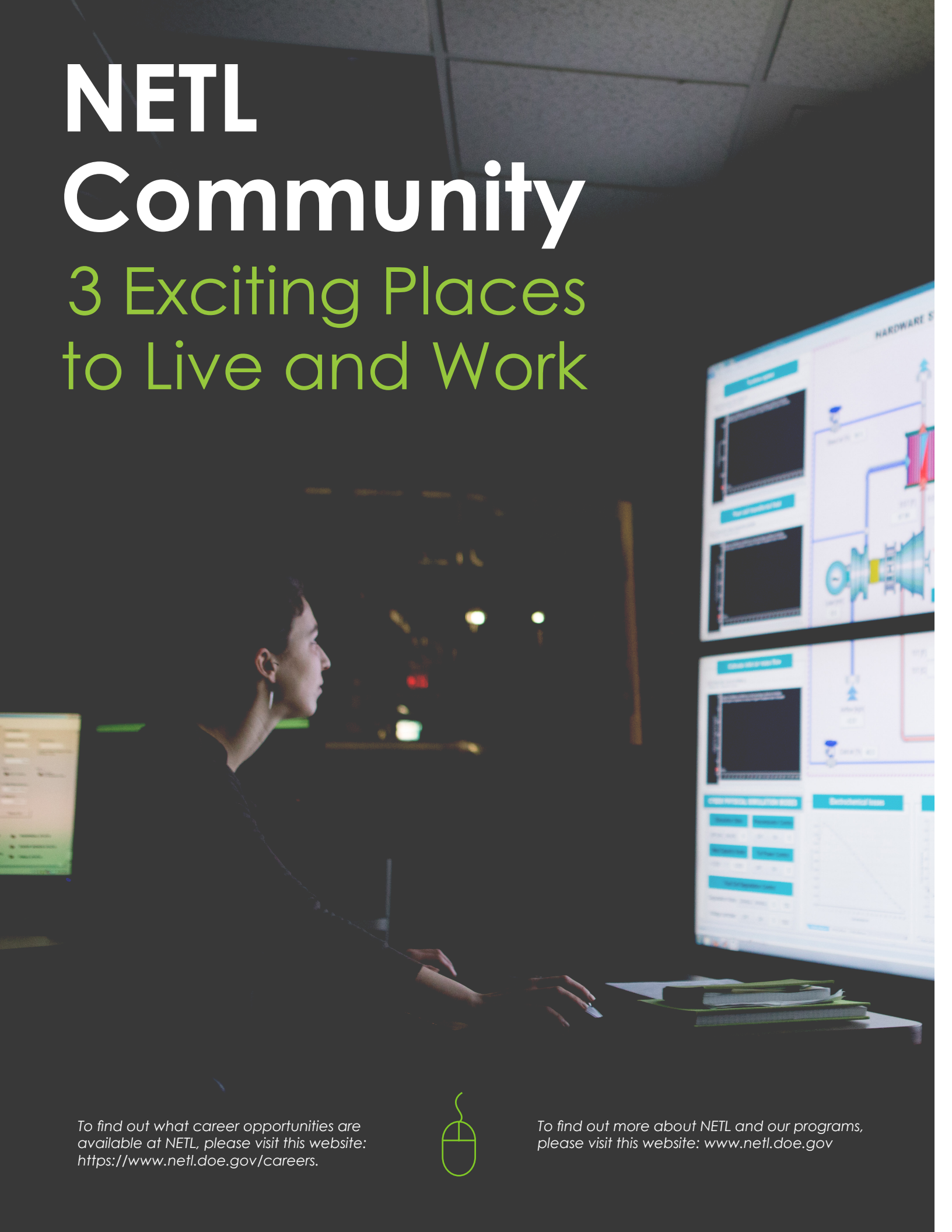
## PATHWAYS INTERN PROGRAM

The intern program allows students taking at least a half-time course load in an accredited high school, home schooling program, technical school, vocational school, two- or four- year college or university, or graduate or professional school to be part of a cooperative-learning environment. The program offers flexible work schedules, competitive pay, and the ability to gain experience while still completing your academic pursuits. *To view our current Pathways opportunities, please visit:*

[www.energy.gov/jobs/search](http://www.energy.gov/jobs/search).

# NETL Community

## 3 Exciting Places to Live and Work



To find out what career opportunities are available at NETL, please visit this website: <https://www.netl.doe.gov/careers>.



To find out more about NETL and our programs, please visit this website: [www.netl.doe.gov](http://www.netl.doe.gov)

## Morgantown, WV

The Morgantown site is located on the northern edge of Morgantown, West Virginia, five miles south of the Pennsylvania border. Morgantown is recognized as one of the best small cities in the United States, with world-class health care, education, recreation, and art facilities and a strong business community. Morgantown is home to West Virginia University, a land-grant institution that includes Medical and Law Schools; the National Institute for Occupational Safety and Health; and Mylan Pharmaceuticals. Outdoor recreation abounds--fishing, hiking, skiing, hunting, white-water rafting, mountain biking, and camping opportunities are within a short drive. Additionally, the university sponsors a variety of civic and cultural activities.

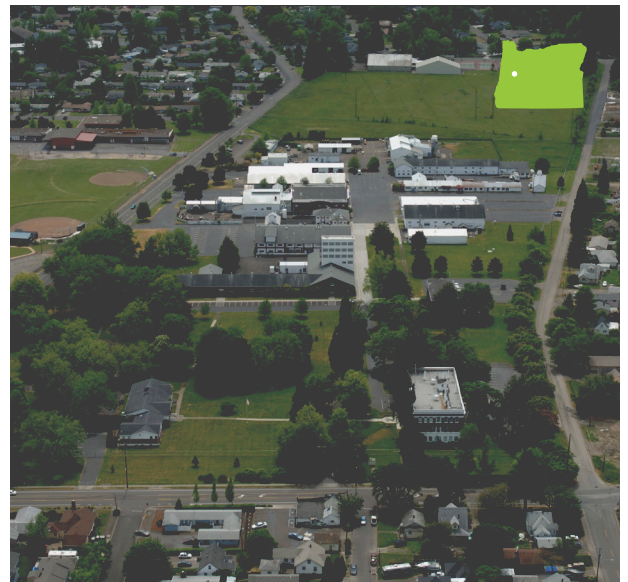


## Pittsburgh, PA

The Pittsburgh site is located approximately 10 miles south of the city of Pittsburgh in Allegheny County and borders Washington County. Pittsburgh, the nation's largest inland port, has been rated as one of the top 10 major metropolitan areas in the United States in terms of livability. The cost of living is one of the lowest in the Nation. A full range of civic, cultural, and recreational activities, leading-edge medical centers, terrific shopping, and a rich history make the area a great place to live and work. Pittsburgh is home to three professional sports teams--Pirates, Steelers, and Penguins. Twenty-nine colleges and universities serve the southwestern Pennsylvania area, including the University of Pittsburgh, Carnegie-Mellon University, and Duquesne University.

## Albany, OR

The Albany site is located in Albany, Oregon, a thriving community of business, industry and agriculture in the middle of the fertile Willamette Valley. Albany is known as the reactive metals capital of the world, due to the number of companies that produce zirconium, hafnium, and titanium. Farmers in the surrounding areas grow crops like corn, beans, mint, hazel nuts, and grass seed. Albany is credited by historians and architects with having the most varied collection of historic buildings in Oregon. Four Albany Historic Districts are listed in the National Register of Historic Places. It is also home to museums, antique shops and over 700 historic buildings and is an experience rich in pioneer history and charm. Oregon State University and the University of Oregon are within a 40-mile radius of Albany, along with several smaller community colleges and universities.





626 Cochran Mill Road  
P.O. Box 10940  
**Pittsburgh, PA** 15236-0940  
412.386.4687

3610 Collins Ferry Road  
P.O. Box 880  
**Morgantown, WV** 26507-0880  
304.285.4764

1450 Queen Avenue SW  
**Albany, OR** 97321-2198  
541.967.5892

VISIT US AT: [www.NETL.DOE.gov](http://www.NETL.DOE.gov)



@NationalEnergyTechnologyLaboratory



@NETL\_DOE



@NETL\_DOE