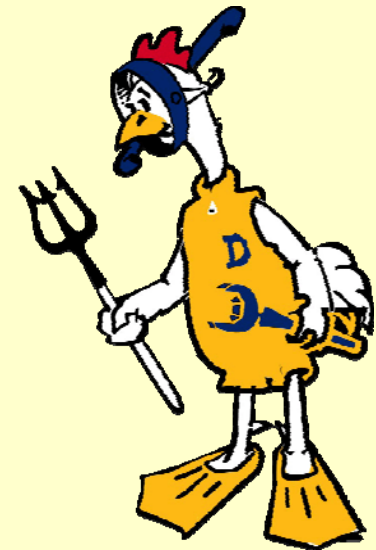
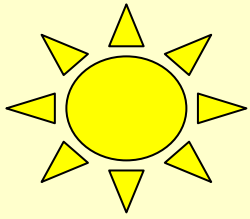


# Characterization of Methane Degradation and Methane-Degrading Microbes in Alaska Coastal Waters

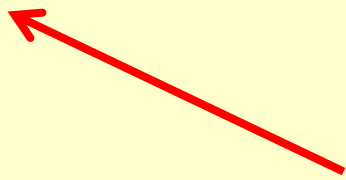
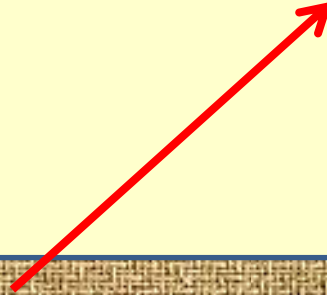
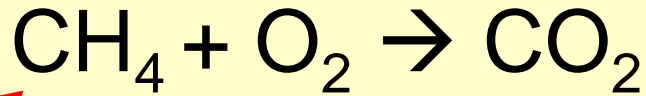
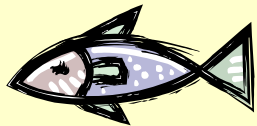
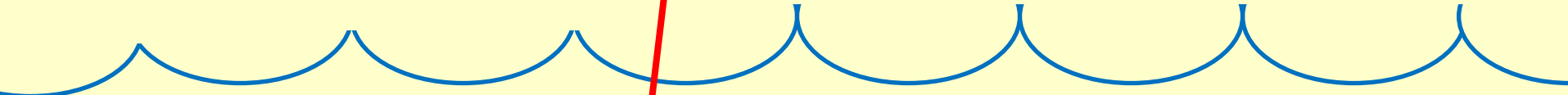
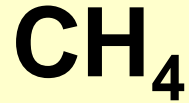
DE-NT0005666

David L. Kirchman  
College of Marine and Earth Studies  
University of Delaware  
Lewes, Delaware

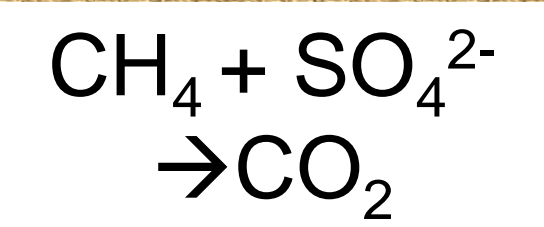




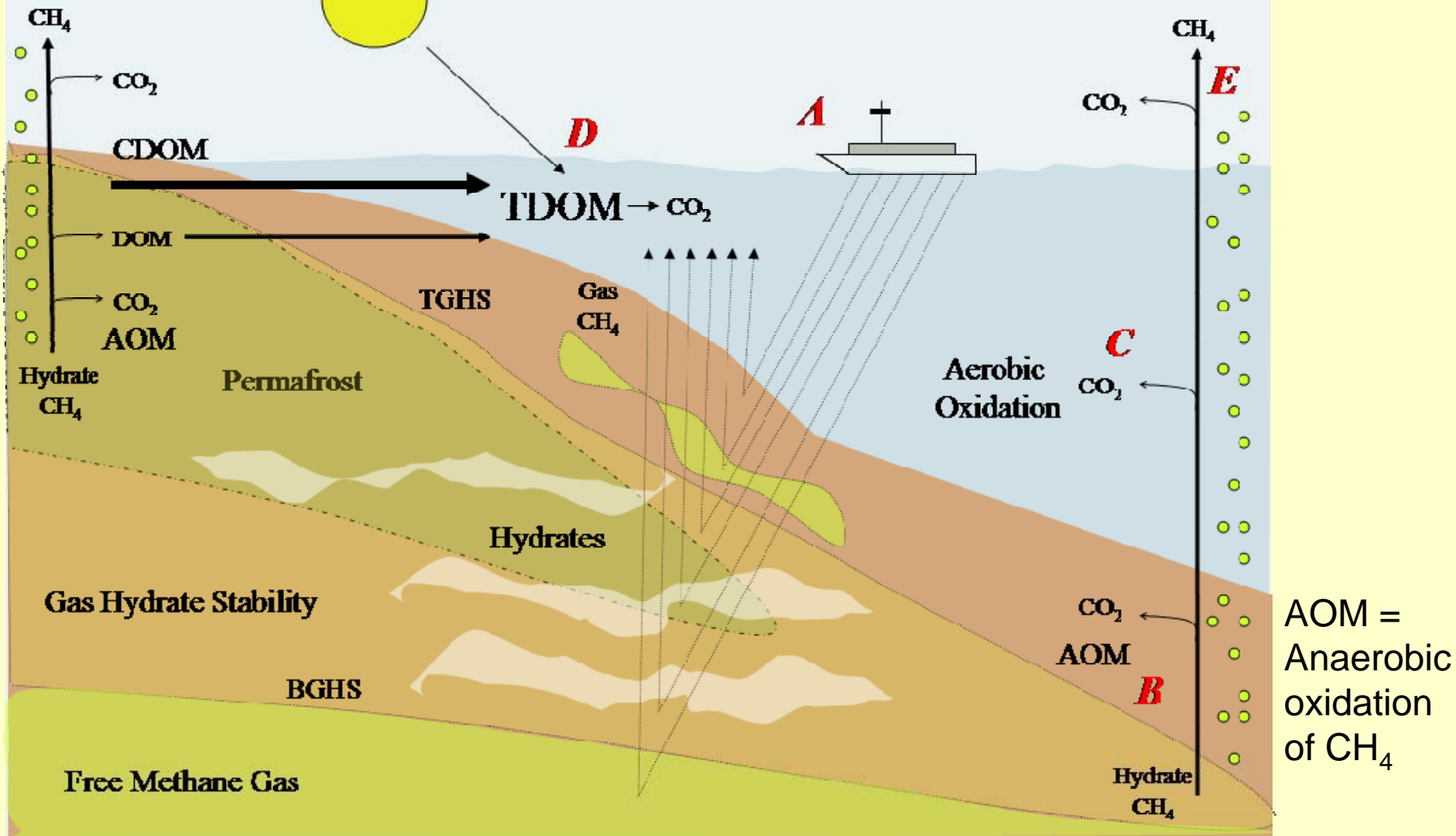
Net flux set by methane degradation by microbes



Methane hydrate

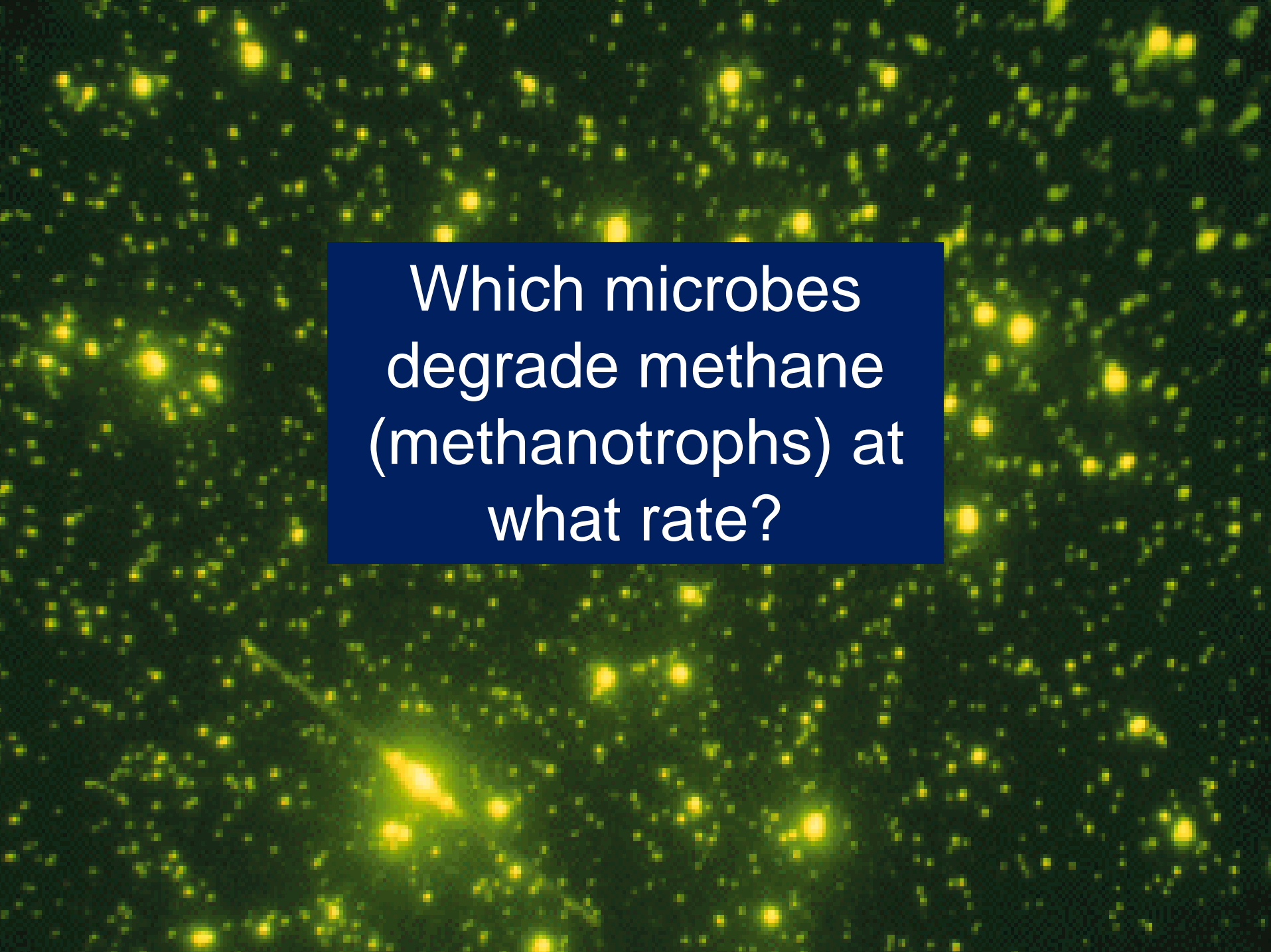


# Alaskan coastal waters



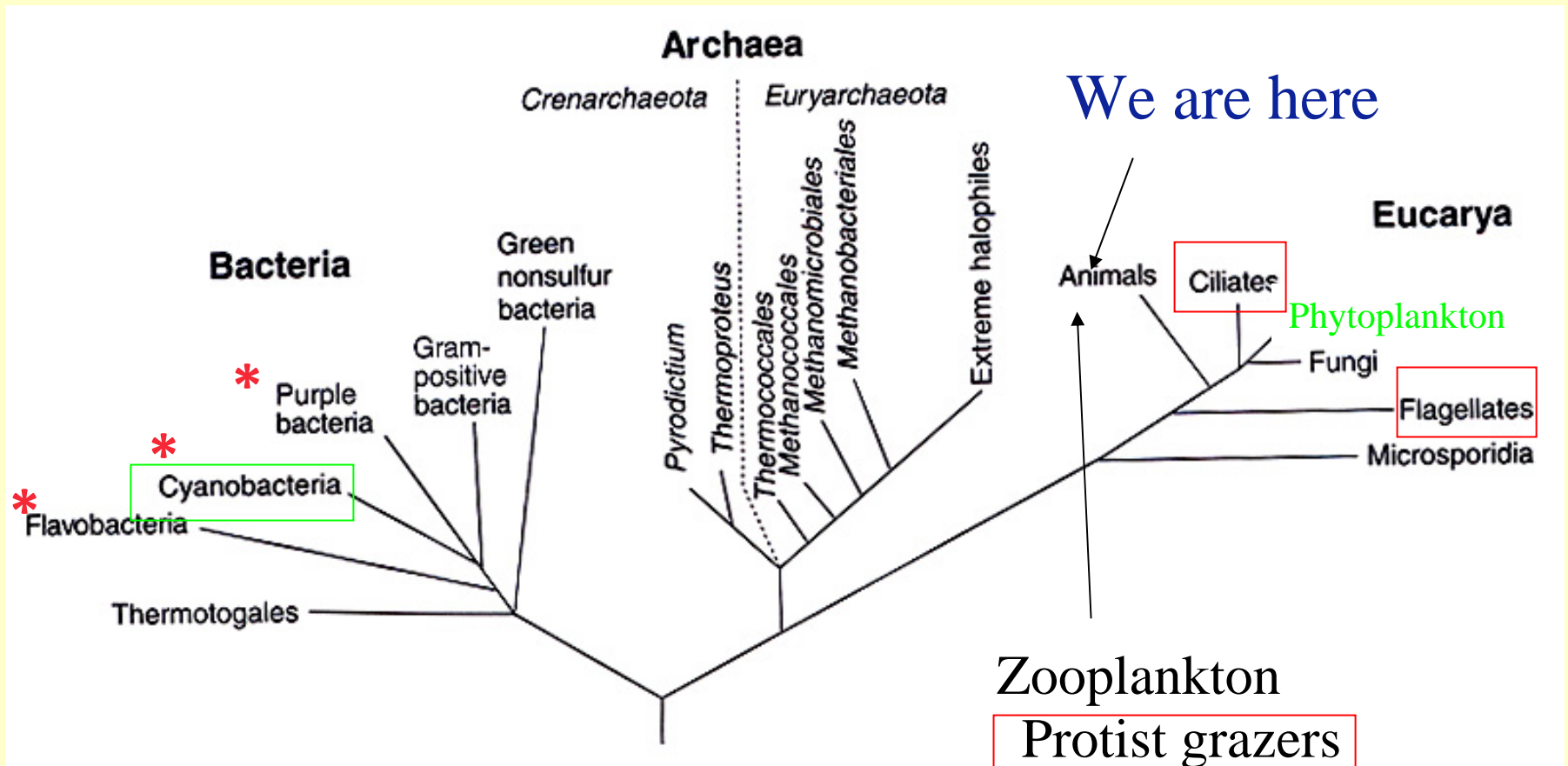
CDOM= colored dissolved organic material

GHS= gas hydrate stability



Which microbes  
degrade methane  
(methanotrophs) at  
what rate?

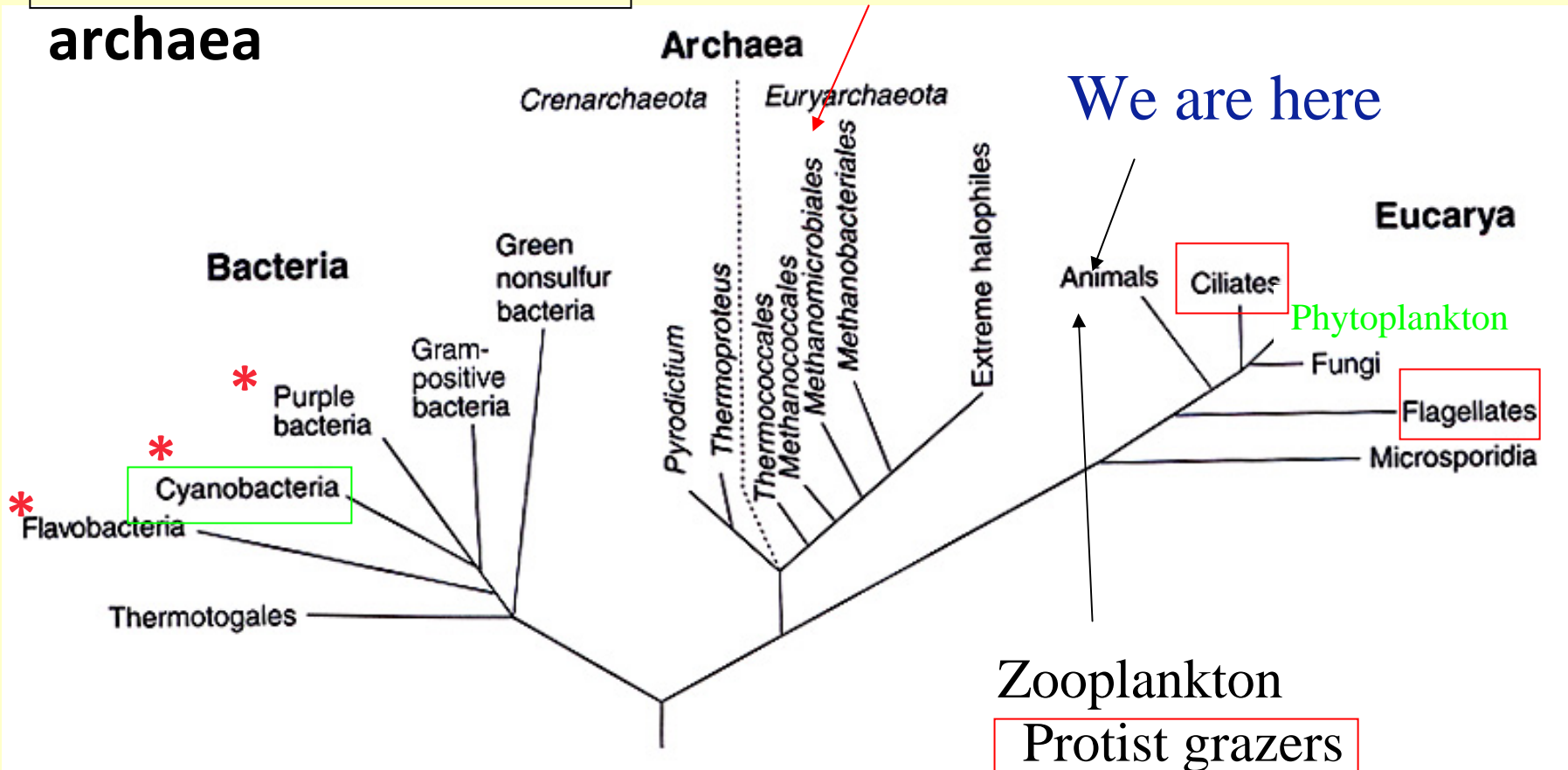
# Simple tree of life



\* Abundant groups in the ocean

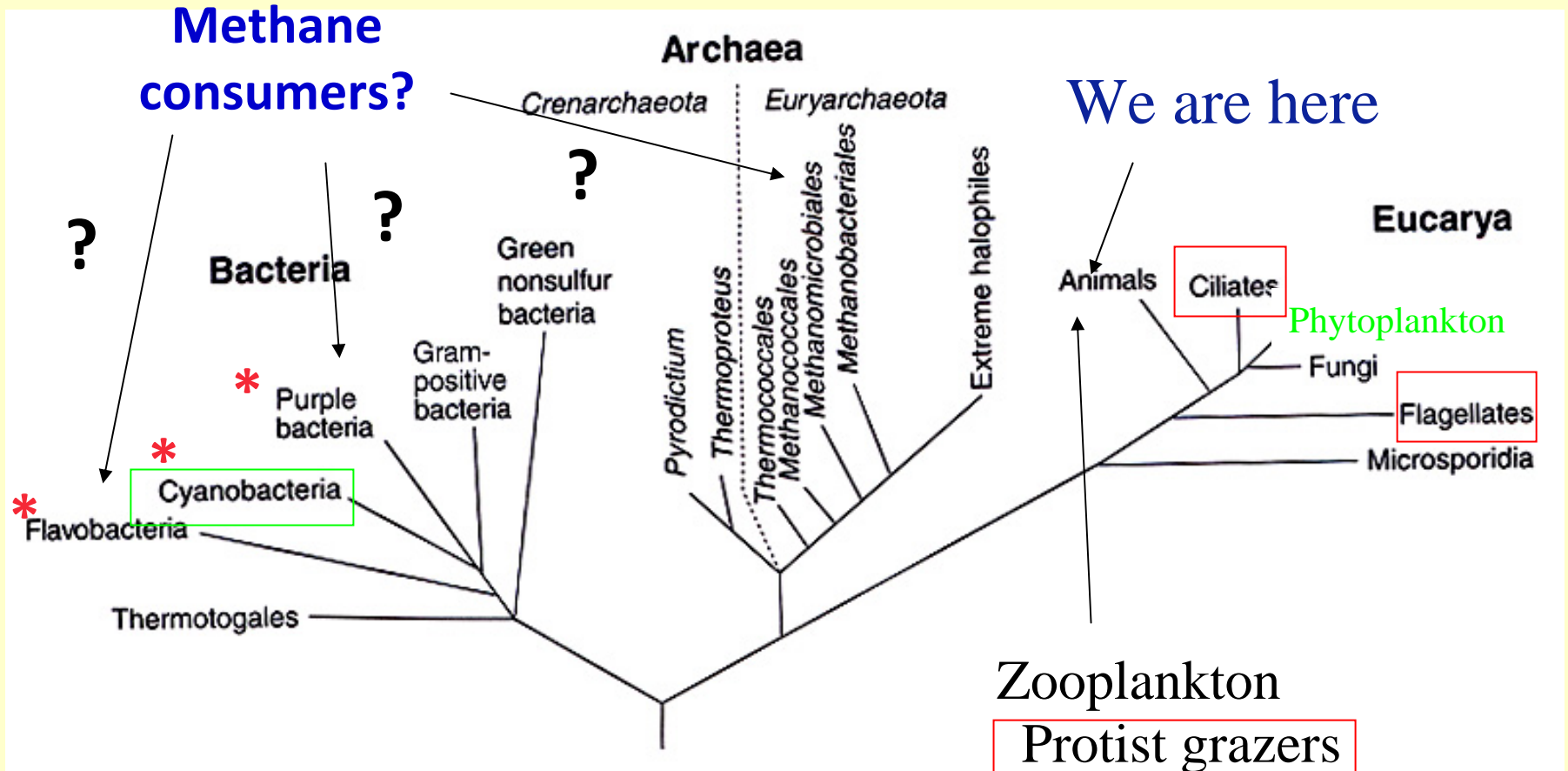
Methane is produced biogenically only by archaea

Methane producer



\* Abundant groups in the ocean

# But who are the methane consumers?



\* Abundant groups in the ocean

# Arctic Ocean Methane Hydrate Exploration: Energy and Climate Change

Cruise scheduled for August-September 2009

Richard Coffin, Naval Research Lab, Washington, DC

Jens Greinert, Royal Netherlands Institute for Sea  
Research, The Netherlands

Ingo Pecher, Heriot-Watt University, UK

Thomas Lorenson, USGS, Menlo Park, CA

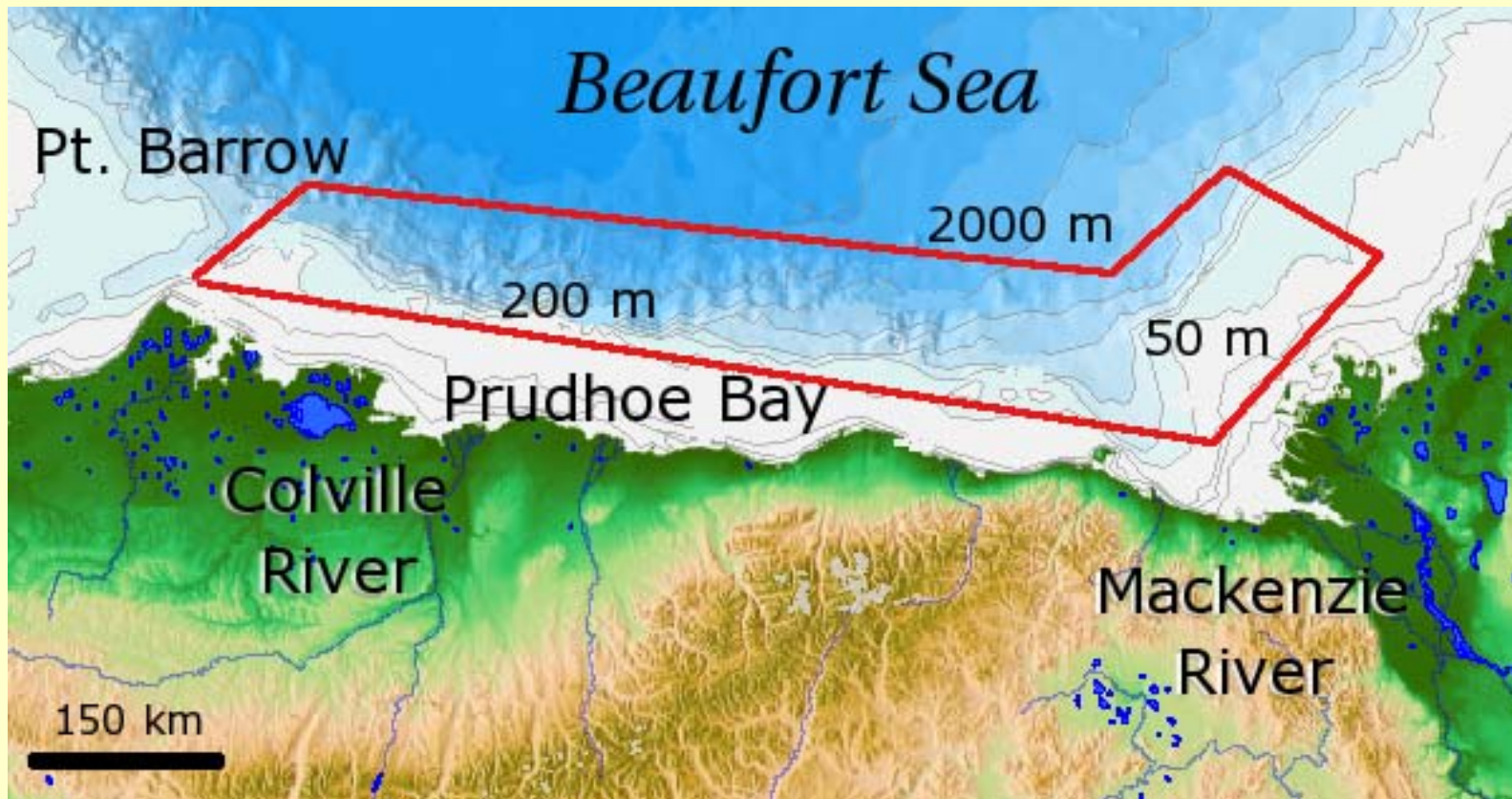


# Senior Scientists for Methane Hydrate Expedition

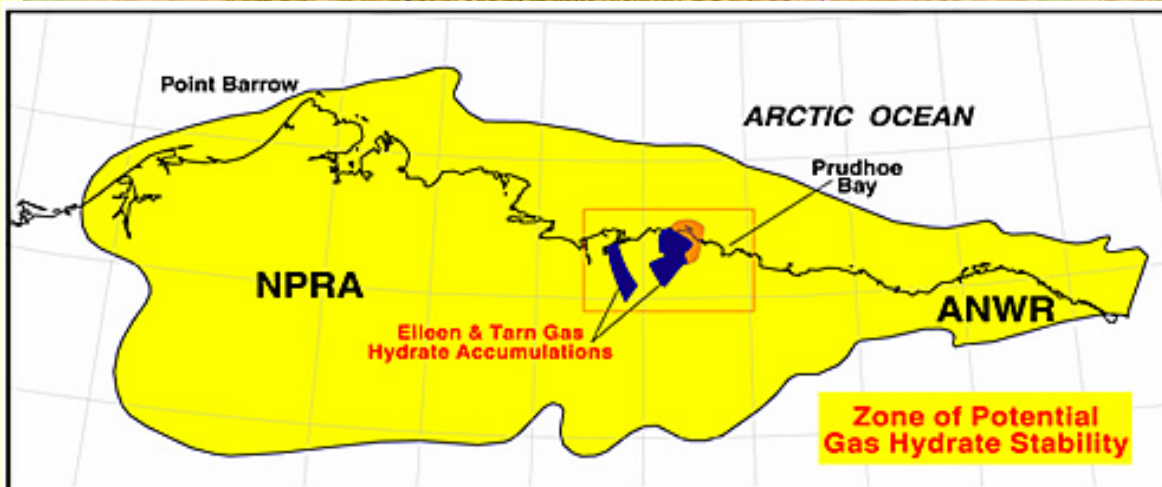
1. Thomas Bianchi, Texas A&M University, College Station, TX, USA
2. Richard Coffin, Naval Research Laboratory, Washington, DC, USA
3. Roswell Downer, Milibar Hydrotest Inc., Shreveport, LA, USA
4. Jens Greinert, University of Ghent, Ghent, Belgium; NIOZ, The Netherlands
5. Leila Hamdan, Naval Research Laboratory, Washington, DC, USA
6. David Kirchman, University of Delaware, Lewes, Delaware, USA
7. Thomas Lorenson, USGS, Menlo Park, CA, USA
8. Ingo Pecher, Heriott-Watt University, Edinburgh, Scotland
9. Christopher Osburn, North Carolina State University, Raleigh, NC, USA
10. Kelly Rose, National Energy Technology Lab, Morgantown, WV, USA
11. Joseph Smith, Naval Research Laboratory, Washington, DC, USA
12. Tina Treude, IFM-GEOMAR, Germany
13. Shari Yvon-Lewis, Texas A&M University, College Station, TX, USA
14. Warren Wood, Naval Research Laboratory, Stennis, MS, USA
15. Brandon Yoza, University of Hawaii, Honolulu, HI, USA

## Some goals and research topics

- Acquire seismic, heatflow and geochemical data for **evaluation of deep sediment hydrate distributions.**
- Estimate spatial variation in the **vertical methane diffusion** in sediment and water column.
- Develop and calibrate **models to evaluate sediment hydrate** loading, hydrate destabilization through warming, and the **fate of methane after hydrate destabilization.**
- Determine and **model the transport of methane** from the sediment through the water column into the atmosphere.
- Study the control of total methane emissions by **microbial methane consumption.**

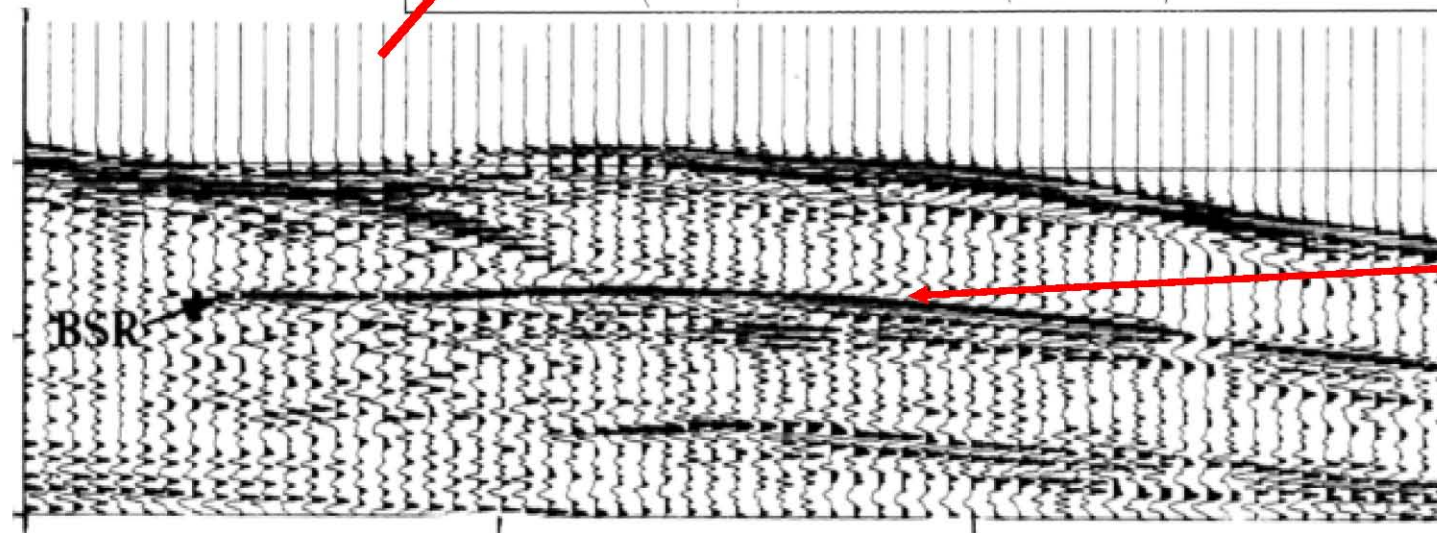
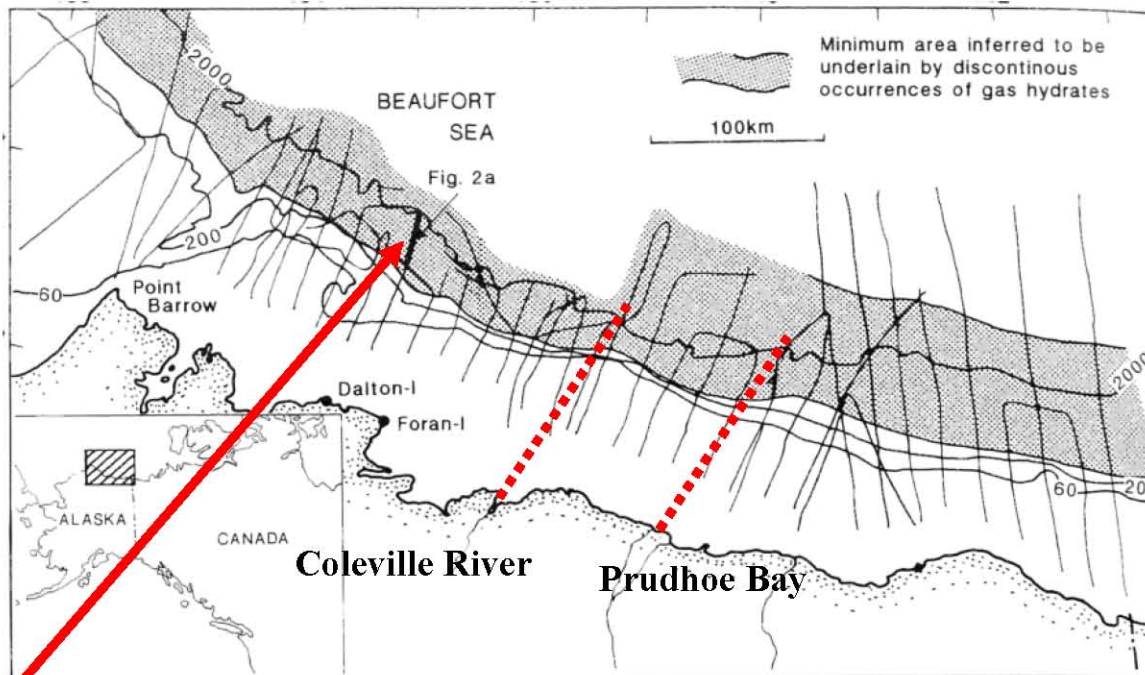


Study Area





# Existing Seismic Data



**Bottom  
Simulating  
Reflector  
Indicating  
potential gas  
hydrate beds**



Work to be  
done on the  
US Coast  
Guard ice  
breaker, **Polar  
Sea**

**399 feet**  
**25 scientists**

## **Questions to be addressed by Kirchman's group**

1. How does methane degradation depend on methane concentrations and methane hydrates?

**Measure  $^{14}\text{C}$ -methane degradation in various regions with and without methane hydrates**

# Few previous direct estimates of methane degradation

<u>Regime</u>	<u>Concentration</u> ( $\text{nmol cm}^{-3}$ )	<u>Degradation Rate</u> ( $\text{nmol cm}^{-3} \text{ d}^{-1}$ )
<b>Water column</b>		
Bering Sea	2-21	0.007-0.07
→ Chukchi Sea	0.2-1	0.04-0.3
Kara Sea	1.3-16	0.009-4.5
Barents Sea	0.05-0.15	0.0002-0.006
Skan Bay, Aleutian Is.	0-2500	0-10
<b>Sediments</b>		
Bering Sea	n.d.	0.2-117
→ Chukchi Sea	1-15	0.002-0.015
Kara Sea	10-27	0.3-222
Barents Sea	0.75-2	0.07-2.2
<b>Terrestrial</b>		
Siberia permafrost	50-1000	5-50





# Methane degradation in the coastal Chukchi Sea (Barrow, Alaska)

<u>Date</u>	<u>Uptake</u> ( <u>pmol/L/h</u> )	<u>SD</u>	<u>Respiration</u> ( <u>pmol/L/h</u> )	<u>SD</u>	<u>Uptake/</u> <u>Respiration</u>	<u>SD</u>
1/27/08	1.63	0.09	44.2	9.4	0.038	0.006
1/29/08	0.76	0.15	62.0	12.0	0.012	0.001
1/31/08	0.58	0.08	54.0	55.1	0.019	0.012
8/2/08	1.05	0.71	13.62	1.6	0.077	0.446
8/2/08	0.16	0.04	17.16	4.4	0.010	0.009
8/4/08	0.27	0.16	9.41	1.9	0.028	0.086
8/4/08	0.69	0.19	11.57	4.1	0.060	0.046
8/8/08	0.52	0.15	8.49	1.9	0.062	0.076
8/8/08	0.40	0.17	7.68	1.5	0.052	0.118

# Methane degradation in the coastal Chukchi Sea (Barrow, Alaska)

<u>Date</u>	<u>Uptake</u> ( <u>pmol/L/h</u> )	<u>SD</u>	<u>Respiration</u> ( <u>pmol/L/h</u> )	<u>SD</u>	<u>Uptake/</u> <u>Respiration</u>	<u>SD</u>
1/27/08	1.63	0.09	44.2	9.4	0.038	0.006
1/29/08	0.76	0.15	62.0	12.0	0.012	0.001
1/31/08	0.58	0.08	54.0	55.1	0.019	0.012
8/2/08	1.05	0.71	13.62	1.6	0.077	0.446
8/2/08	0.16	0.04	17.16	4.4	0.010	0.009
8/4/08	0.27	0.16	9.41	1.9	0.028	0.086
8/4/08	0.69	0.19	11.57	4.1	0.060	0.046
8/8/08	0.52	0.15	8.49	1.9	0.062	0.076
8/8/08	0.40	0.17	7.68	1.5	0.052	0.118

Uptake =  $^{14}\text{C}$   
incorporation into cells

Respiration =  
 $^{14}\text{C}$ - methane  $\rightarrow$   $^{14}\text{CO}_2$

# Methane degradation in the coastal Chukchi Sea (Barrow, Alaska)

<u>Date</u>	<u>Uptake</u> ( <u>pmol/L/h</u> )	<u>SD</u>	<u>Respiration</u> ( <u>pmol/L/h</u> )	<u>SD</u>	<u>Uptake/</u> <u>Respiration</u>	<u>SD</u>
1/27/08	1.63	0.09	44.2	9.4	0.038	0.006
1/29/08	0.76	0.15	62.0	12.0	0.012	0.001
1/31/08	0.58	0.08	54.0	55.1	0.019	0.012
8/2/08	1.05	0.71	13.62	1.6	0.077	0.446
8/2/08	0.16	0.04	17.16	4.4	0.010	0.009
8/4/08	0.27	0.16	9.41	1.9	0.028	0.086
8/4/08	0.69	0.19	11.57	4.1	0.060	0.046
8/8/08	0.52	0.15	8.49	1.9	0.062	0.076
8/8/08	0.40	0.17	7.68	1.5	0.052	0.118

# Methane degradation in the coastal Chukchi Sea (Barrow, Alaska)

Nearly 5-fold higher rates in the winter!

<u>Date</u>	<u>Uptake</u> ( <u>pmol/L/h</u> )	<u>SD</u>	<u>Respiration</u> ( <u>pmol/L/h</u> )	<u>SD</u>	<u>Uptake/</u> <u>Respiration</u>	<u>SD</u>
1/27/08	1.63	0.09	44.2	9.4	0.038	0.006
1/29/08	0.76	0.15	62.0	12.0	0.012	0.001
1/31/08	0.58	0.08	54.0	55.1	0.019	0.012
8/2/08	1.05	0.71	13.62	1.6	0.077	0.446
8/2/08	0.16	0.04	17.16	4.4	0.010	0.009
8/4/08	0.27	0.16	9.41	1.9	0.028	0.086
8/4/08	0.69	0.19	11.57	4.1	0.060	0.046
8/8/08	0.52	0.15	8.49	1.9	0.062	0.076
8/8/08	0.40	0.17	7.68	1.5	0.052	0.118

All other properties higher in summer—except methane oxidation

	<u>Summer</u>	<u>Winter</u>
Methane oxidation (pmol L <sup>-1</sup> h <sup>-1</sup> )	11.8 ± 3.6	54.3 ± 8.5
Chlorophyll (μg L <sup>-1</sup> )	1.23	0.061
Total microbes (10 <sup>9</sup> L <sup>-1</sup> )	1.12	0.55
Growth Rate (d <sup>-1</sup> )	0.0303 ± 0.0055	0.00752 ± 0.0.0032

## Questions.....

2. What is the time-dependent response of methanotrophic microbes and methane degradation to changes in methane fluxes?

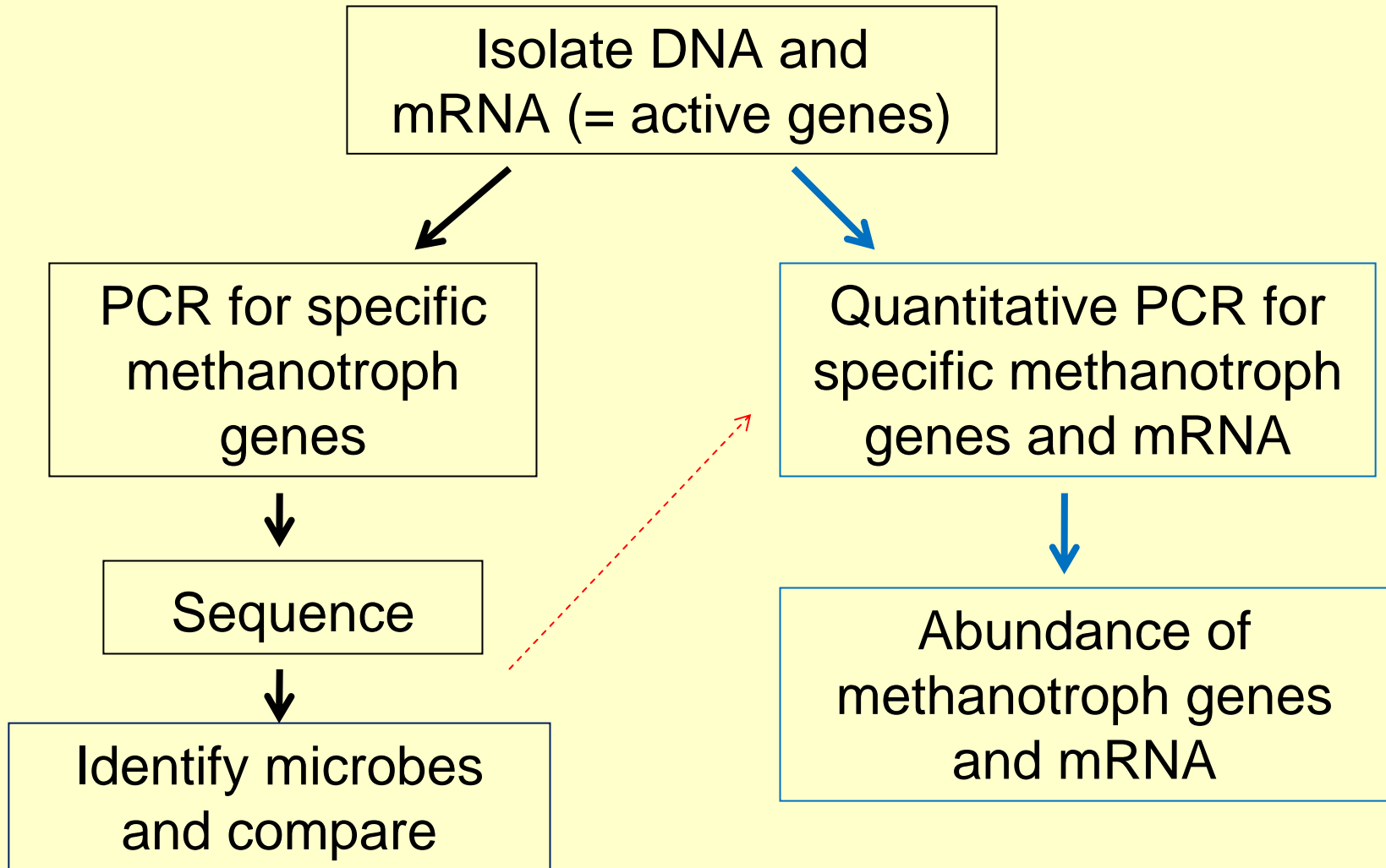
How do microbes respond to changes in methane fluxes on both short and long time scales?

**Follow degradation rates and methanotrophic genes over time (days)**

# Methanotrophic enzymes and genes

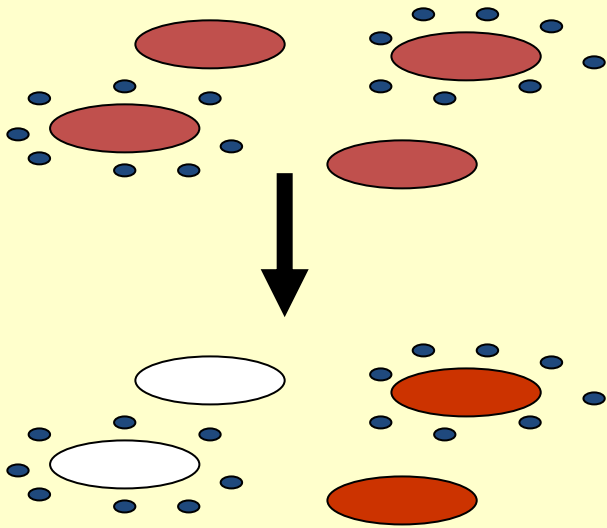
<u>Methanotrophic Process</u>	<u>Enzyme</u>	<u>Gene</u>
Aerobic	Particulate methane monooxygenase	<i>pmoA</i>
Aerobic	Soluble methane monooxygenase	<i>mmoX</i>
Aerobic	Methanol dehydrogenase	<i>mxoF</i>
Anaerobic	Methyl-coenzymeM reductase	<i>mcrA</i>

# Following methanotrophic microbes





# Microautoradiography with FISH



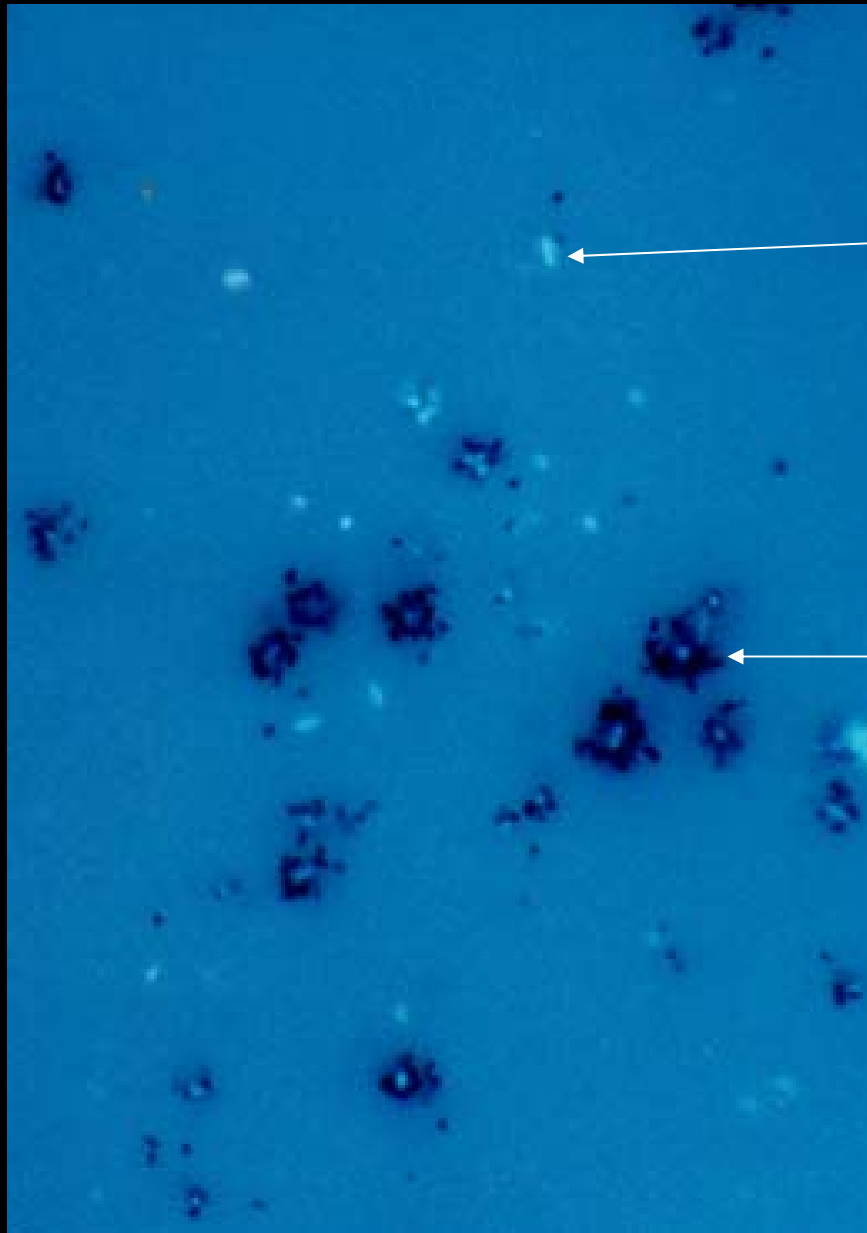
Cells radioactive from taking up  $^3\text{H}$ -organics and  $^{14}\text{C}\text{H}_4$

Identify bacteria by FISH

MAR-FISH Lee et al. (1999)

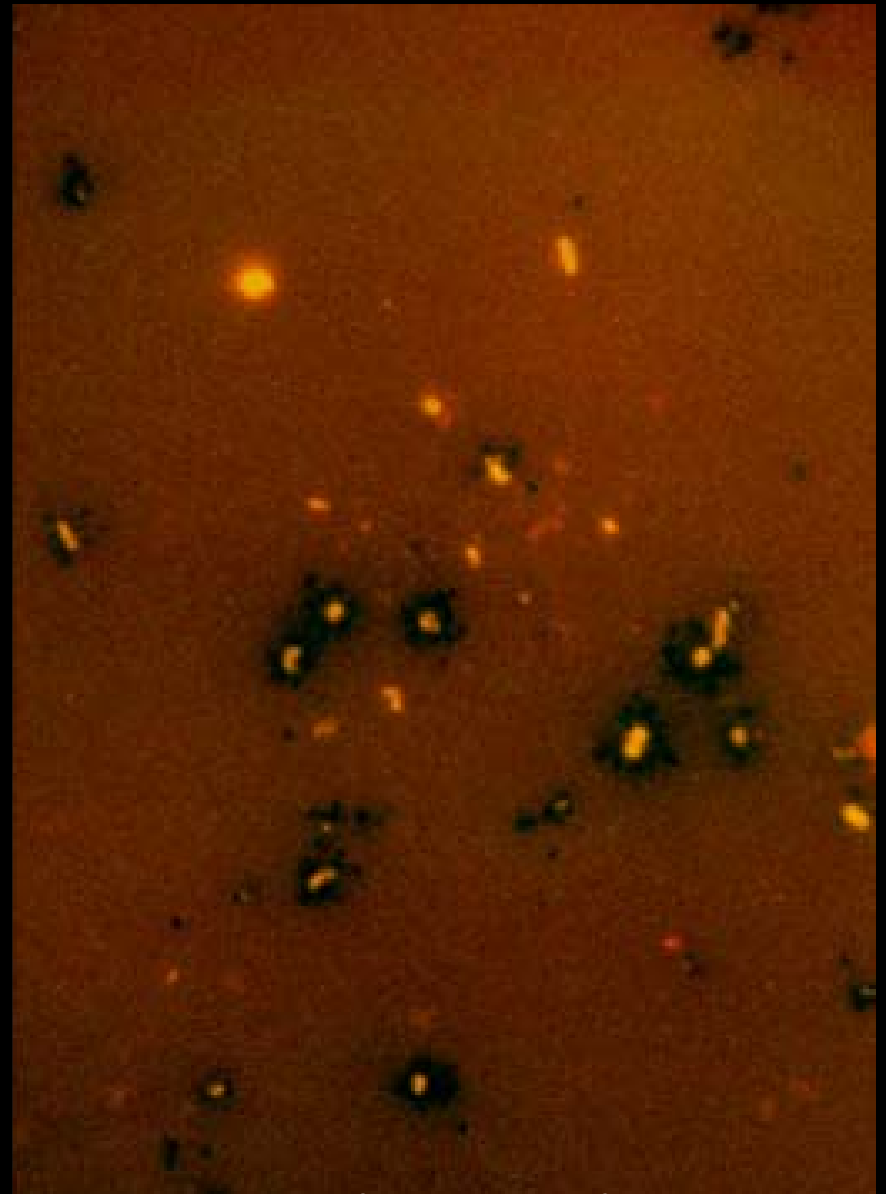
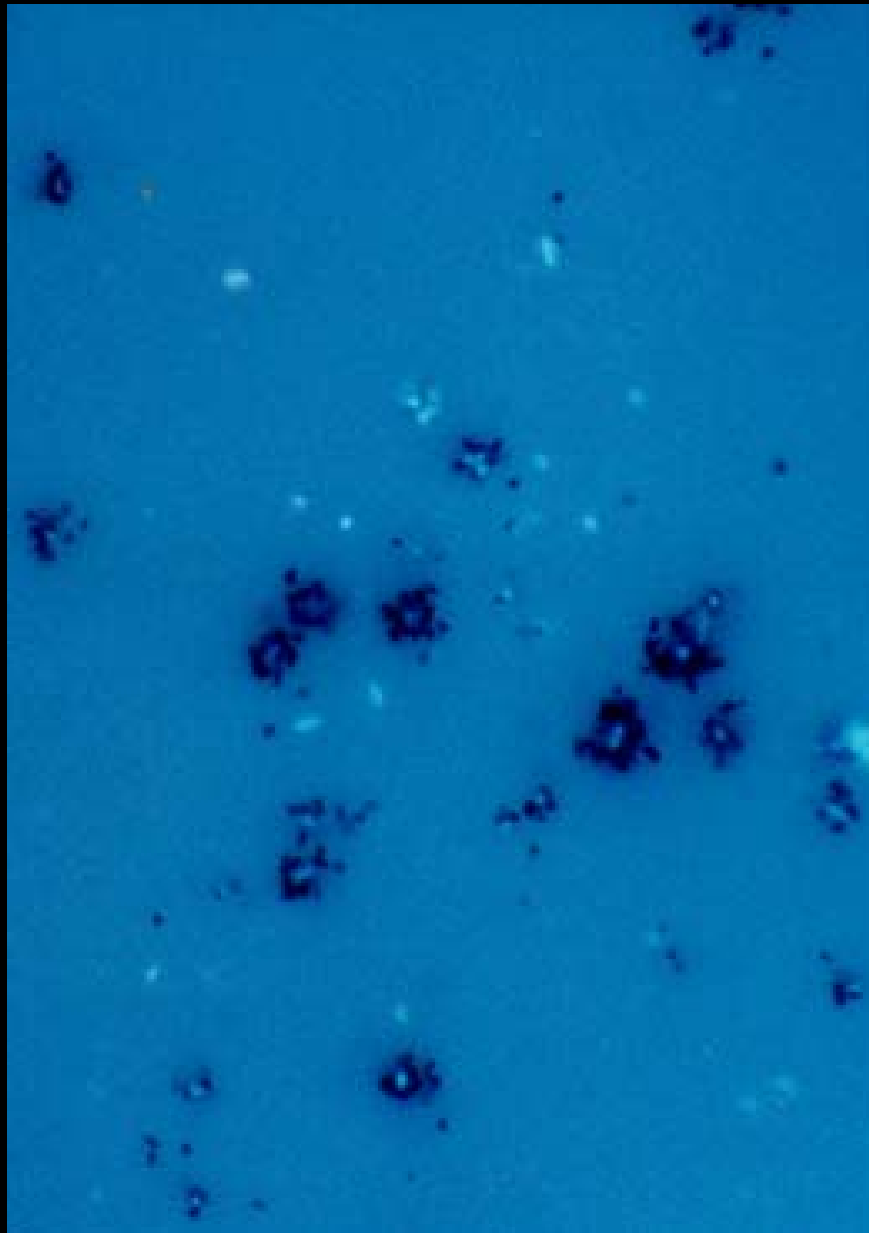
STARFISH Ouverney and Fuhrman (1999)

Micro-FISH Cottrell and Kirchman (2000)



Cells stained for DNA (0.5  $\mu\text{m}$ )

Silver grains, indicating uptake of radioactive compounds



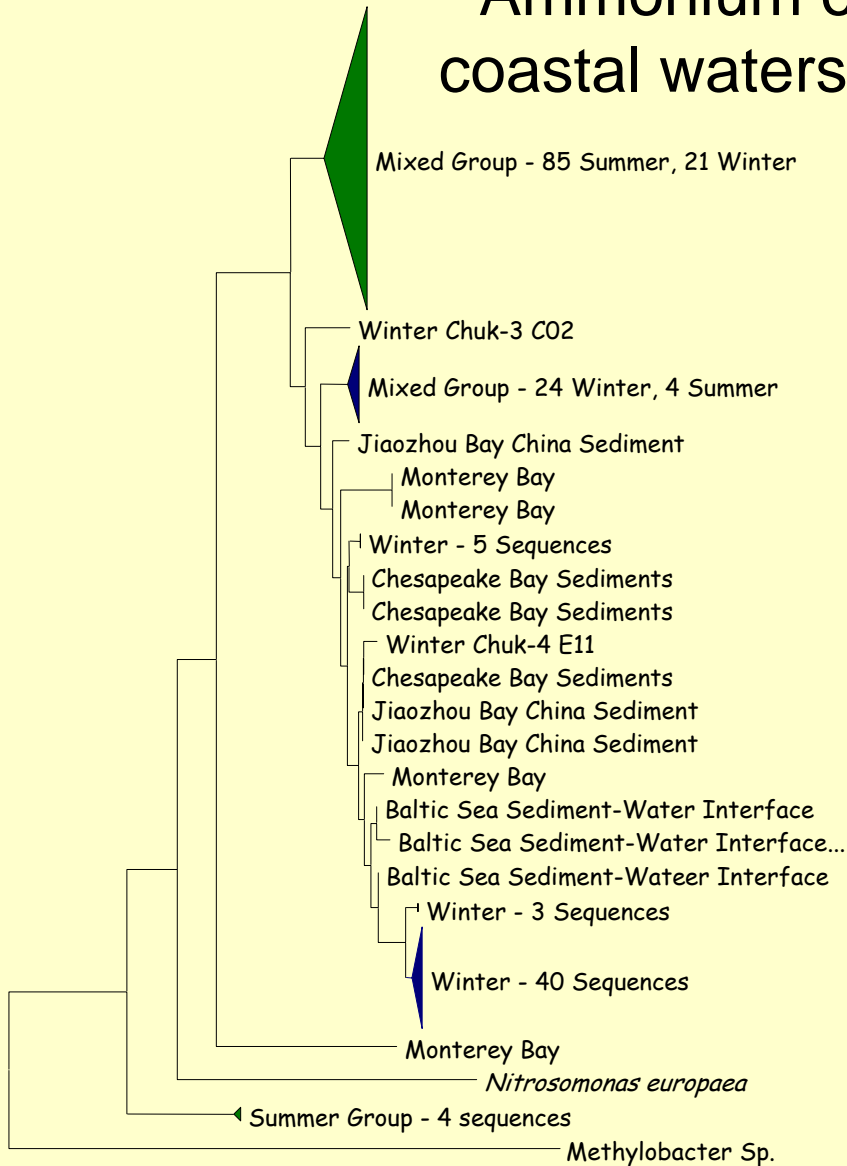
DNA probes for specific microbes

## Questions.....

3. How do methane degradation rates and key methane degradation genes (pmoA and mcrA) in the Arctic and low latitudes compare?

Are there unique “Arctic” genes?

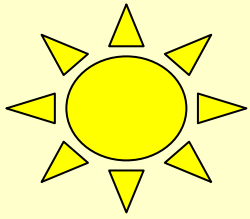
# Ammonium oxidation gene(*amoA*) in Barrow coastal waters: same as seen in lower latitudes



## Connections between ammonium and methane oxidation

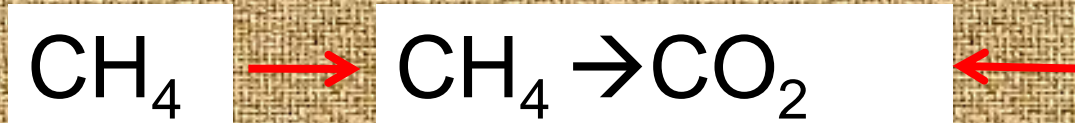
➤ Ammonium oxidizers can degrade methane (and visa versa).

➤ Key genes for both processes are similar (*amoA* and *pmoA*).



❖ What controls methane emissions to the atmosphere?

❖ How will degradation and emission rates vary in response to climate change?



Methane hydrate