

Greenhouse gas Laser Imaging Tomography Experiment (GreenLITE)

DE-FE0012574

Dr. Jeremy Dobler
Exelis, Inc.

U.S. Department of Energy
National Energy Technology Laboratory
Carbon Storage R&D Project Review Meeting
Developing the Technologies and
Infrastructure for CCS
August 12-14, 2014

Presentation Outline

- Benefits of Program
- Project Overview
- Technical Status
- Progress to Date
- Summary
- Appendix

Benefit to the Program

- Develop and validate technologies to ensure 99 percent storage permanence.
 - Our work is aimed at providing a piece of the overall system used to validate 99 percent containment for a given carbon ground storage project.
- The Exelis instrument seeks to improve worker safety, reduce environmental and economic impact, and allow for proper accounting of CO₂ flux over long-term, large scale operations. Further, the Exelis AER team seeks to accomplish this in a user-friendly, set-up-and-forget package at minimal cost to set up and only hours a month to maintain. The goals of this proposal perfectly match those of the DOE objectives outlined in section 2 of the FOA.

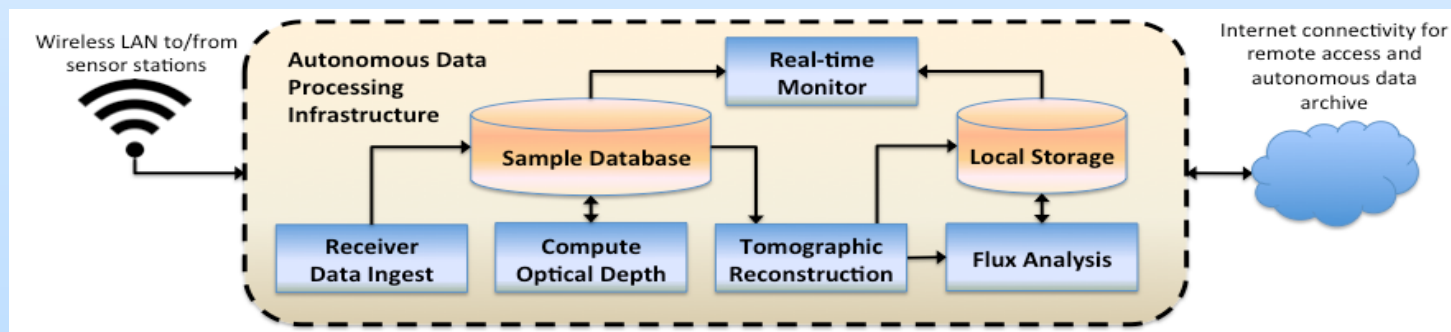
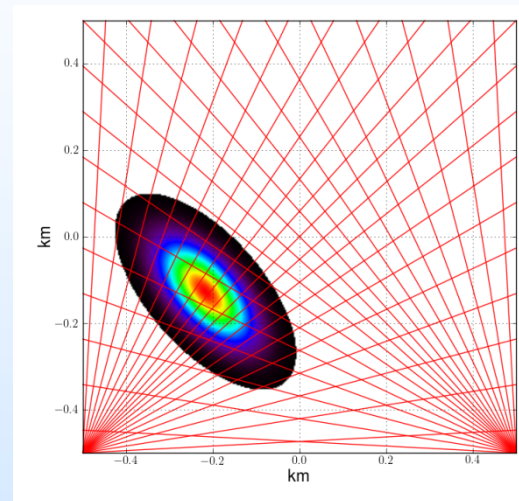
Project Overview: Goals and Objectives

- The overall program objective is to provide a laser based measurement of carbon concentrations across a plane over ~1.6 km² using 2 sensors and a series of retro reflectors along with tomographic like methods to generate 2D concentration maps across the area.

BP & Phase	Task	M1 Name	Description	Planned Completion (Baseline)	Planned Completion (Revised)	Actual Completion	Status/Comments
1	4	Complete performance testing at sensor level	Complete performance testing at sensor level	3/21/2014	4/22/2014	4/22/2014	Will be met when quantified data shows the sensor meets design specifications. Proceed with system development
1	6	Complete performance assessment at system level	Complete Phase I data analysis and system level performance assessment	6/20/2014	7/31/2014		Will be met upon completion of Phase I report and updated version of algorithm description document provided to DOE including 2D concentration maps from post processing.
1	12	Complete ZERT testing	Complete testing at ZERT site and assessment of system level performance	10/31/2014	10/31/2014		Will be met when quantified assessment of 2D concentration estimates from ZERT controlled release experiments are delivered to DOE
2	16	Complete local testing of extended deployment system	Complete final retrieval software integration and test via local testing of extended deployment system	1/26/2015	1/26/2015		Will be met when autonomous operation over a full week is achieved with only remote interaction, while real time 2D CO ₂ concentration maps are publicly available via a web interface
2	17	Initiate testing at Decatur site	Initiate autonomous remote field testing at Decatur site	3/16/2015	3/16/2015		Will be met when remote system is collecting data autonomously at Decatur site
2	17	Complete testing at Decatur site	Complete autonomous remote field testing at Decatur site	9/30/2015	9/30/2015		Will be met when remote system has completed autonomous data collection at Decatur site

General Overview

This project serves to demonstrate a system utilizing 2 scanning laser-based differential absorption sensors, combined with a series of retro-reflectors and intelligent algorithms to generate real time 2D concentration and flux maps over a carbon sequestration storage facility. The final phase will demonstrate an autonomous, remote measurement of the entire storage field with high precision and accuracy, while making the data available in near real time via a web-based interface.

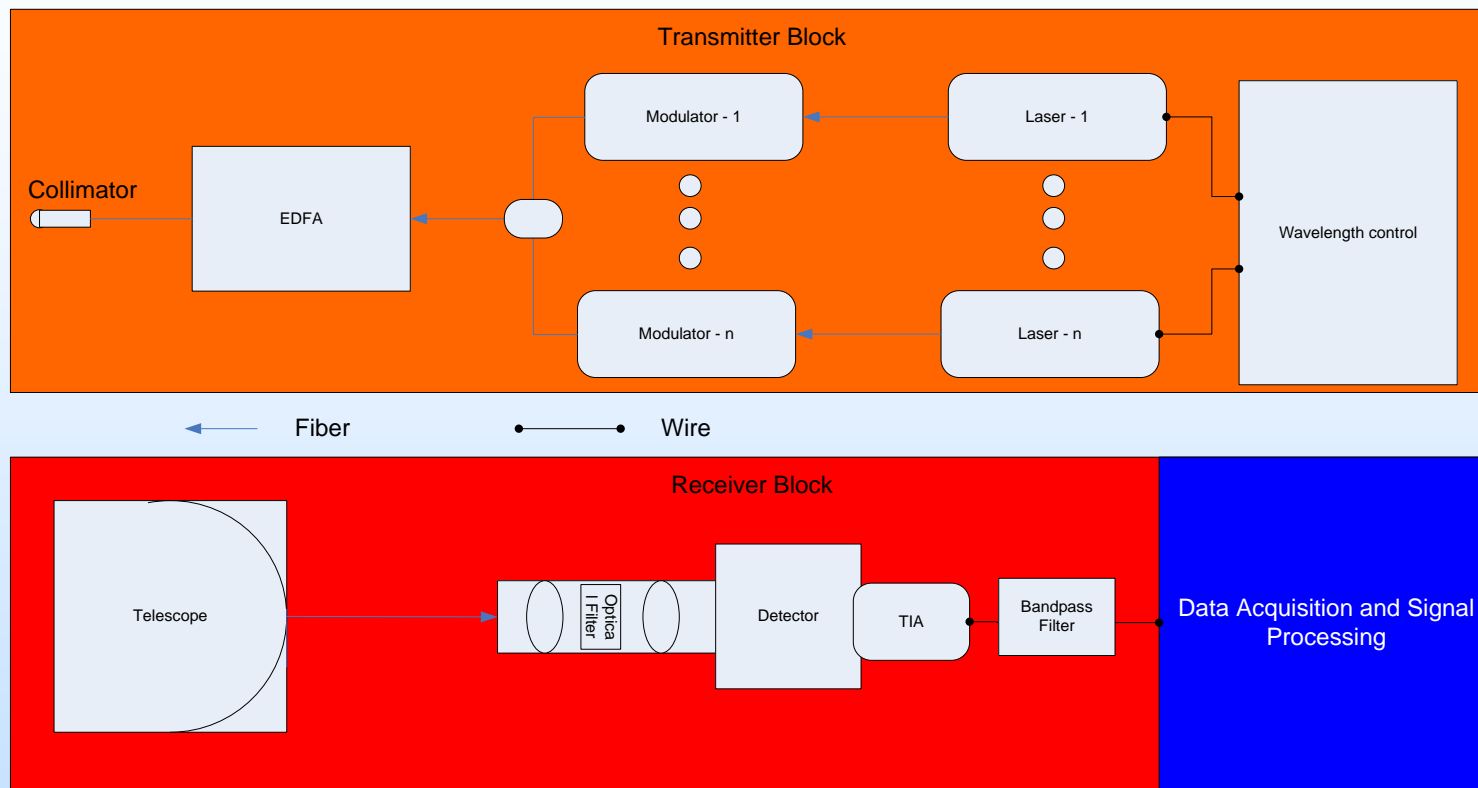


TECHNICAL STATUS

Sensor Design

- The Green LITE sensor design was based on prior work with Exelis' airborne Multifunctional Fiber Laser Lidar (MFLL) and, more specifically, the ground-based prototype of the Laser Atmospheric Transmitter and Receiver-Network (LAnTeRN).
- The first task was to review and modify the LAnTeRN prototype design for the Green LITE specific application of Ground Carbon Sequestration monitoring.
- The design was reviewed and refined given the objectives of the Green LITE program for remote operation, and the required components were identified.

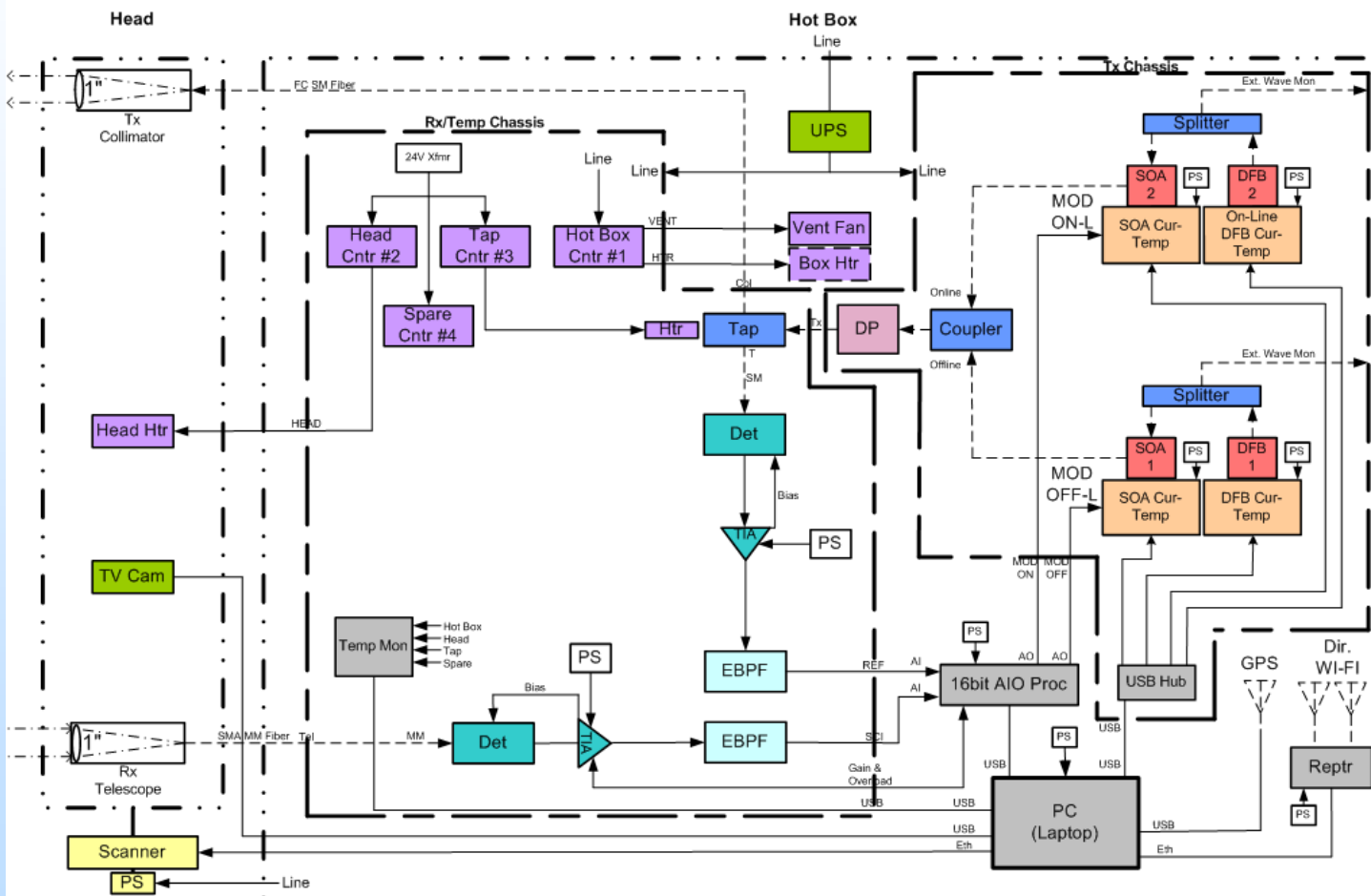
General Instrument Architecture



High reliability telecom components, CW operation requires low peak power and allows for more robust, less expensive laser components and higher system efficiency.

Sensor Detailed Block Diagram

GreenLITE Tx/Rx Block Diagram

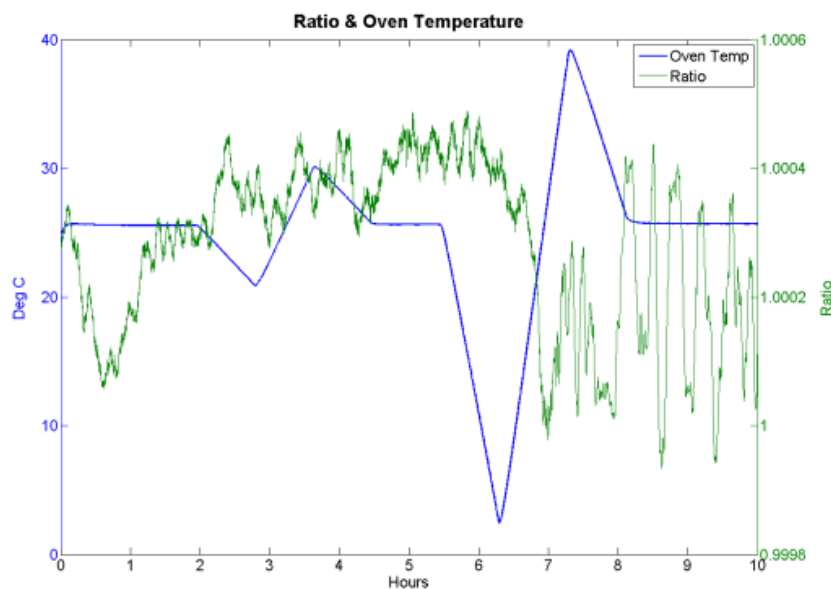
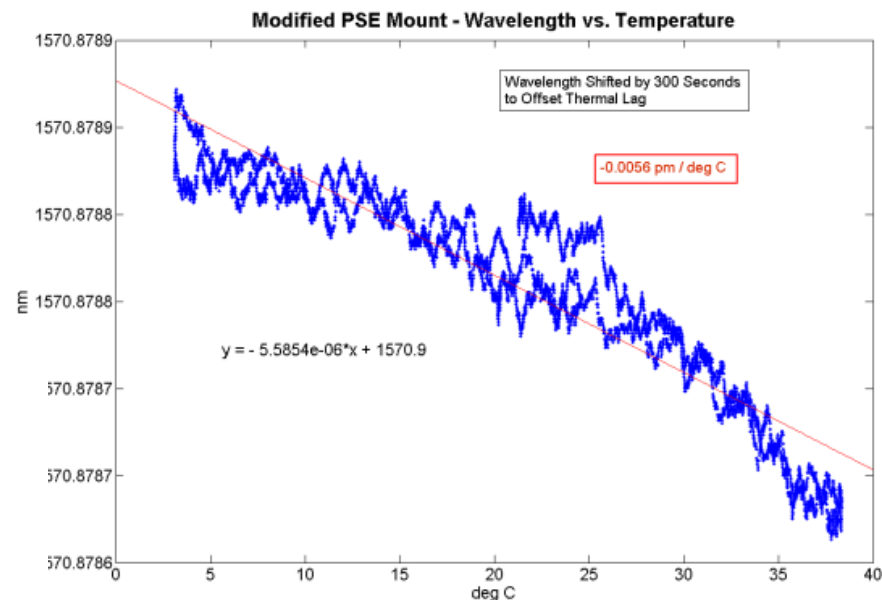


Component Selection

- As the design was refined and component specifications were developed, suitable commercial components were identified which met the design criteria and were then procured if not already on hand from prior development.
- Components were custom built if not commercially available.
- Components were characterized to verify specifications and tested for sensitivity to environmental conditions.
- Examples of characterization results are shown on next slide.

Component Characterization

Wavelength stability
requirement was +/-
0.02 pm/degC

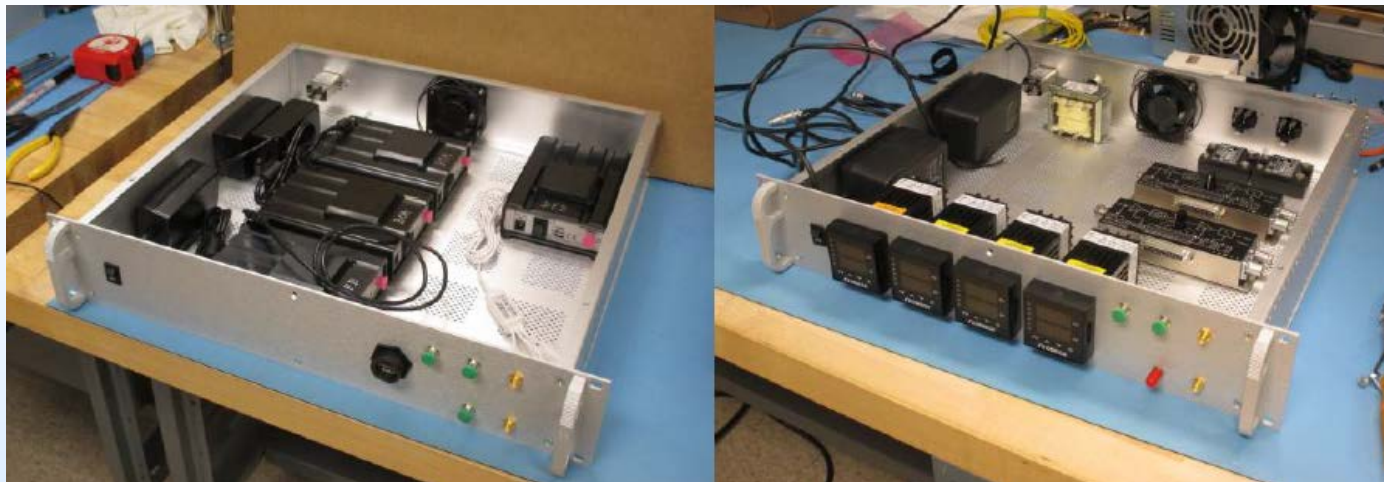


Ratio Impact
Requirement for Fiber
Tap Over 0-40C was
0.001

Component Integration

- Components were integrated and installed in 2 modular chassis inside a thermally controlled “hot box.”
- The hot box maintains a constant $38\text{ }^{\circ}\text{C} \pm 0.2\text{ }^{\circ}\text{C}$, which is above any ambient temperatures expected during remote deployment. This provides a constant thermal environment for the hardware components and prevents condensation from humid air.
- Temperatures of critical components also have closed loop control in addition to the controlled ambient temperature (Optics Head, Fiber taps, Lasers)

Component Integration



Hotbox
maintains
temperatures
and prevents
condensation



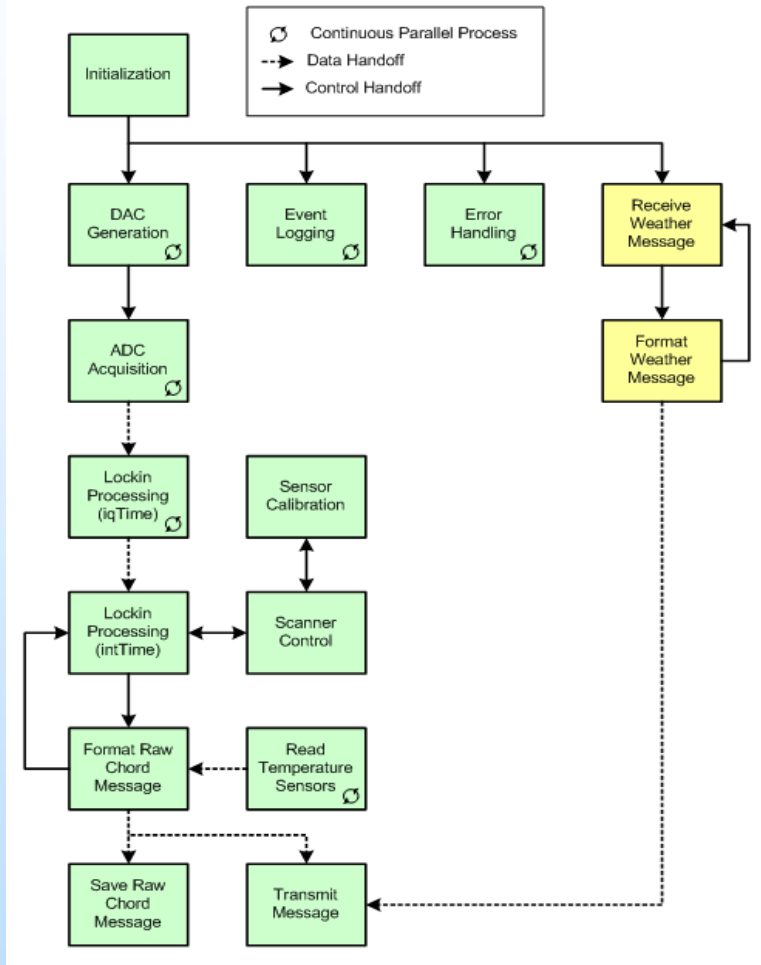
Optical Design

- The original optical design for the transmitter and receiver used refractive optics.
- Component testing revealed that refractive optics caused a variation of the wavefront significant enough to bias the measured transmission ratio.
- Further testing and several iterations of the design resulted in a reflective transmitter/receiver design that works very well.
- This design change also impacted mechanical and thermal design, and ultimately led to about a 1 month delay to the first and second milestones for the project.

Software Development

- Similarly to the hardware development, the Green LITE software development leveraged as much of the existing software from MFLL and LAnTeRN as possible.
- The software is written in LabVIEW and uses an event-based architecture.
- The software allows for 2 modes of operation:
 - Manual: no automated movement of the scanner
 - Automatic: the scanner automatically scans through a list of pre-determined pointing locations at a user-specified time interval
- Manual mode is useful for testing and debugging while automatic mode is used for normal operation.

Software Block Diagram



- Software functional block diagram shows different operations performed and how execution control and data are passed between operations.
- Yellow blocks are for receiving weather data from weather station and pushing to database. Another method of accessing weather data is currently being used, but this will be implemented prior to remote deployment at IBDP site.

Software Screenshots

The screenshot displays the Green LITE software interface with the following components:

- Menu Bar:** File, Edit, View, Project, Operate, Tools, Window, Help.
- Buttons:** SCANNER, EVENT LOG, WEATHER.
- Scanner Mode:** Autoconnect To Scanner, MANUAL.
- Status Panel:**
 - Modulation DAC: OFF
 - Sampling ADC: OFF
 - Lasers: DFBoff OFF, DFBon OFF, SOAoff OFF, SOAon OFF
 - Temperatures: Cabinet 0, Head 0, Tap 0, Other 0
 - Scanner: NOT CONNECTED
 - Weather Station: NOT CONNECTED
 - Database Connection: NOT CONNECTED
 - Program stopped.
- DAQ Control:** Modulation DAC START, Sampling ADC START.
- Settings:**
 - Lockin Period: 1 sec
 - Dwell Time: 10 sec
 - Ratio Offset Cal Coeff: 1.000000
 - TIA Gain: 10⁶ OL
 - Buttons: REF - No Clipping, SCI - No Clipping
- Graph:** Ratio vs Lockin Period #. Y-axis ranges from -1 to 1. X-axis shows Lockin Period # 1.
- Last Calibration Time:** 12:00:00.000 AM 1/1/2014. Includes a STOP PROGRAM button.
- File Saving:**
 - Raw Data Filename: Not Saving Raw Data
 - Desired File Size (MB): 500
 - Current File Size (MB): 0
 - Save JSON Data File?
 - Push Data To Database
 - Processed Data Filename: Not Saving Processed Data
- Current A/D Block:**
 - Samples/Int. Period: 1M
 - Samples Acquired: 60k
 - RefOn: 0.0000 Vrms
 - RefOff: 0.0000 Vrms
 - SciOn: 0.0000 Vrms
 - SciOff: 0.0000 Vrms
 - Ratio: 0.000000
 - Rx Power: 0.00E+0 W
 - Range: 0.00 m
- Current Lockin Period:**
 - Timestamp: 12:00:00.000 AM 1/1/2014
 - RefOn: 0.0000 Vrms
 - RefOff: 0.0000 Vrms
 - SciOn: 0.0000 Vrms
 - SciOff: 0.0000 Vrms
 - Ratio: 0.000000
 - Rx Power: 0.00E+0 W
 - Range: 0.00 m
- Ratio Statistics & Calibration:**
 - Ratio Mean: 0.0000000
 - Ratio Std. Dev.: 0.0000000
 - SNR: 0
 - Buttons: RESET STATISTICS, APPLY CAL COEFF
 - Calibration Coeff: 0
 - Current Dwell Time: 0 sec

Software Screenshots

Scanner

Status: **CONNECTED**

Azimuth: 0.00 deg | Elevation: 0.00 deg

Moving: | STOP | HOME

Heading: 3.53 | Offset Angle: 363.53 deg

Manual Scan | Scanner Setup | Landmarks | Landmark Setup

Manual Scan

STOP

10x 1x 1x 10x

1x Step: 1.00 deg

Calibration

Perform Calibration

Scan Rate: 1.00 deg/sec

Scan Range: 3.00 deg +/-

Scan Duration: 10 sec

Scan to AZ-EL

AZ: 0.00 | EL: 0.00 | GO | STOP

Scan to Landmark

R1 | GO | STOP

Scanner

Status: **CONNECTED**

Azimuth: 0.00 deg | Elevation: 0.00 deg

Moving: | STOP | HOME

Heading: 3.53 | Offset Angle: 363.53 deg

Manual Scan | Scanner Setup | Landmarks | Landmark Setup

Landmarks

Name	AZ	EL
R1	-8.70	1.80
R2	-7.20	1.80
CAL	79.80	1.80

Add | Remove | Scan To | STOP

New/Edit Landmarks

Name	Azimuth	Elevation
R2	-7.20	1.80

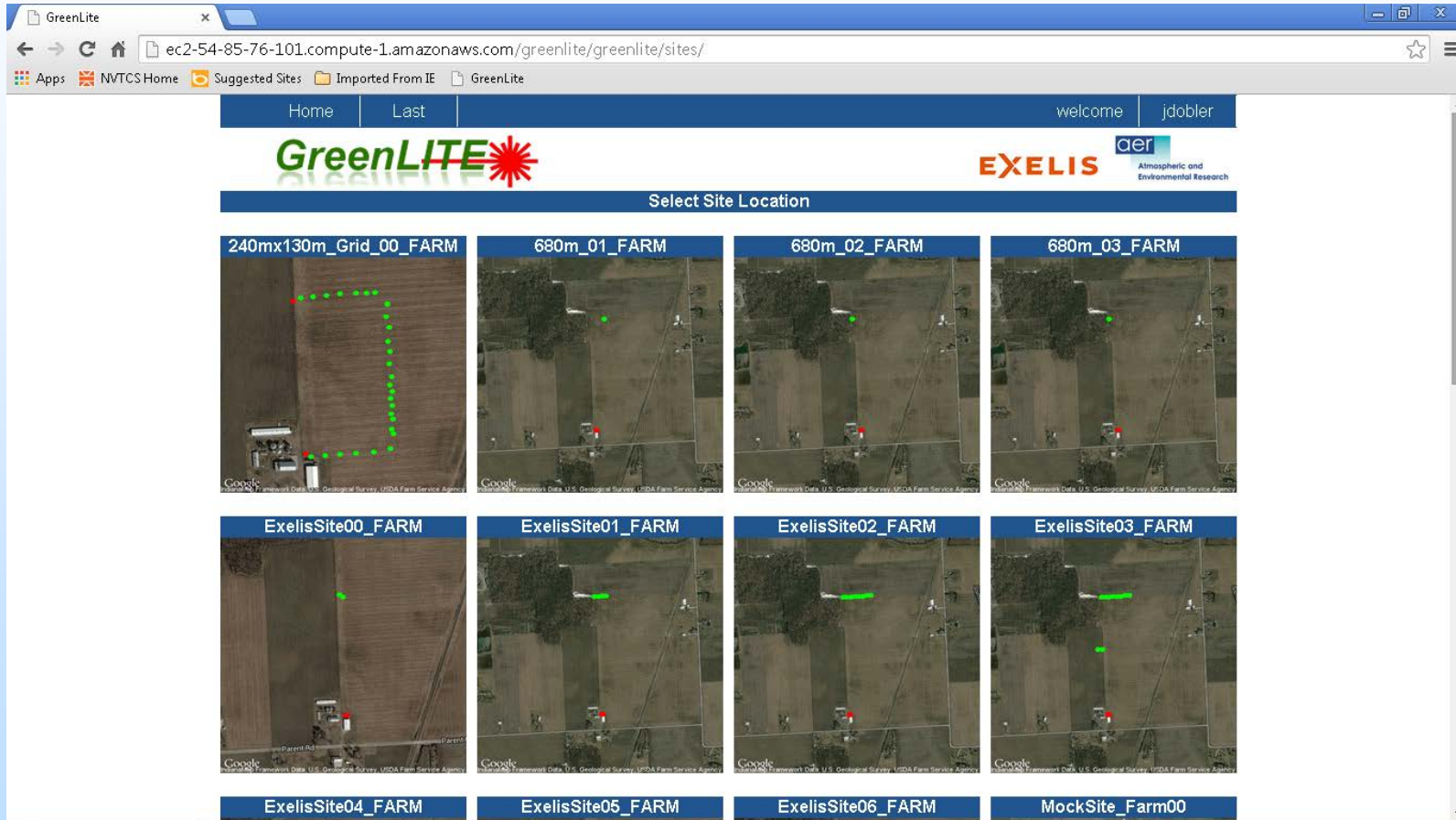
Set From Scanner | Apply Changes

Load Site Config | Load Landmarks | Save Landmarks

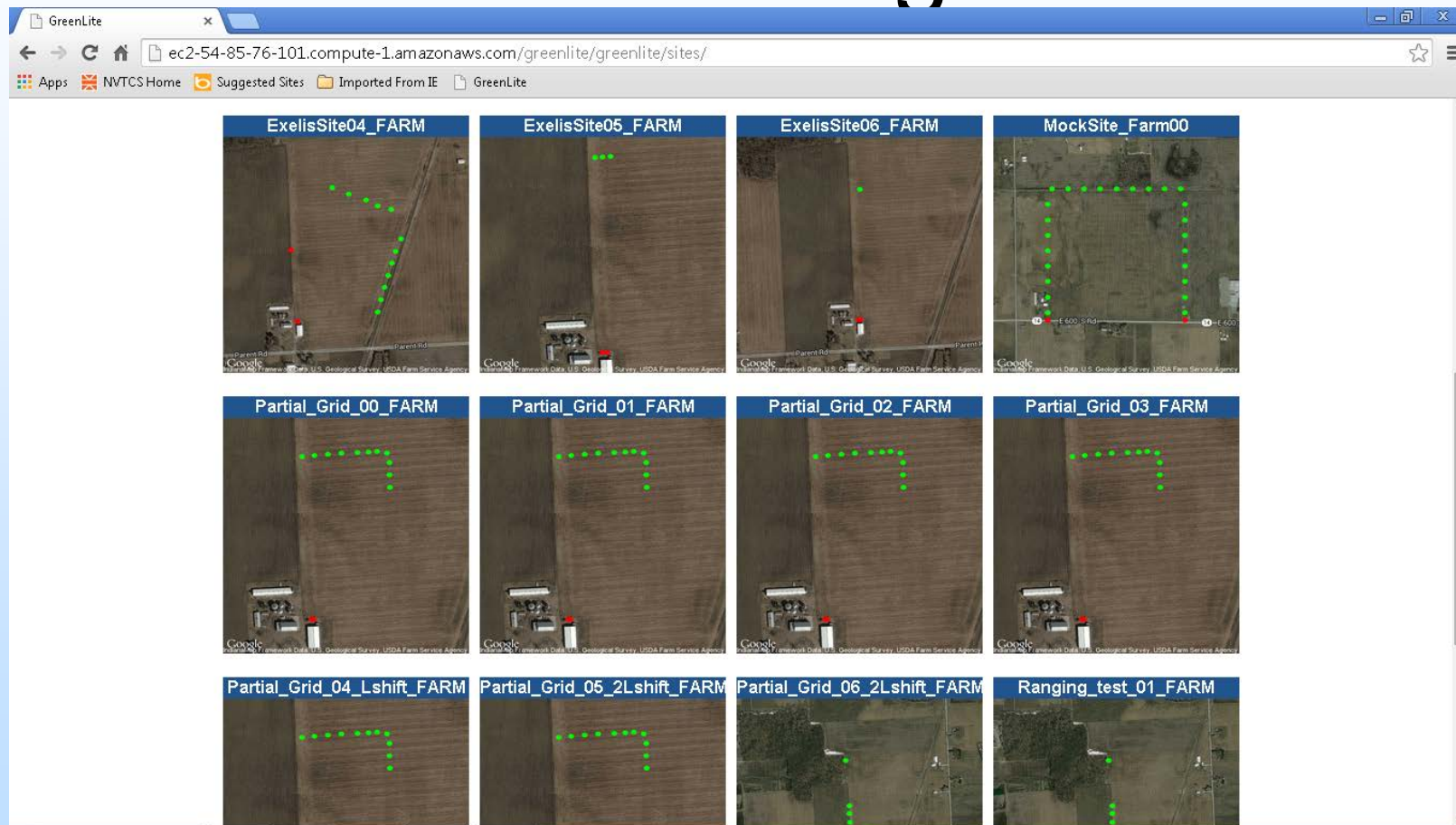
Sensor Unit Testing

- When the first sensor build was complete and the software was fully functional, the sensor was tested at the Exelis Farm test facility.
- The sensor was scanned back and forth between 2 retro-reflectors and consistently demonstrated an SNR for the differential transmission measurement of > 3000 with 10-second averages, exceeding the design specification by a factor of 3.
- All data was loaded directly to the web-based database and retrieval site via a 3G/4G wireless connection.
- Testing then progressed to system level testing consisting of both transceivers and multiple retro reflectors.

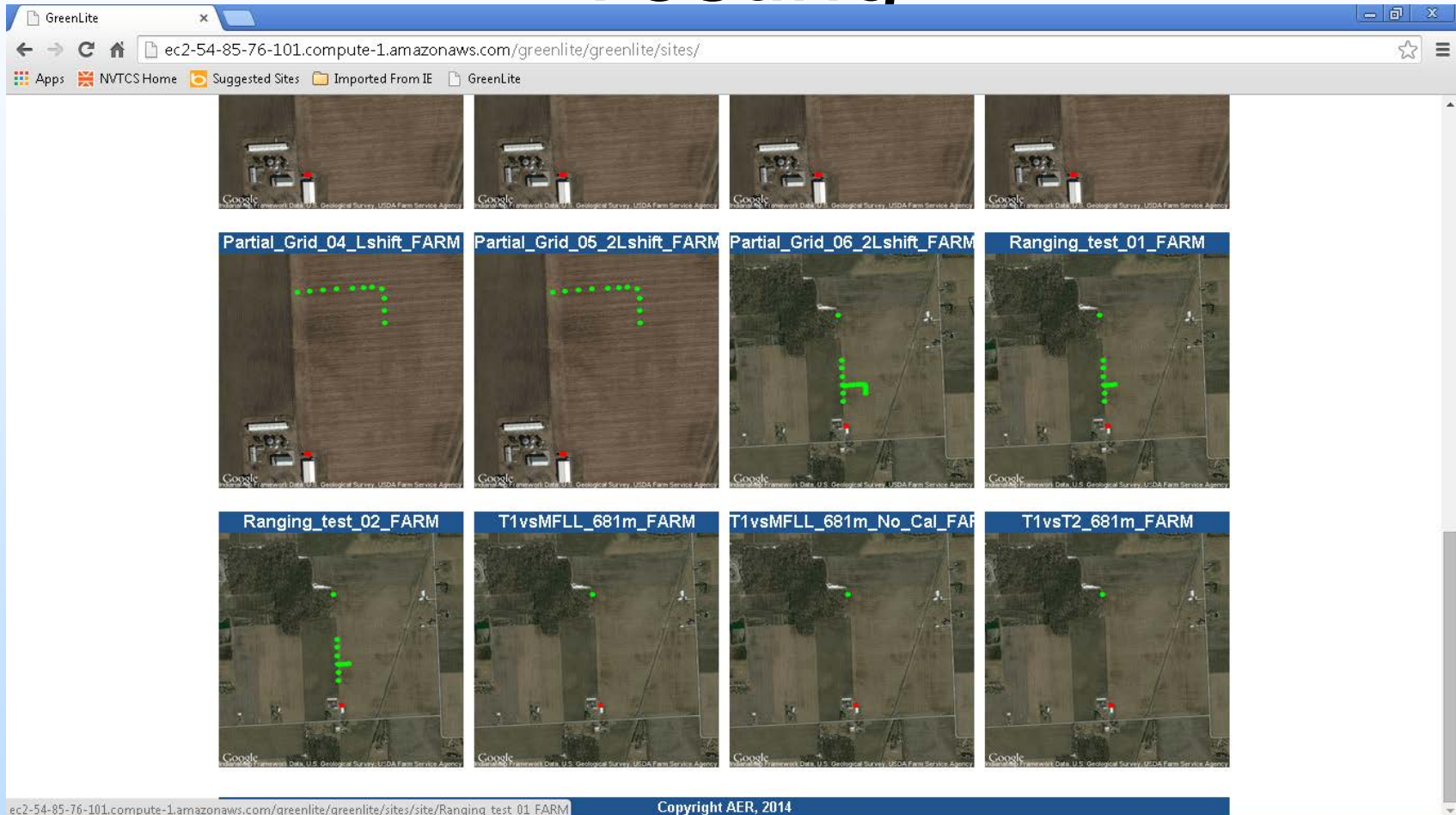
Local Sensor and System Level Testing



Local Sensor and System Level Testing



Local Sensor and System Level Testing

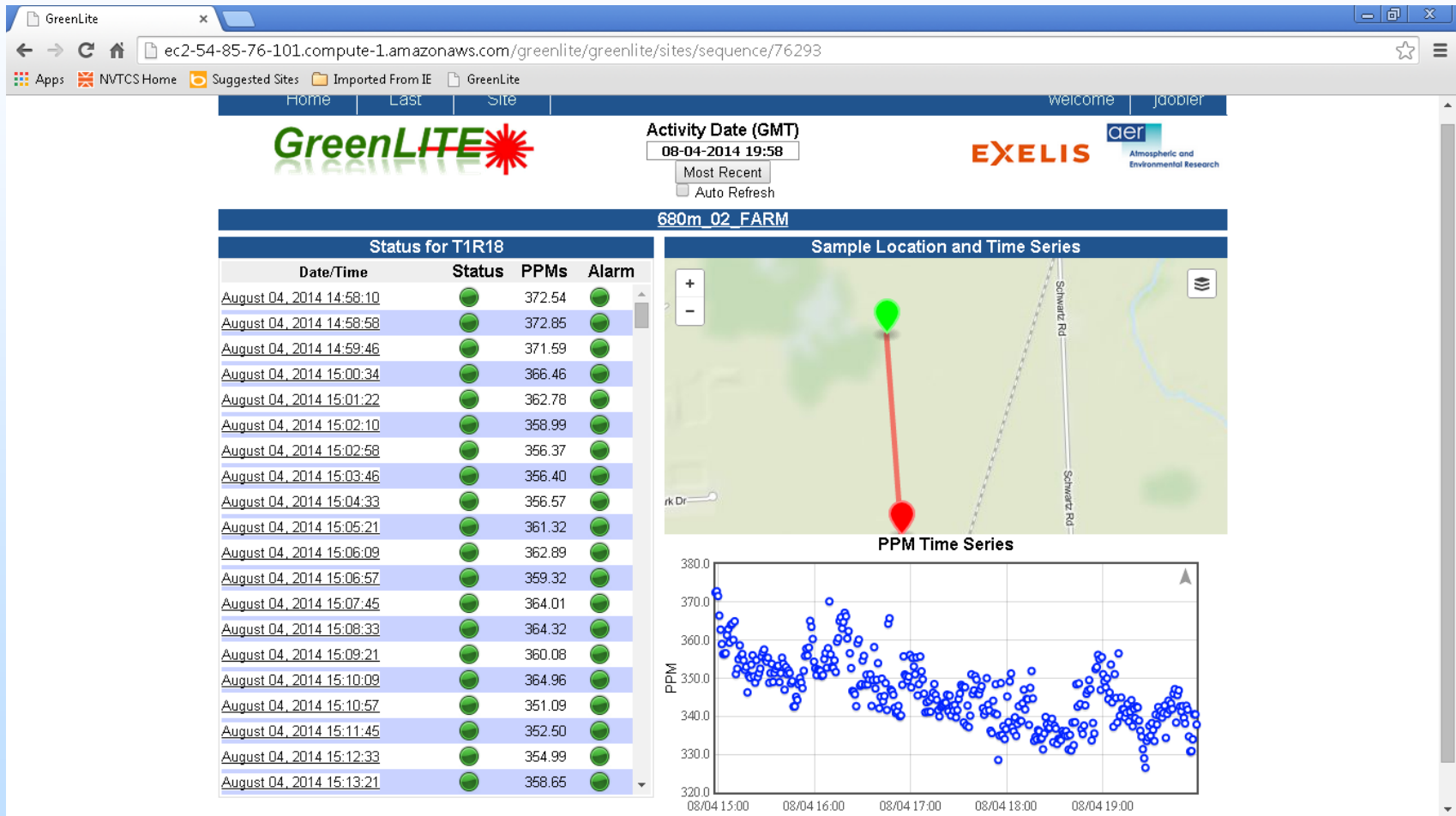


Local System Testing Setup



Exelis Farm
Test Site Used
for Preliminary
Sensor and
System Level
Testing

Looking at Individual Chord Data on Web-based Tool



Looking at Individual Measurement Data

GreenLITE Activity Date (GMT) 08-04-2014 15:08

680m_02_FARM

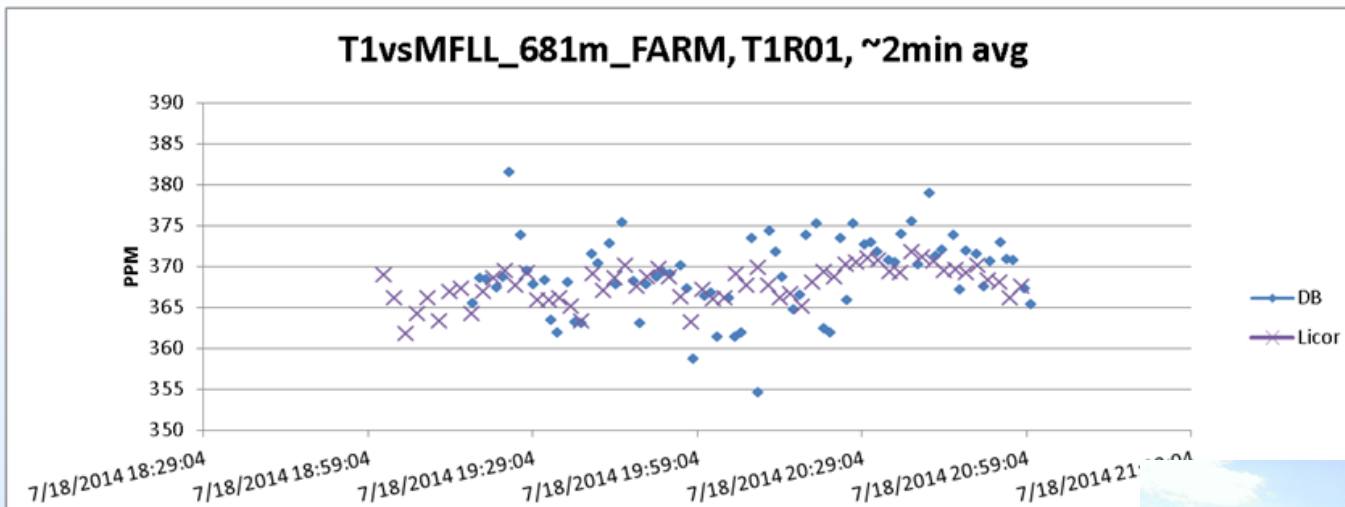
T1R18 Status	
Parameter	Value
site name	680m_02_FARM
date	August 04, 2014 15:08:33
transceiver	T1
transceiver lat	41.108394
transceiver lon	-85.010155
reflector	R18
reflector lat	41.114524
reflector lon	-85.010761
concentration ppm	384.32
delta OD	0.0674
warning status	False
error status	False
medium level flag	False
high level flag	False
metadata: temperature	25.8
metadata: pressure	991.301994083
metadata: windSpeed	0.0
metadata: relHumidity	72.0
metadata: wxDate	August 04, 2014 15:08:37
metadata: message	
metadata: windDirection	287.0

Sample Location

Disable

Copyright AER, 2014

Comparison With In Situ



GreenLITE

Activity Date (GMT): 07-18-2014 21:00

EXELIS

T1vsMFL_681m_FARM

Date/Time	Status	PPMs	Alarm
July 18, 2014 19:16:22	●	364.50	
July 18, 2014 19:16:32	●	362.17	
July 18, 2014 19:16:42	●	362.06	
July 18, 2014 19:16:52	●	363.08	
July 18, 2014 19:17:02	●	363.62	
July 18, 2014 19:18:02	●	369.97	
July 18, 2014 19:18:12	●	374.07	
July 18, 2014 19:18:22	●	368.87	
July 18, 2014 19:18:32	●	365.03	
July 18, 2014 19:18:42	●	364.16	
July 18, 2014 19:18:52	●	363.88	
July 18, 2014 19:19:02	●	367.30	
July 18, 2014 19:19:12	●	375.96	
July 18, 2014 19:19:22	●	376.14	
July 18, 2014 19:19:32	●	375.46	
July 18, 2014 19:19:42	●	370.64	
July 18, 2014 19:19:52	●	365.82	
July 18, 2014 19:20:02	●	365.64	
July 18, 2014 19:20:12	●	365.16	
July 18, 2014 19:20:22	●	369.19	

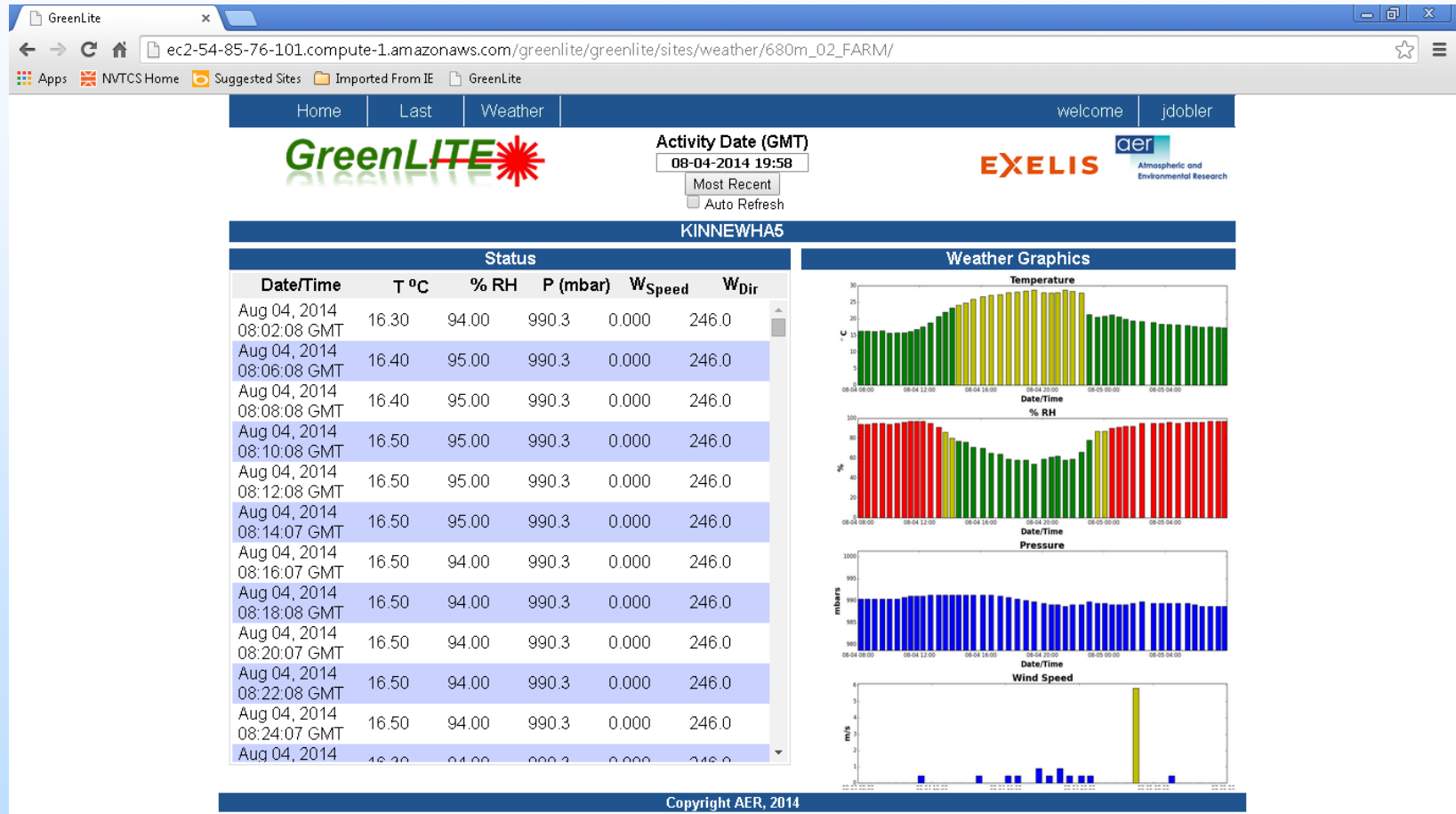
Sample Location and Time Series

PPM Time Series

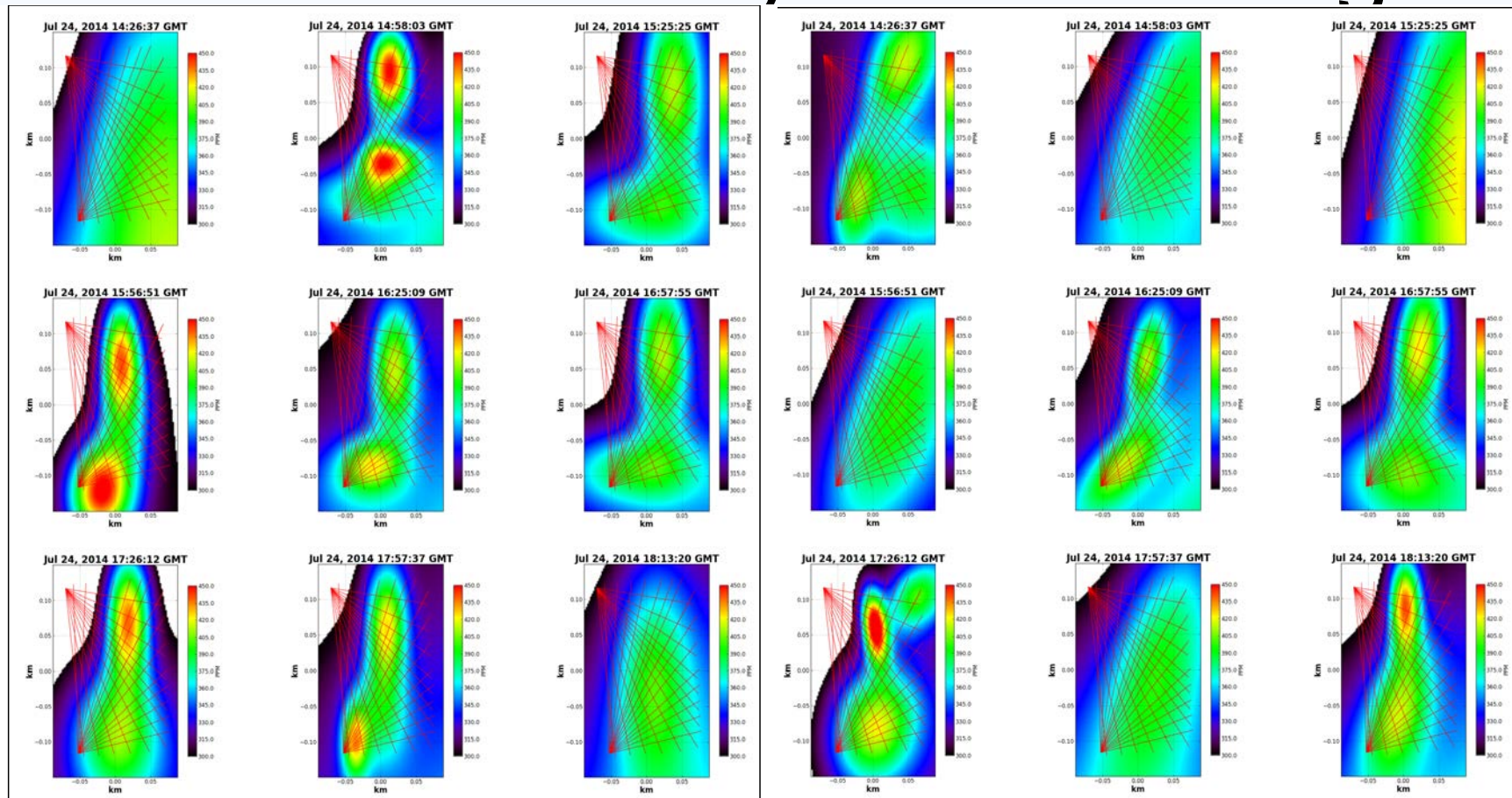
UTC



Weather Data Collected for Retrievals



Preliminary 2D Reconstructions from Local System Testing



Accomplishments to Date

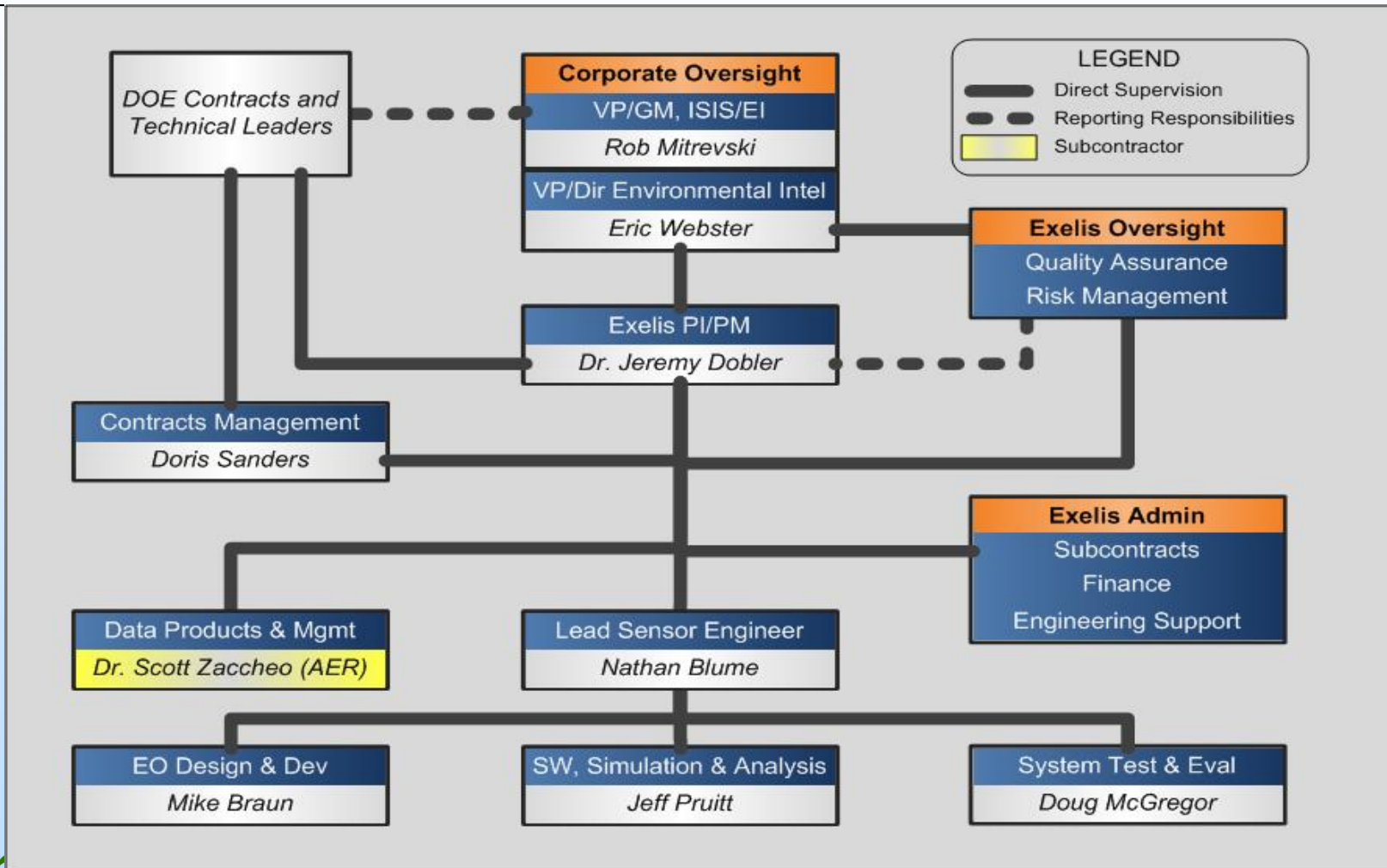
- Sensors designed and requirements specified at component level
- Component performance validated in laboratory
- System design and trade studies completed
- Sensors assembled and integrated with software
- Sensor level testing exceeded design specification by 3X
- Retrieval algorithms developed and tested
- Database and Web tools developed with user interface
- System level testing nearing completion
- Preliminary 2D mapping algorithms developed and tested with simulated and measured data

Summary

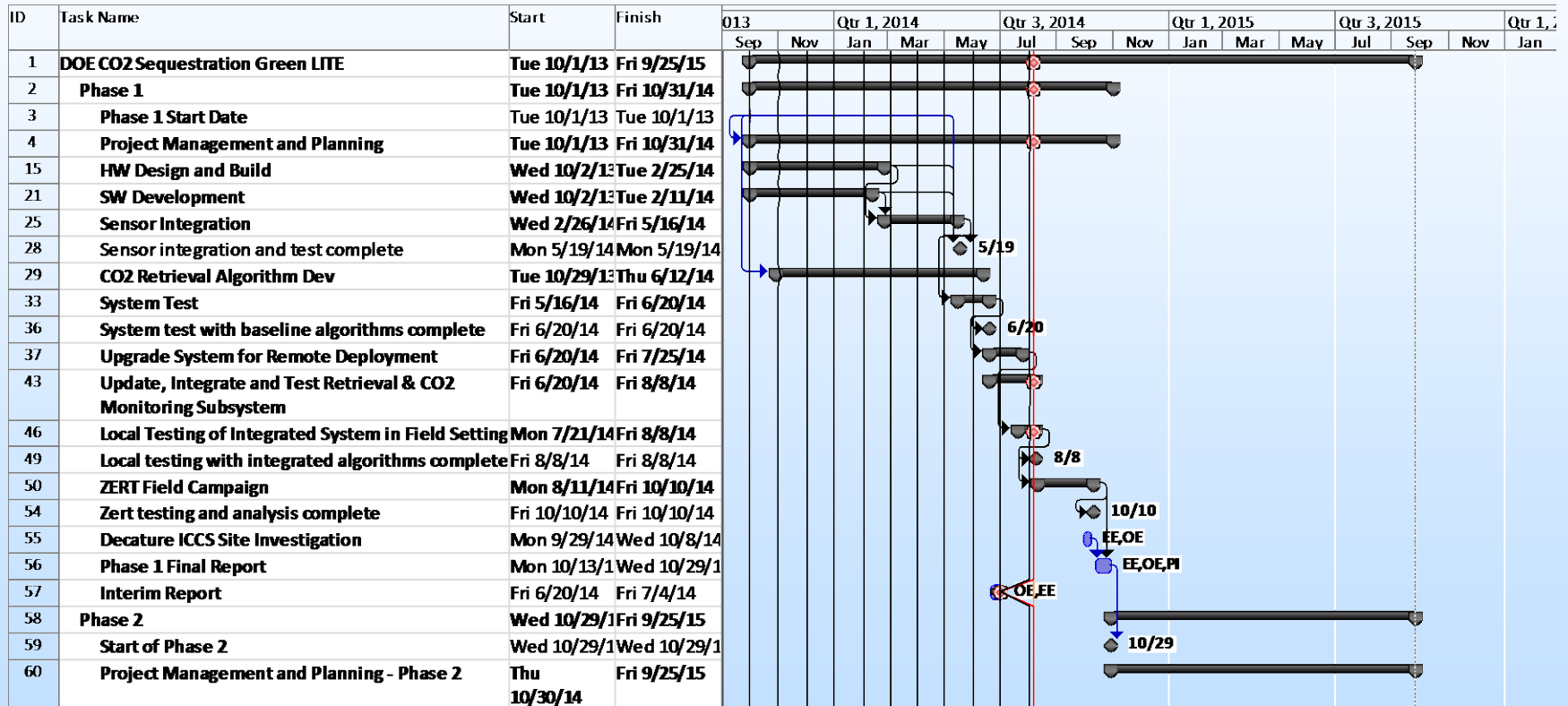
- System is capable of providing concentration and 2D maps of CO₂ concentration over hundreds of square meter area.
- Truth data is difficult to obtain using currently available hardware.
- Source determination highly dependent on wind speed and height above ground level.
- All web-based real-time processing, storage and dissemination of data is convenient and viable.

APPENDIX

Organization Chart



Gantt Chart



Bibliography

No peer reviewed publications have been generated from the project yet. Several presentations are planned and peer reviewed publications will follow testing at the ZERT site and analysis of the results.

- We are submitting two abstracts for the American Geophysical Union Annual Meeting to be held in San Francisco, CA Dec. 15-19.
- “A Laser Absorption Spectroscopy System for 2D Mapping of CO₂ Over Large Spatial Areas for Monitoring, Reporting and Verification of Ground Carbon Storage Sites”
- “Assessing Methods for Mapping 2D Field Concentrations of CO₂ Over Large Spatial Areas for Monitoring Time Varying Fluctuations”
- Another abstract is being submitted to the American Meteorological Society Meeting to be held in Phoenix, Arizona January 4 – 8th. We will also look for an opportunity to publish the results of the Zero Emissions Research and Technology site testing and results.
- “Intensity Modulated Continuous Wave Laser Absorption Spectroscopy for Addressing Currently Unmet Carbon Monitoring Needs”

Integrated Path Differential Absorption

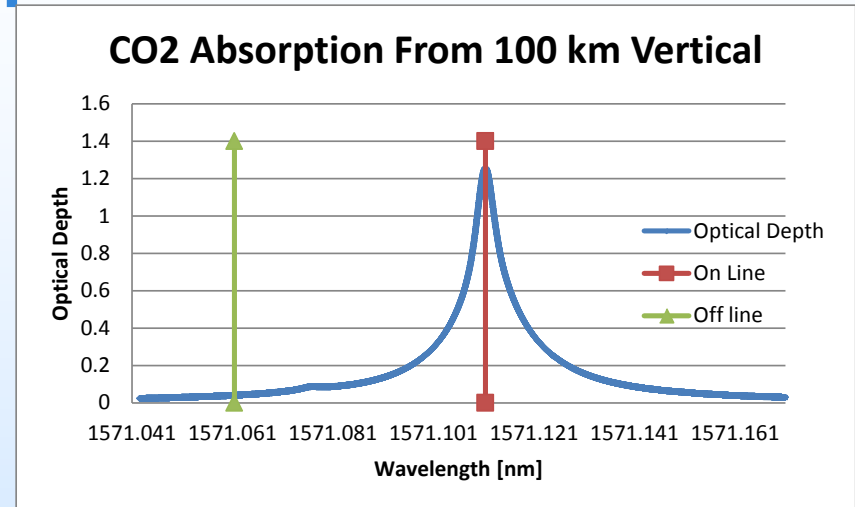
Starting with the basic lidar equation

$$P_{rec\lambda}(Z) = P_{o\lambda} \cdot C \frac{A}{z^2} \cdot \rho_{\lambda} \cdot \tau_{\lambda}^C(z) \cdot \tau_{\lambda}(z)$$

We are interested in the last term which is the transmission from range 0 to the target Z and back due to absorption.

When a simultaneous measurement is made at two closely spaced wavelengths, all other terms are common to both channels, and thus taking the ratio yields the differential transmission.

$$\Delta \tau_{\lambda_{on}-\lambda_{off}}(z) = \frac{\tau_{\lambda_{on}}}{\tau_{\lambda_{off}}} = \frac{P_{rec\lambda_{off}}}{P_{rec\lambda_{on}}} \cdot \frac{P_{o\lambda_{on}}}{P_{o\lambda_{off}}}$$



The total integrated column number density of the absorbing molecule can then be determined if the absorption cross section is known.