

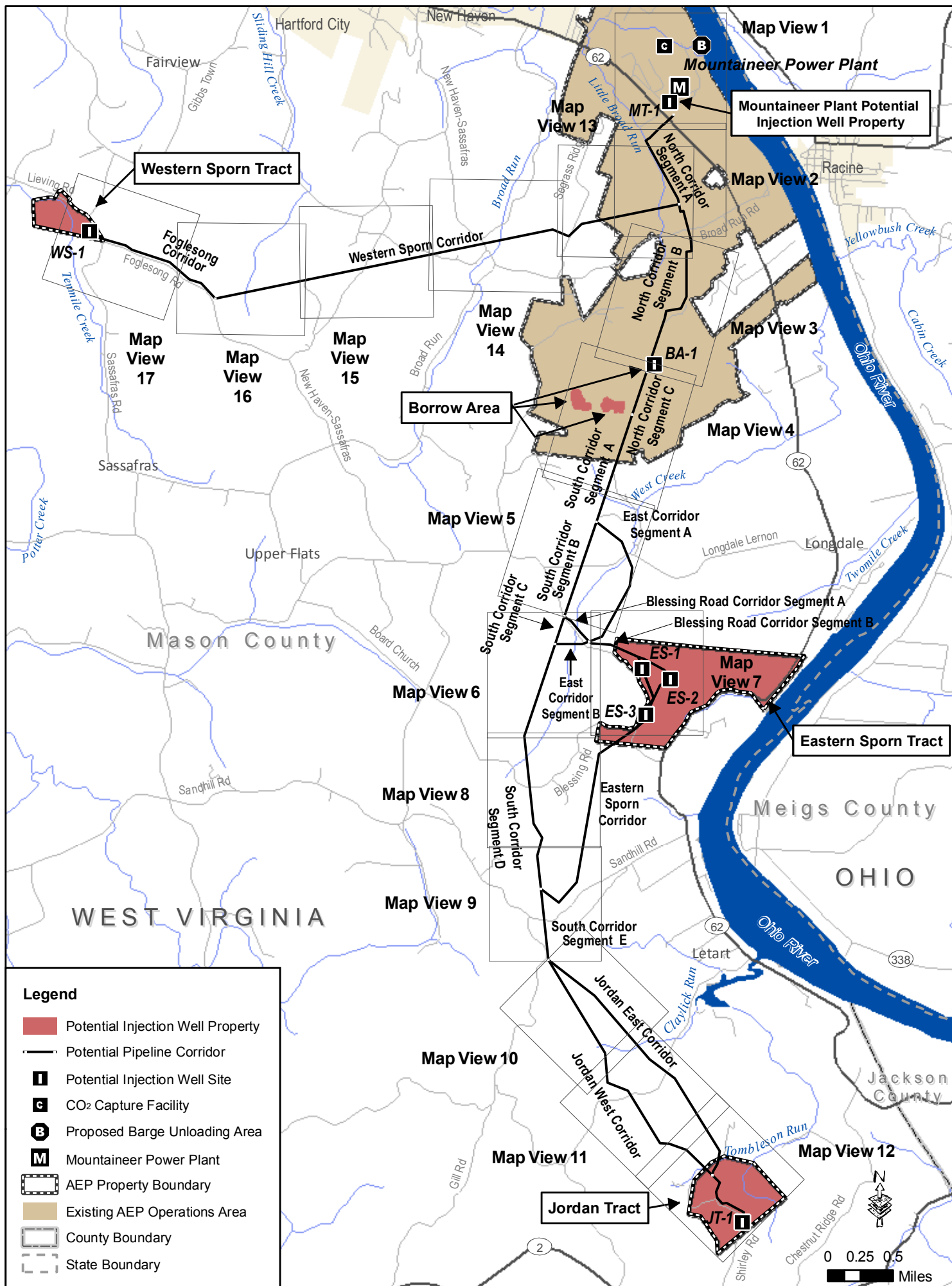
APPENDIX D
PIPELINE CORRIDOR MAP VIEWS

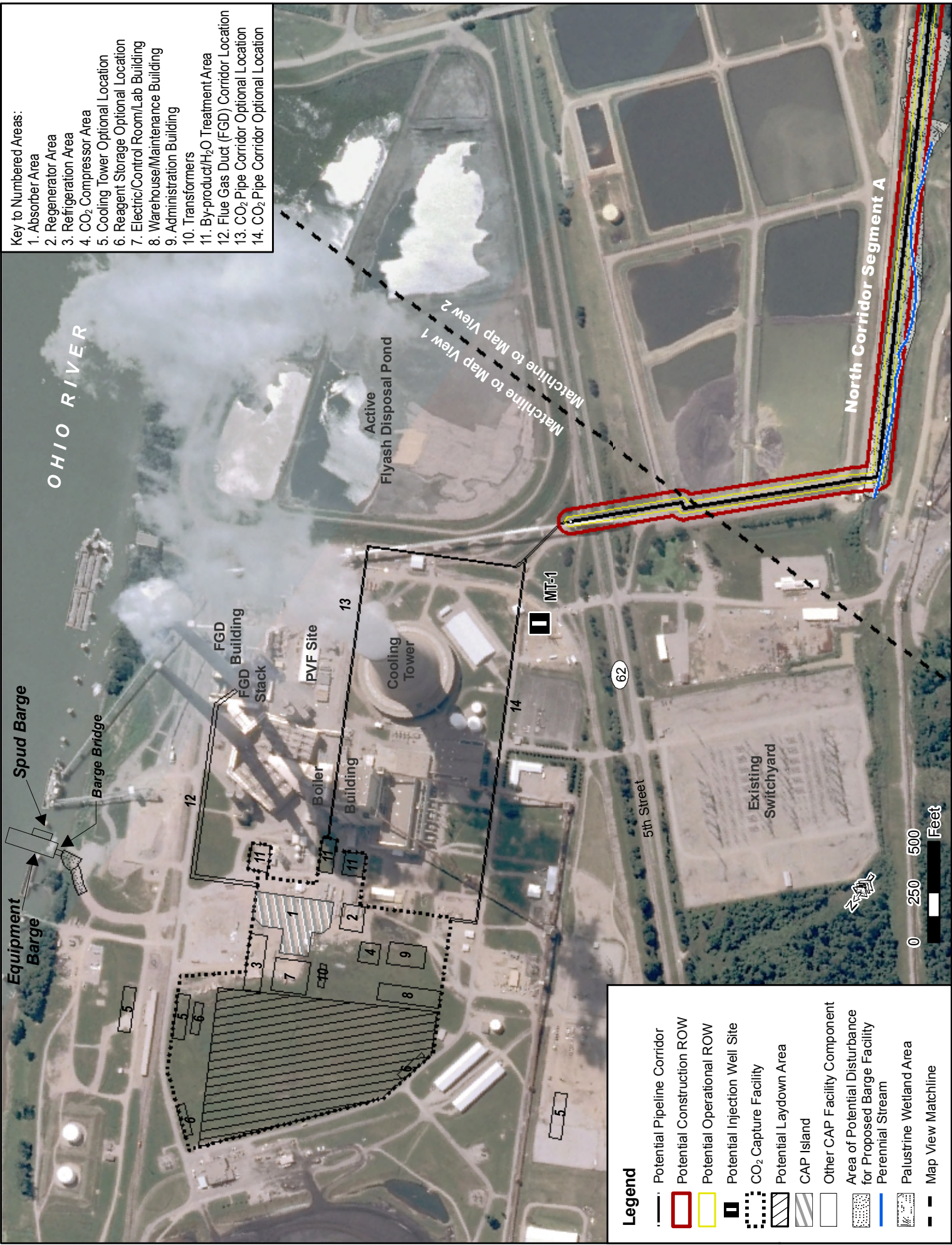
for the

American Electric Power
Mountaineer Commercial Scale
Carbon Capture and Storage Project
Mason County, West Virginia

Contract No. 326849x215
February 2011

INTENTIONALLY LEFT BLANK





- Key to Numbered Areas:**
1. Absorber Area
 2. Regenerator Area
 3. Refrigeration Area
 4. CO₂ Compressor Area
 5. Cooling Tower Optional Location
 6. Reagent Storage Optional Location
 7. Electric/Control Room/Lab Building
 8. Warehouse/Maintenance Building
 9. Administration Building
 10. Transformers
 11. By-product/H₂O Treatment Area
 12. Flue Gas Duct (FGD) Corridor Location
 13. CO₂ Pipe Corridor Optional Location
 14. CO₂ Pipe Corridor Optional Location

- Legend**
- - - Potential Pipeline Corridor
 - Red Box Potential Construction ROW
 - Yellow Box Potential Operational ROW
 - Black Square Potential Injection Well Site
 - Dotted Box CO₂ Capture Facility
 - Diagonal Lines Box Potential Laydown Area
 - Horizontal Lines Box CAP Island
 - White Box Other CAP Facility Component
 - Stippled Box Area of Potential Disturbance for Proposed Barge Facility
 - Blue Line Perennial Stream
 - Green Box Palustrine Wetland Area
 - Map View Matchline

Map View 1 of 17



Matchline to Map View 2

Matchline to Map View 3

County Road 9 / Broad Run

North Corridor Segment B

Legend

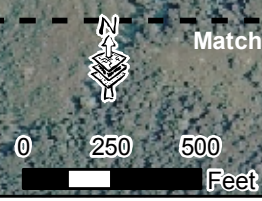
-  Potential Injection Well Property
-  Potential Pipeline Corridor
-  Potential Construction ROW
-  Potential Operational ROW
-  Potential Injection Well Site
-  Potential Injection Well Site Construction Area
-  Potential Injection Well Site Operational Area
-  Potential Access Road
-  Ephemeral Stream
-  Intermittent Stream
-  Map View Matchline

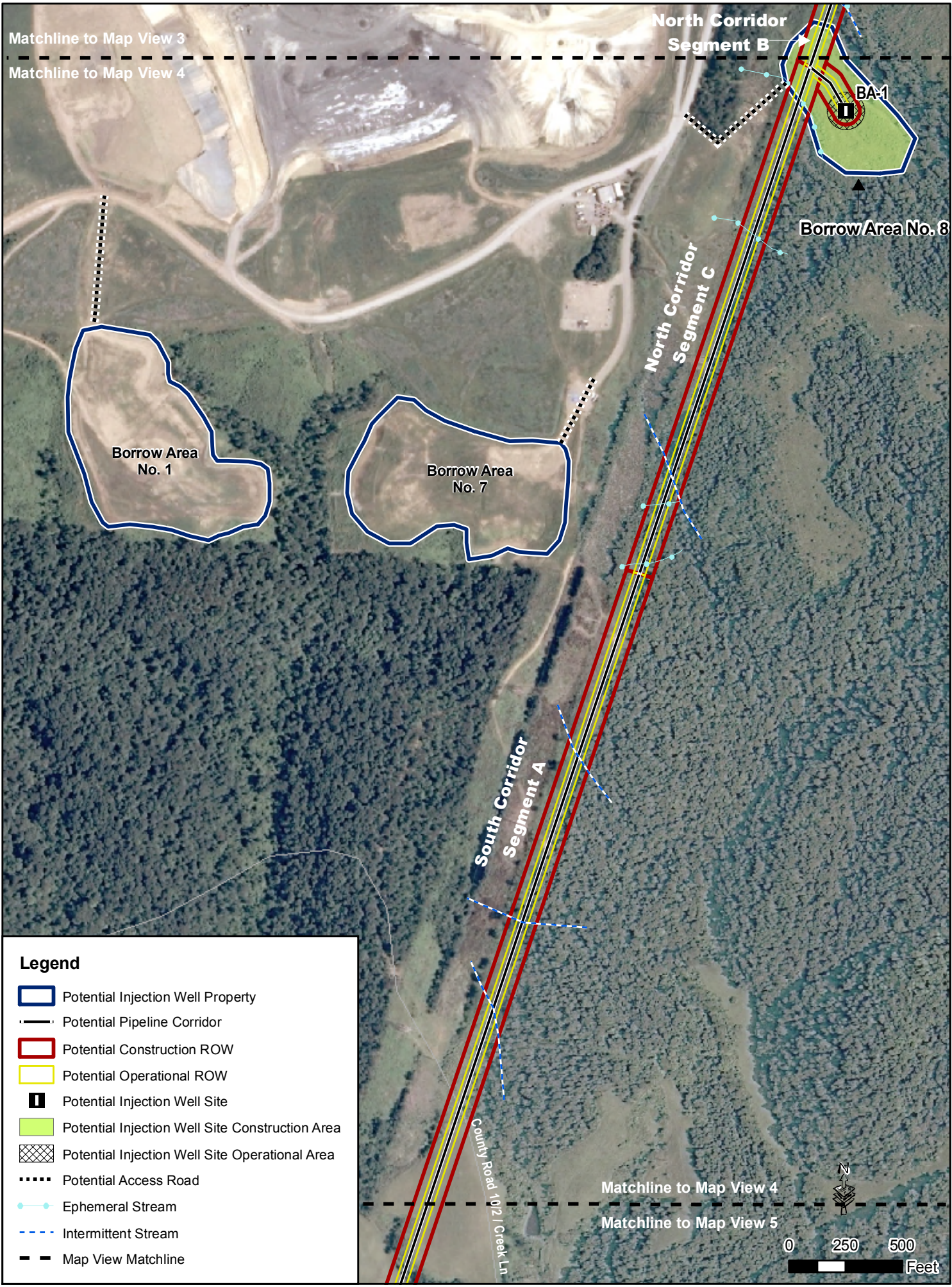
Borrow Area No. 8

BA-1

Matchline to Map View 3

Matchline to Map View 4





Matchline to Map View 3

Matchline to Map View 4

North Corridor Segment B

BA-1

Borrow Area No. 8

Borrow Area No. 1

Borrow Area No. 7

North Corridor Segment C

South Corridor Segment A

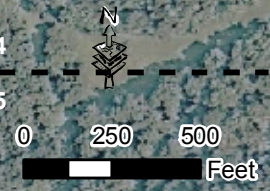
County Road 102 / Creek Ln

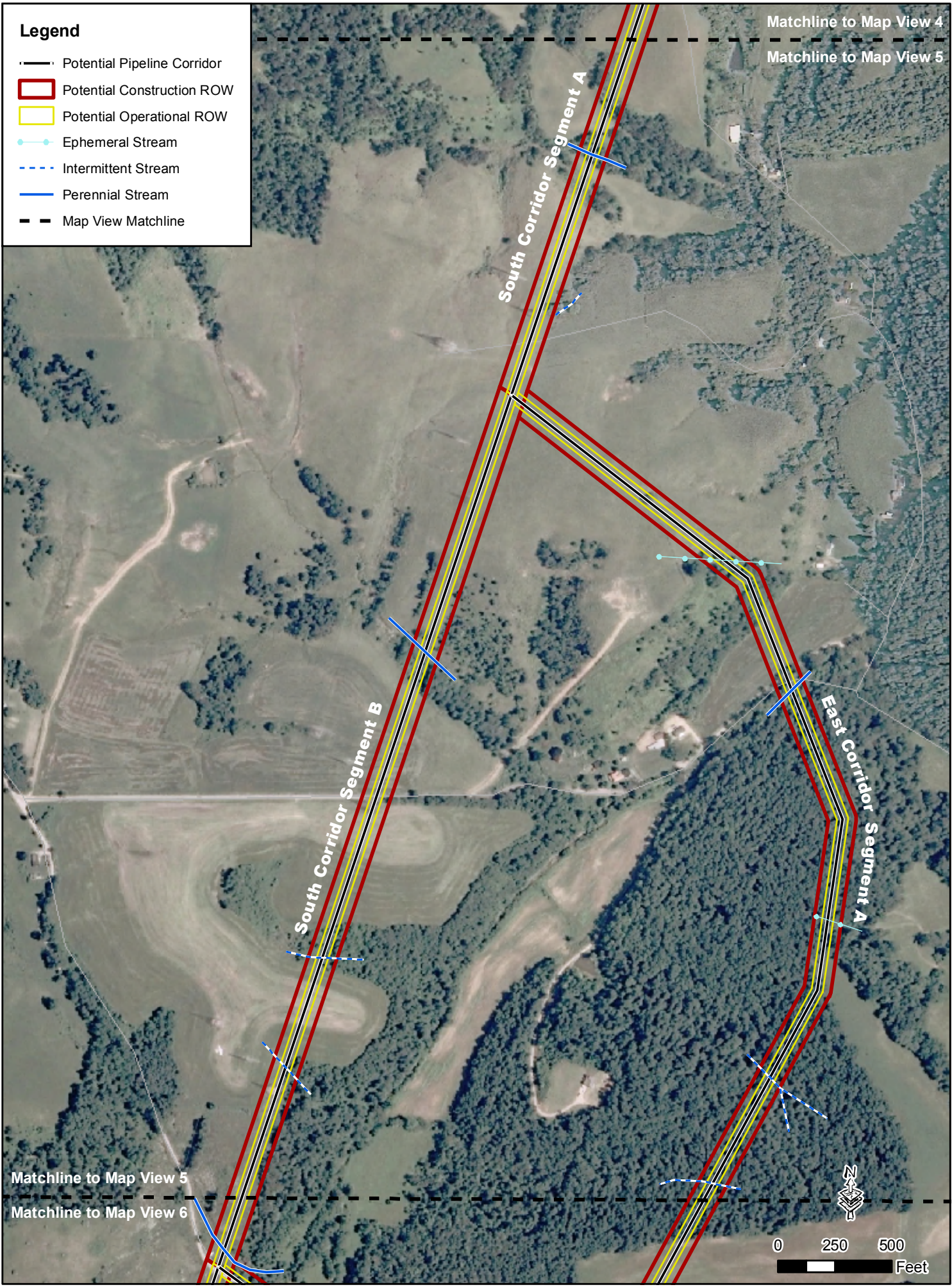
Matchline to Map View 4

Matchline to Map View 5

Legend

- Potential Injection Well Property
- Potential Pipeline Corridor
- Potential Construction ROW
- Potential Operational ROW
- I Potential Injection Well Site
- Potential Injection Well Site Construction Area
- Potential Injection Well Site Operational Area
- Potential Access Road
- Ephemeral Stream
- - - Intermittent Stream
- Map View Matchline





Legend

- Potential Pipeline Corridor
- Potential Construction ROW
- Potential Operational ROW
- Ephemeral Stream
- Intermittent Stream
- Perennial Stream
- Map View Matchline

Matchline to Map View 4

Matchline to Map View 5

South Corridor Segment A

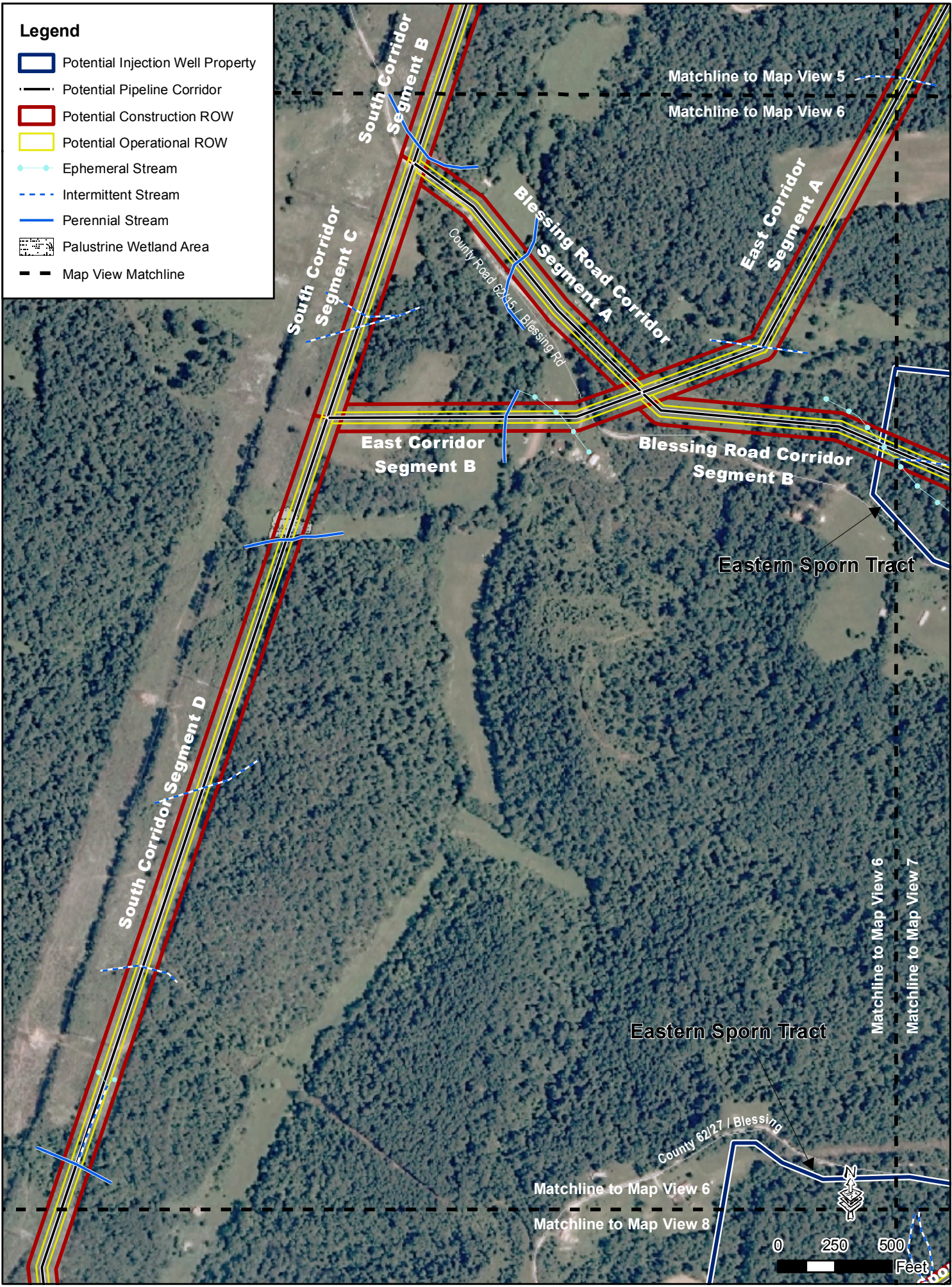
South Corridor Segment B

East Corridor Segment A

Matchline to Map View 5

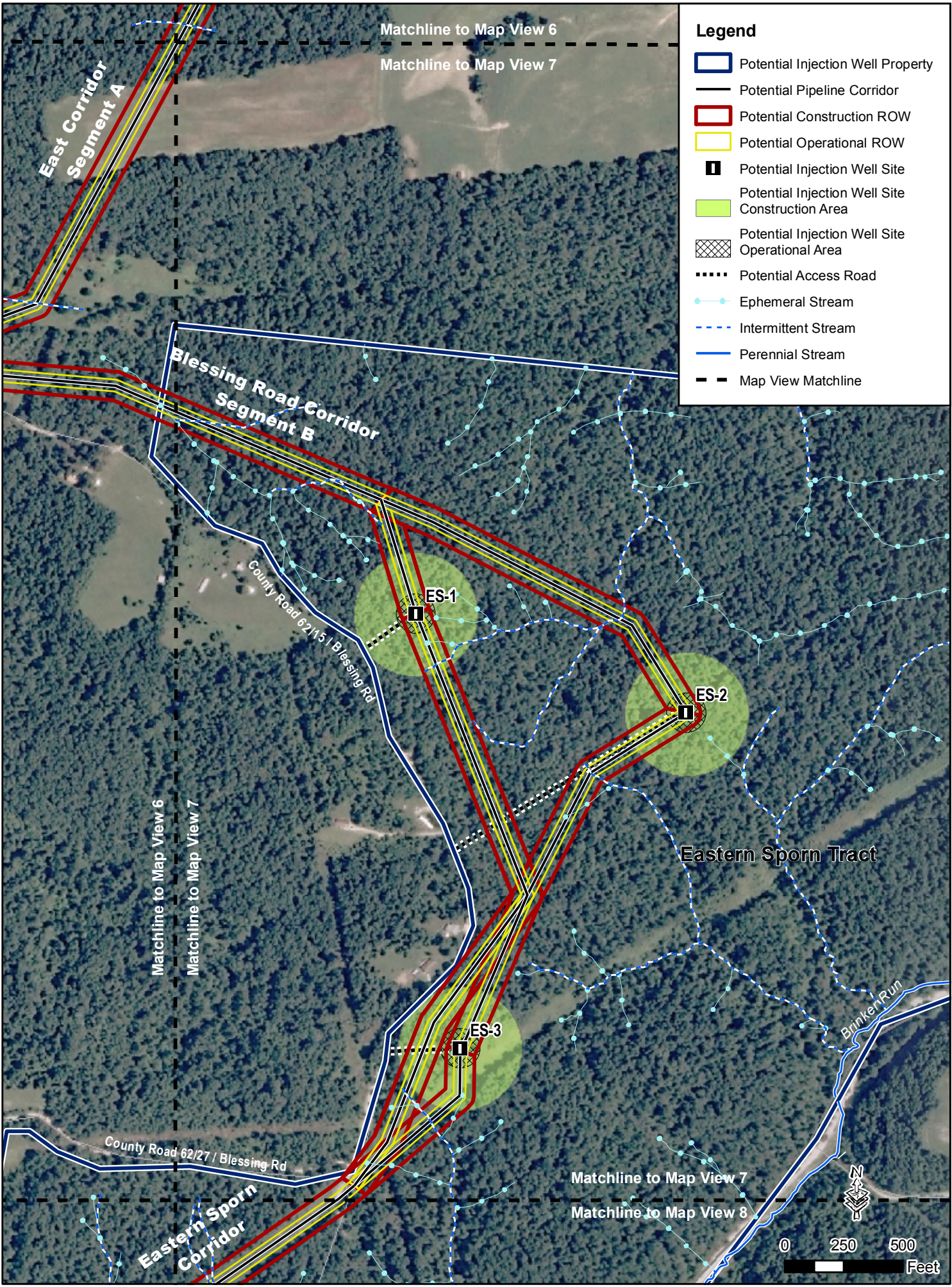
Matchline to Map View 6

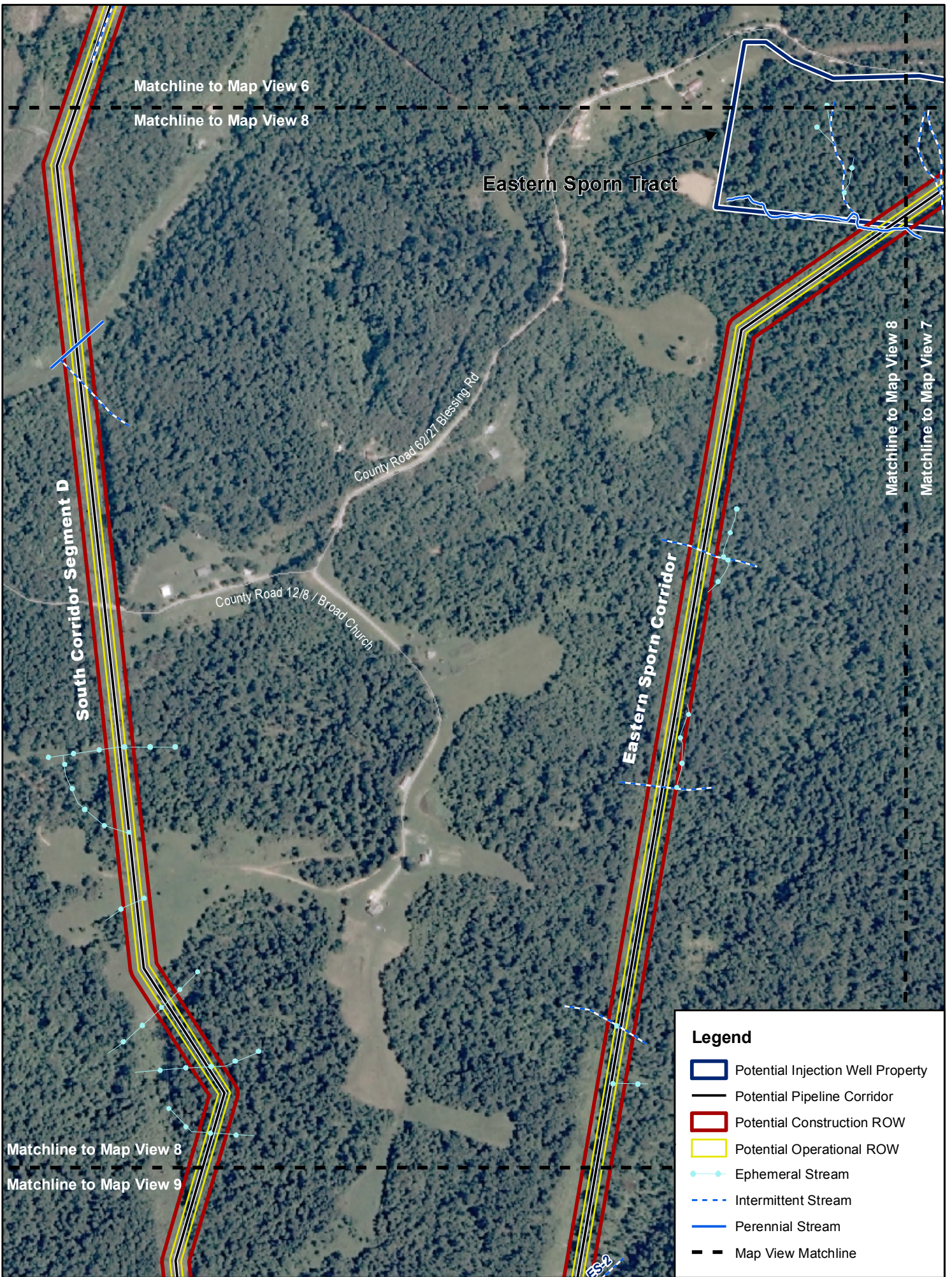
0 250 500 Feet



Legend

- Potential Injection Well Property
- Potential Pipeline Corridor
- Potential Construction ROW
- Potential Operational ROW
- Ephemeral Stream
- - - Intermittent Stream
- Perennial Stream
- Palustrine Wetland Area
- Map View Matchline





Matchline to Map View 6
 Matchline to Map View 8

Eastern Sporn Tract

County Road 62/27 Blessing Rd

County Road 12/8 / Broad Church









South Corridor Segment D

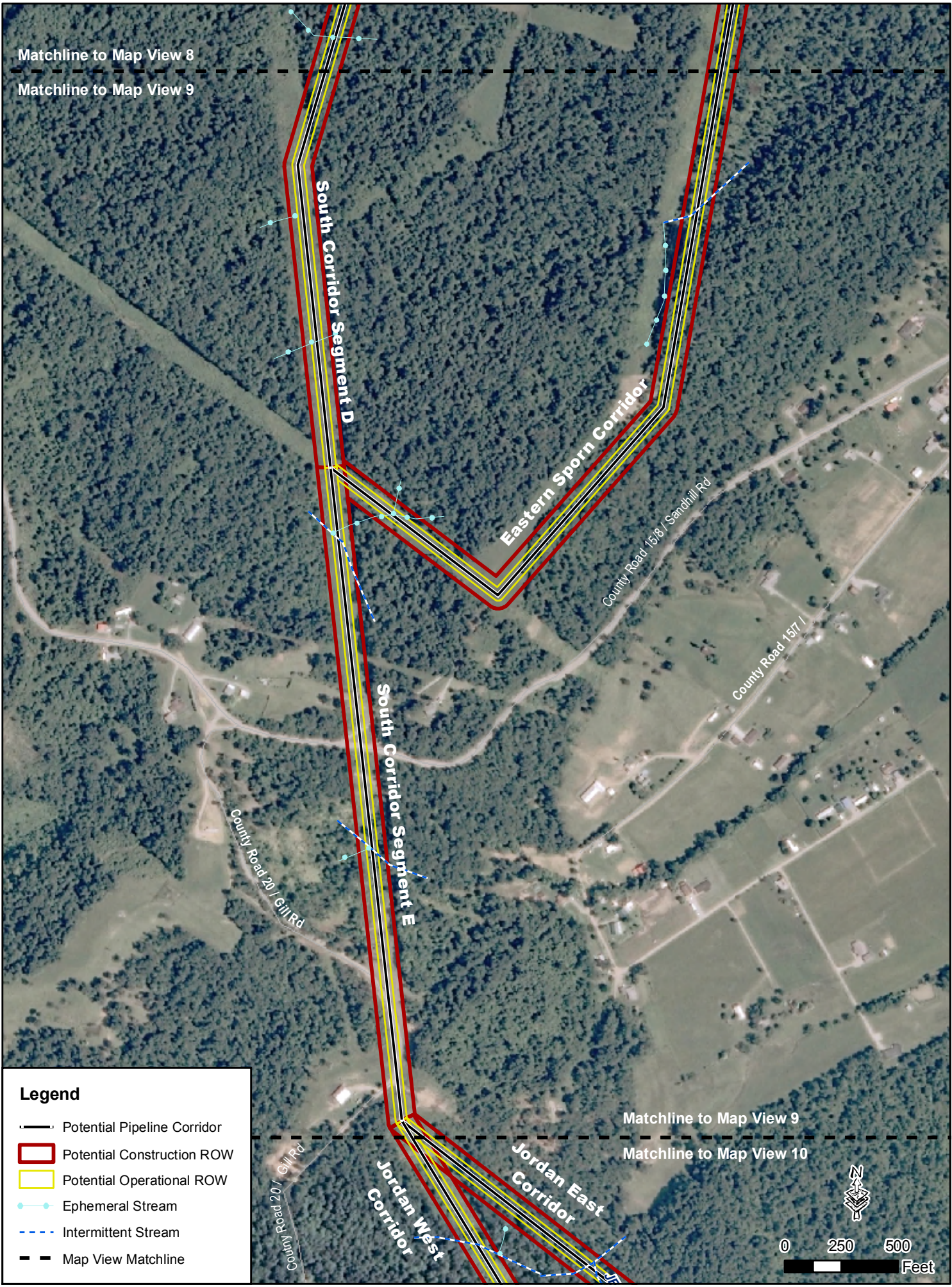
Eastern Sporn Corridor

Matchline to Map View 8
 Matchline to Map View 7

Matchline to Map View 8
 Matchline to Map View 9

Legend

-  Potential Injection Well Property
-  Potential Pipeline Corridor
-  Potential Construction ROW
-  Potential Operational ROW
-  Ephemeral Stream
-  Intermittent Stream
-  Perennial Stream
-  Map View Matchline



Matchline to Map View 8

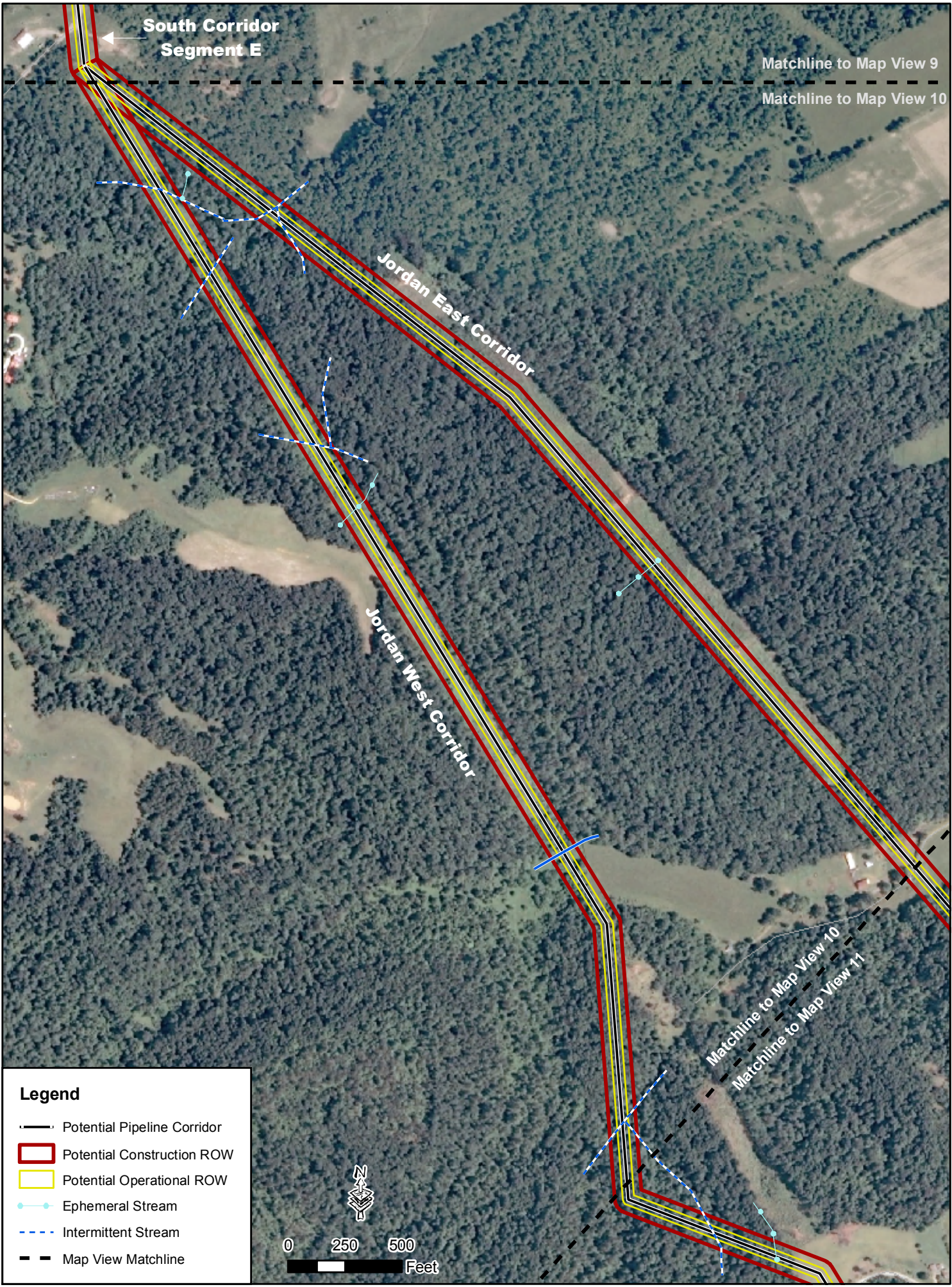
Matchline to Map View 9

Matchline to Map View 9

Matchline to Map View 10

Legend

- Potential Pipeline Corridor
- Potential Construction ROW
- Potential Operational ROW
- Ephemeral Stream
- Intermittent Stream
- Map View Matchline



South Corridor
Segment E

Matchline to Map View 9
Matchline to Map View 10

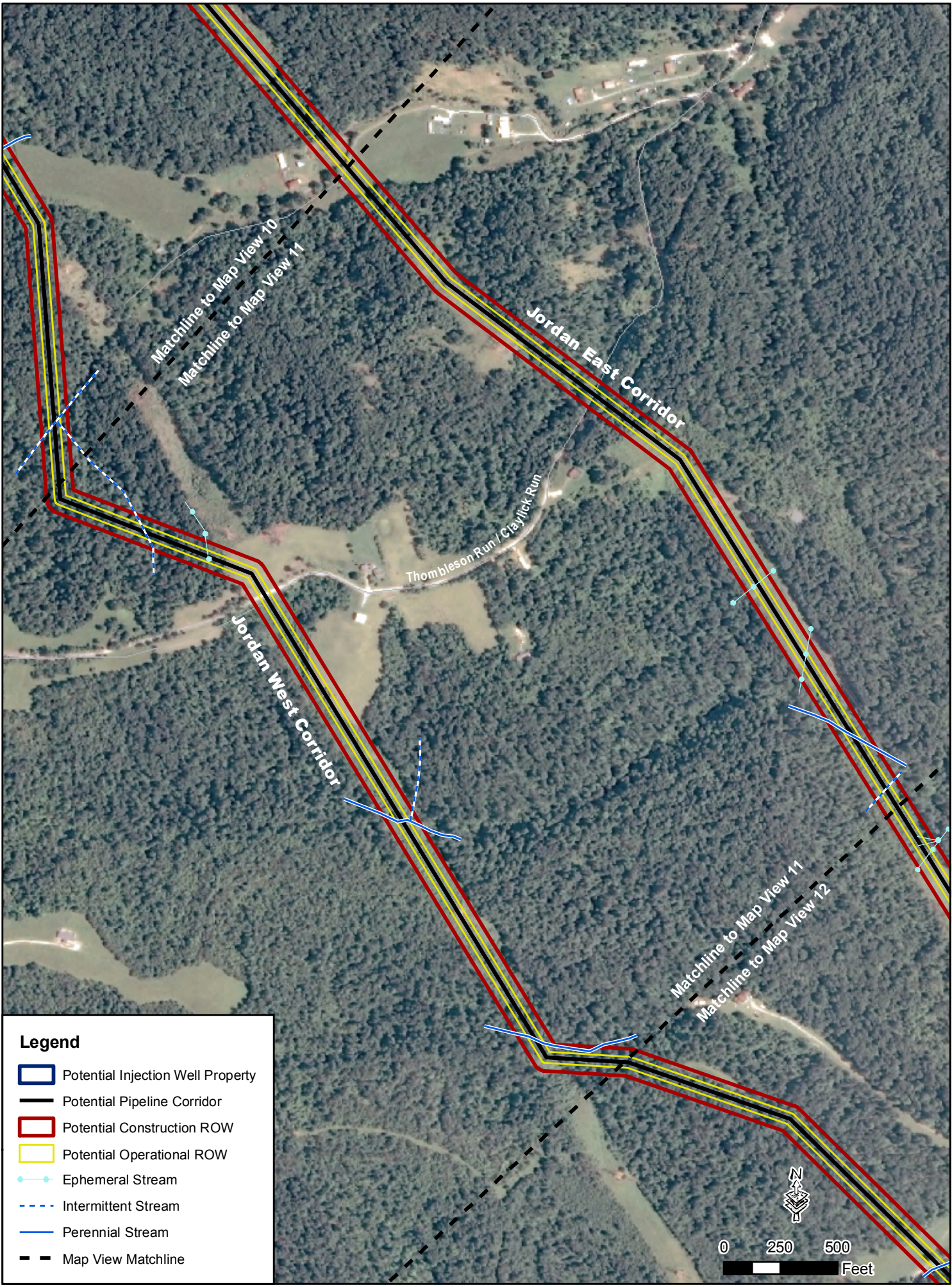
Jordan East Corridor

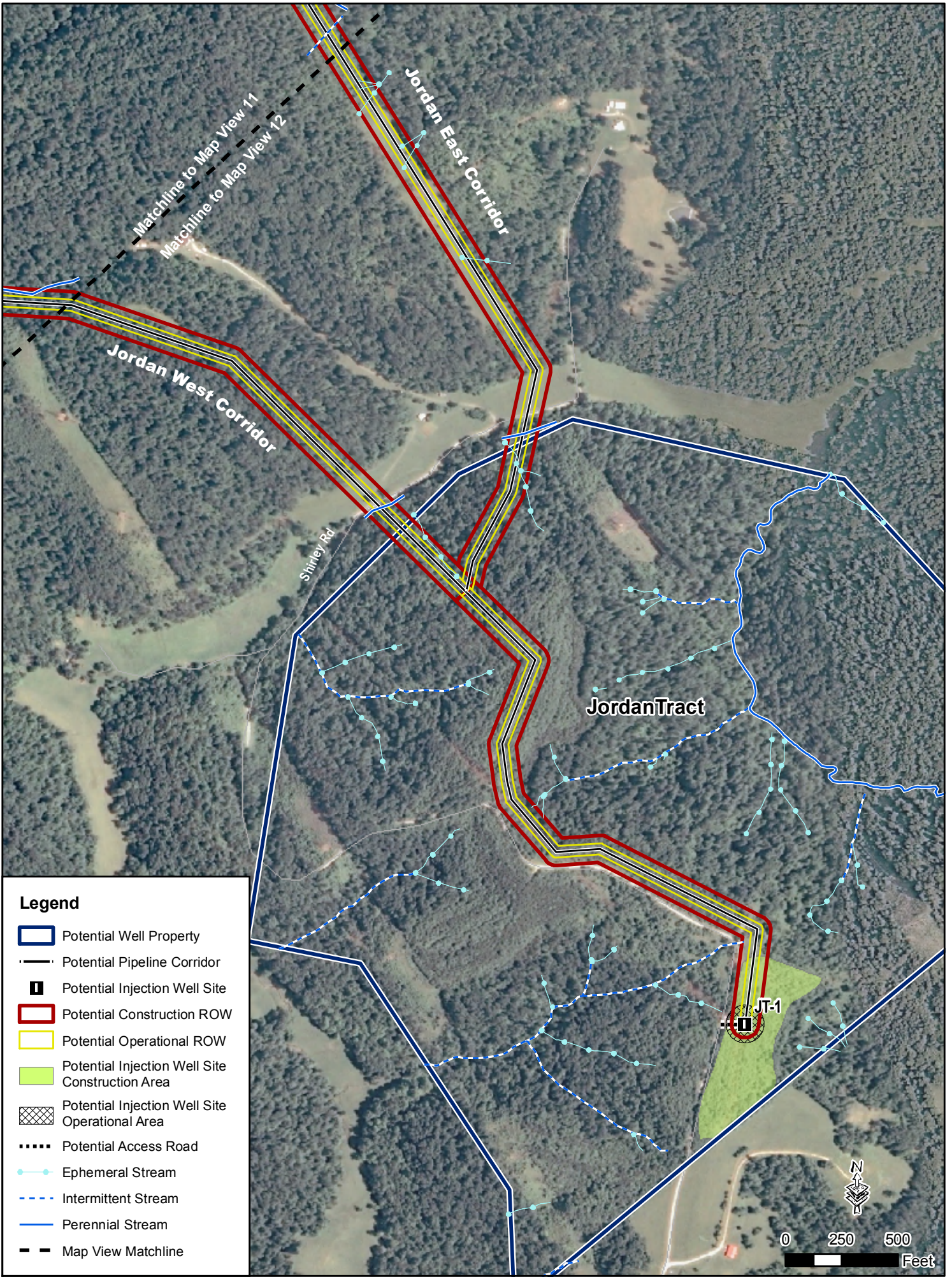
Jordan West Corridor

Matchline to Map View 10
Matchline to Map View 11

- Legend**
- Potential Pipeline Corridor
 - ▭ Potential Construction ROW
 - ▭ Potential Operational ROW
 - Ephemeral Stream
 - - - Intermittent Stream
 - - - Map View Matchline

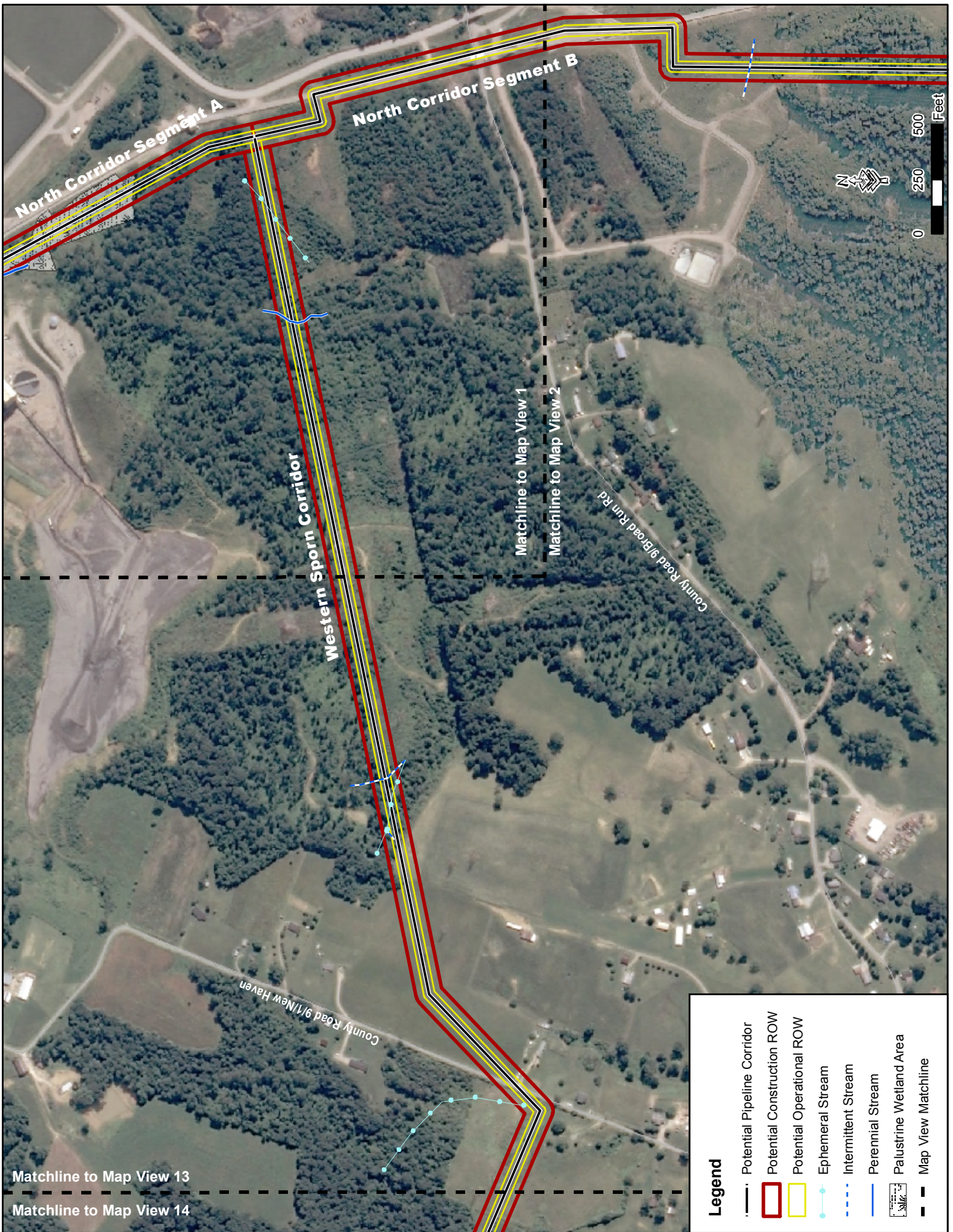


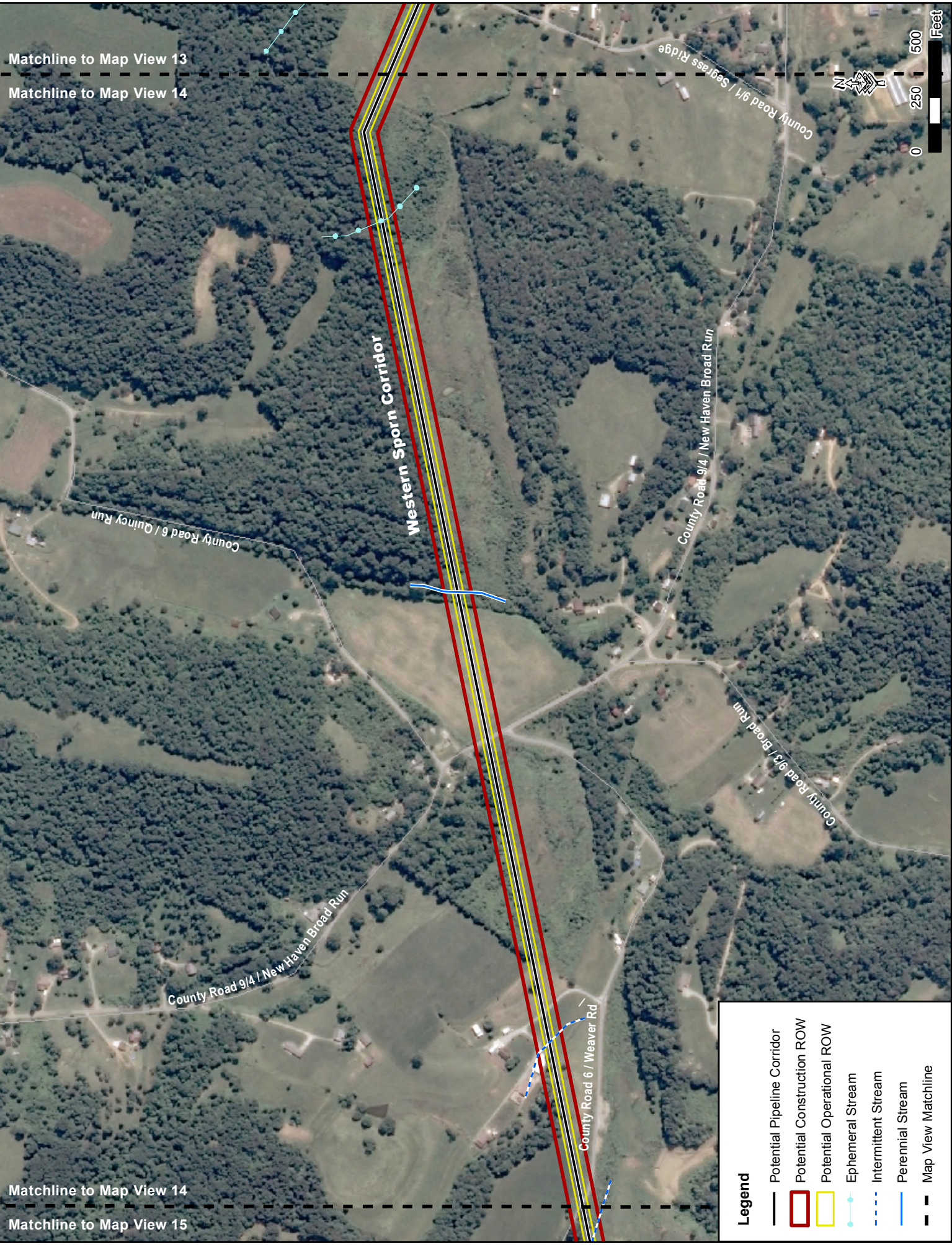




Legend

- Potential Well Property
- Potential Pipeline Corridor
- Potential Injection Well Site
- Potential Construction ROW
- Potential Operational ROW
- Potential Injection Well Site Construction Area
- Potential Injection Well Site Operational Area
- Potential Access Road
- Ephemeral Stream
- Intermittent Stream
- Perennial Stream
- Map View Matchline





Matchline to Map View 13

Matchline to Map View 14

Matchline to Map View 14

Matchline to Map View 15

Legend

- Potential Pipeline Corridor
- Potential Construction ROW
- Potential Operational ROW
- Ephemeral Stream
- Intermittent Stream
- Perennial Stream
- Map View Matchline



Matchline to Map View 14

Matchline to Map View 15

Matchline to Map View 15

Matchline to Map View 16

County Road 6 / Weaver Rd

County Road 6 / H Union Rd

County Road 6 / Broad Run

Western Sporn Corridor

County Road 3 / New Haven Sasarfas Rd

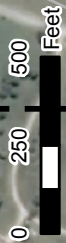
Legend

- Potential Pipeline Corridor
- Potential Construction ROW
- Potential Operational ROW
- Ephemeral Stream
- Intermittent Stream
- Map View Matchline



Matchline to Map View 15

Matchline to Map View 16



Matchline to Map View 16

Matchline to Map View 17

Western Sporn Corridor

Foglesong Corridor

County 3/3 / Dave Foglesong

Legend

- Potential Pipeline Corridor
- Potential Construction ROW
- Potential Operational ROW
- Ephemeral Stream
- Intermittent Stream
- Map View Matchline

